

The Dynamic Impact of Refugee Immigration on Native Workers *

Katia Gallegos Torres[†] Katrin Sommerfeld[‡]

Preliminary and incomplete. Please do not cite or circulate.

February 29, 2024

Abstract

We study the dynamic effects of predominantly low and medium-skilled immigration on native workers by leveraging the large refugee inflow from 2014 to 2016. Using individual-level administrative panel data on the German workforce and an instrumental variables approach, we find that a one pp. larger inflow of refugees to a district increases the probability of full-time employment by 0.6 pp. Fewer outflows of employment drive this employment effect. The timing of the positive employment effect suggests positive labor demand effects in the short-run—in occupations that supply services to the refugees—and positive labor supply effects in the medium-run—in manufacturing occupations. At the same time, we find null effects on wages and task components of the job.

Keywords: refugee migration, labor market outcomes, complementarities

JEL Codes: J15, J21, J31, J61

*We thank Albrecht Glitz, Martin Lange, Andreas Steinmayr, and Jan Stuhler for their comments on a previous version of this manuscript. Additionally, we thank Giovanni Peri, Lukas Delgado-Prieto, and seminar participants at the PSE Migration Summer School 2021, the Innsbruck-Munich Applied Micro Workshop 2021, the 15th RGS Doctoral Conference, the Spring Meeting of Young Economists 2022, the 6th Understanding Voluntary and Forced Migration Conference, the ESPE Conference 2022, the DFG Conference on the German Labor Market in Mannheim, the SOLE 2023, the Junior Workshop on the Economics of Migration 2023, the 2nd Workshop on Migration and Family Economics, the scientific board meeting of the “IMES” junior research group, and at internal seminars at ZEW and the University of Mannheim for helpful discussions and comments. Moreover, we thank the team of the Referat 61C at the Federal Office for Migration and Refugees (BAMF), who kindly provided us with data on the BAMF-branch offices and EASY-arrivals, for their patience and support with the data. Felix Winkelmayr provided excellent research assistance. We acknowledge financial support from the German Federal Ministry of Labor and Social Affairs through the Fördernetzwerk Interdisziplinäre Sozialpolitikforschung (FIS) under grant number FIS.00.00140.19. All errors are our own.

[†]ZEW Mannheim, IAB Nuremberg, and University of Innsbruck (katia.gallegos@zew.de)

[‡]ZEW Mannheim, Destatis, and IZA Bonn (katrin.sommerfeld@zew.de)

1 Introduction

How immigration affects native workers in the host country continues to be an unsettled debate in academics and policy. Apart from economic migration, there have recently been historically large episodes of refugee migration, i.e., in 2015–2016 from the Middle East and in 2022 from Ukraine. Due to climate change and ongoing political crises worldwide, forced migration is expected to grow (Becker and Ferrara, 2019). Moreover, Western countries rely on immigration to counteract labor shortages resulting from their aging workforce. Hence, the host society and the arriving refugees could benefit from each other in the domestic labor markets. It is thus crucial to examine the labor market effects of refugee immigration in host countries.

In this paper, we study how the 2014–2016 inflow of refugees to Germany affected the labor market outcomes of individual native workers over time. We focus on Germany, the largest receiving country in Europe in absolute terms. About 1.16 million individuals sought asylum for the first time in 2015 and 2016. In 2019, asylum-seekers and refugees together account for about 2% of the country’s population and 1% of all workers.¹ As such, this recent refugee migration episode to an OECD country is larger than others that have been studied before (Glitz, 2012; Foged and Peri, 2016).²

While there is abundant economic literature about the labor market effects of immigration on natives (e.g., Dustmann et al., 2016; Edo, 2019), less is known about the effects of recent refugee migration episodes in OECD countries. Refugees are different from other groups of migrants along several dimensions (Becker and Ferrara, 2019). On the one hand, refugees have different motives to migrate, higher insecurity, and less preparation for employment take-up abroad. Consequently, their economic and social integration follow on average slower trajectories than those of economic immigrants (Chin and Cortes, 2015; Brell et al., 2020; Brücker et al., 2020). Moreover, refugees are often subject to residency restrictions (Fasani et al., 2022) and employment bans (Fasani et al., 2021), all of which dampen their labor market impact on natives, at least in the short-run. On the other hand, the refugee arrivals to Germany induced additional regional labor demand (Auer and Götz, 2023; Berbée et al., 2022) and they occurred at a time of labor market tightness and skills shortages in certain occupations. Hence, it is *a priori* not clear what effect the refugees’ arrival has on incumbent natives and how effects evolve over time. To shed light on these questions, we analyze the dynamic effects of refugee migration. These help us to identify initial labor demand effects from later labor supply effects.

Our empirical strategy builds on a dispersal policy and an instrumental variable approach. In principle, asylum-seekers are obliged to stay in the region they have been assigned to for up to 36 months, otherwise losing their social benefits. Nonetheless, the allocation quotas of the dispersal policy were often not met during the peak of the refugee inflow (Berbée et al., 2022; Bredtmann, 2022; Brücker et al., 2020; Gallegos Torres, 2023; Gehrsitz and Ungerer, 2022). Furthermore, refugees are free to choose their place of residence after a maximum of 3 years or

¹From now on, we will speak of refugees subsuming all individuals who arrived as asylum-seekers, the majority of which have obtained a protection status in the meantime.

²Glitz (2012) studies the arrival of more than 700,000 ethnic Germans during 1996–2001, with an average inflow rate of 0.83%. One larger recent event is the Venezuelan exodus to Colombia, which currently represents almost 4% of the Colombian population (Delgado-Prieto, 2023). Other episodes of forced migration impacted only very local labor markets (Card, 1990; Borjas and Monras, 2017).

after finding employment subject to social security contributions of at least 15 hours per week. These issues raise concerns that the regional allocation of refugees is not exogenous but affected by endogenous regional sorting. We, therefore, build a novel instrument based on the observation that asylum seekers were often placed close to the responsible branch office of the Federal Office for Migration and Refugees (BAMF), which handles their asylum applications, and they often continue residing there.³ Most of these offices have existed since 1993; hence their location long precedes the 2014–2016 refugee arrivals. We use the distance from the centroid of a district to the closest responsible BAMF branch office to construct our distance instrument (in the spirit of a shift-share IV) in order to tackle endogenous regional sorting.

To shed light on different adjustment mechanisms, we study how individual-level employment, real daily wages, occupation and workplace changes, and job task components develop over time for different populations and occupation groups. In particular, the data allow us to go beyond aggregate regional effects and answer, instead, how the immigration shock affects employed vs. non-employed natives already in the labor market.

We use a long-differences approach with IV to causally estimate the effects of refugee arrivals from 2014–2016 on yearly labor market outcomes of native workers (similar to [Autor et al., 2014](#); [Yagan, 2019](#); [Delgado-Prieto, 2023](#)). To follow individuals over time (akin [Foged and Peri, 2016](#)), we use administrative individual-level panel data representing 2% of all German workers subject to social security contributions for the years 2011–2019 as contained in the Sample of Integrated labor Market Biographies (SIAB) provided by the Federal Employment Agency ([Frodermann et al., 2021](#)).

The results show that a 1 pp. higher inflow of refugees during 2014–2016 to a district led to a 0.6 pp. higher probability of being full-time employed for native individuals from 2015 onward. In the short-run, the employment gains are significant for commercial services and health and education workers, reflecting potential labor demand effects—while refugees are banned from employment and only slowly enter the labor force. In the medium run, these positive employment effects are only significant for manufacturing professions and commercial services— in line with a labor supply story, when refugees start to provide labor and complementarities arise. Importantly, refugees work predominantly in precisely these professions, thus suggesting important complementarities between refugees (in low-skilled jobs) and natives (in high-skilled jobs). The employment gains from refugee immigration are large and significant for females in the short run (2015) and males in the medium run (2018 and 2019), which reflect occupational segregation by gender ([Cortes and Pan, 2018](#)).

Our paper contributes to the important and contested economic literature on the impact of immigration on labor markets in several ways. First, we complement the literature studying labor market effects from immigration by focusing on refugee migration. We study the large 2014–2016 refugee immigration to Europe and its effect on Germany, as an example of a large OECD country. Existing papers have focused on the impact of Syrian refugee immigration in bordering countries. In Turkey, Syrian refugees led to a reduction in natives' informal employment while at the same time increasing natives' formal employment ([Tumen, 2016](#); [Aksu et al., 2022](#); [Ceritoglu et al., 2017](#); [Del Carpio and Wagner, 2015](#)). Similarly, in Jordan, natives living

³By 2020, only 54% of recognized refugees were still residing in their initial district of assignment ([Weber, 2022](#)).

in regions exposed to more Syrian refugees do not exhibit worse labor market outcomes than those less exposed (Fallah et al., 2019). For Germany, the empirical evidence is scant: using a difference-in-differences approach, Gehrsitz and Ungerer (2022) find no displacement effect on native workers during their observation period (2016–2017) but only on previous immigrants.⁴ Berbée et al. (2022) and Auer and Götz (2023) empirically show large and significant labor demand effects from refugee immigration, which are, however, short-lived. The former paper focus on refugees who are banned from working to isolate the pure labor demand effect. Nevertheless, both studies only use aggregate district-level data. Studies using individual-level worker data and estimating the causal effects from the 2014–2016 refugee arrivals on natives' labor market outcomes have been missing so far. We do both and hence, complement and expand the existing literature. In addition, we focus on the yearly dynamic of the effects, which suggests different labor demand and supply effects over time.

Second, the good economic conditions in the host country at the time of the immigration shock provide a setting to complement the literature. We analyze the medium-run effects of predominantly low- and medium-skilled immigrants on the resident workers in a country where unemployment has steadily decreased in recent years and is currently at 5.5%. Whether refugees would take away jobs has been largely emphasized in the public debate but needs more empirical evidence. Estimations show that Germany needs 260,000 immigrant workers annually to account for its loss in workforce (Fuchs et al., 2019). Hence, it is of high political importance to understand who gains and who loses from refugee immigration to optimize migration and labor market policies. Overall, our results show only winners, reflecting the economy's capacity to absorb additional labor supply. Using individual-level panel data, we provide evidence of two adjustment mechanisms: changes in the workplace and an increase in full-time work instead of part-time work (intensive margin). We complement our individual-level analysis with a regional analysis of commuter flows.

Third, we expand the scant literature on the effects of refugee immigration on individual labor market outcomes by developing a novel identification strategy. A major challenge in this literature is how to solve endogenous regional sorting. The literature has mainly relied on shift-share IV approaches⁵, shocks within particular skill-cell groups⁶, and natural experiments.⁷ Alternatively, dispersal policies provide a particularly well-suited setting to generate exogenous variation in the arrival of immigrants (Foged and Peri, 2016; Dustmann et al., 2019; Glitz, 2012). We identify exogenous variation in the refugee population shock by relying on a particular aspect of the refugee dispersal policy in Germany, i.e., the responsibility of the BAMF branch offices by country of origin. These responsibilities and locations can be considered as exogenous as we argue below.

In the following sections, we describe the theoretical considerations, the institutional background, the data we use, the empirical approach, and the preliminary results.

⁴This is mainly a mechanical effect given that refugees will be included in the foreigners "unemployment rates" 18 months after arrival (the latest).

⁵For area-based studies, see for example: Card (2009); Altonji and Card (1991); Cortes and Tessada (2011).

⁶For example: Aydemir and Borjas (2011); Borjas (2003); Monras (2020).

⁷Mainly using unexpected migration waves, e.g., from refugees. Borjas and Monras (2017) describe some historical forced migration episodes.

2 Theoretical Considerations

2.1 How Refugees are Different from Economic Migrants

Refugee migration differs from standard economically driven migration in several ways. Refugees generally do not flee for economic reasons, have little time for preparation (i.e. to invest in host country's specific human capital), have lower language skills, and bring fewer certificates. Additionally, institutional barriers—such as employment bans and residence restrictions—contribute to a slower integration of refugees into the host country's labor markets (Brell et al., 2020; Brücker et al., 2020; Brücker et al., 2020; Chin and Cortes, 2015; Dustmann et al., 2017; Edin et al., 2003).

However, there are a few reasons to expect a relatively better labor market integration for refugees than for other migrants. First, refugees have no incentives nor the option for return migration, which increases pressure to integrate in host countries. Similarly, the likelihood for staying permanently in the host country is higher for some refugees than for other migrants, translating into additional human capital investments (language courses, additional training, etc.) (e.g., Cortes, 2004; Chin and Cortes, 2015).

In addition, the asylum recognition process itself may have opposing effects on refugees' labor market integration. Brücker et al. (2020) show that a delay by 6 months in the asylum-process reduces the probability of employment by 11% while getting a positive asylum decision increases it by 30%. Hence, both the length and type of recognition matter for the labor market integration of refugees. During 2015–2016 the asylum-process were accelerated which resulted in having approx. 60% of all applications decided during the first six months, and above 90% within 12 months (BAMF, 2016; BAMF, 2017).⁸ Even a positive decision on the asylum application usually only grants temporary protection in Germany. There is a notion of temporariness that hinders labor market integration (Dustmann et al., 2017). This again differs from economic migrants who usually already have a work contract that helps them with their residence permit. Overall, refugees enter employment with a delay. However, various reasons may lead to a fast take-up of training and potential anticipation effects among natives.

2.2 Labor Demand Effects from Refugee Immigration

The effects from immigration in the host country are typically analyzed as a labor supply shock. However, immigrants might also induce labor demand effects. Labor demand increases upon refugee arrivals due to two factors, (i) public expenditure (more case workers are needed, workers in shelters, public administration and support programs, etc.) and (ii) consumer demand also increases (either via in-kind provision of services, or via consumption funded by the monthly cash-allowance). Hence, immigrants add to the consumer base (Borjas, 2013) and they consume a disproportionate share of their income in locally provided goods and services (Berbée et al., 2022). These labor demand effects will kick-in right away upon immigration, while labor supply effects are delayed as refugees may be subject to employment bans (Fasani

⁸The average duration for reaching a decision on asylum applications was 7.9 months in 2015 and 8.7 months in 2016 (BAMF, 2016; BAMF, 2017; Brenzel and Kosyakova, 2019). This is in contrast to the 11.3 months recorded in 2014.

et al., 2021) and enter the labor market slower than other migrants (Becker and Ferrara, 2019; Brell et al., 2020; Chin and Cortes, 2015; Verme and Schuettler, 2021). The labor supply effects will only take place once refugees have gained labor market access. Thus, from the dynamics of the labor market effects of refugee migration, we can distinguish labor demand effects (in the short-run) from labor supply effects (in the medium-run).

2.3 Labor Supply Effects from Refugee Immigration

We think of labor supply effects in a model of limited substitutability with two nationality groups (natives and refugees) and three education groups (Ottaviano and Peri, 2012; Peri, 2012; Card, 2009). While most refugees arriving in Germany were low-skilled, there was also a small but relevant group of high-skilled refugees. The latter group has been found to provide labor on average later than the former group, partly due to human capital investments, e.g., into language skills and recognition of certificates. However, they are also more likely to suffer from downgrading when taking up a job (Brücker et al., 2020). Therefore, we expect that in our analysis period (over four years after the refugee inflow), refugees enter the labor market mainly in low and medium-skilled jobs. This is confirmed by the official statistics (see Appendix A.2). Hence, native high-skilled workers, who are usually considered complementary to immigrants, are expected to benefit. Whether low and medium-skilled workers also benefit is less clear due to the interplay of substitution effects and complementarities.

A simplistic model of perfect substitutability between native and refugee employees predicts employment or wage losses for low and medium-skilled workers after the refugees' arrival on the labor market. However, in a model with limited substitutability between natives and refugees, this effect is most likely reversed such that low and medium-skilled natives benefit. Such an effect has been shown for low-skilled native workers in Denmark by Foged and Peri (2016) who find that refugees "push" natives into more demanding jobs, particularly in terms of complex communication tasks.

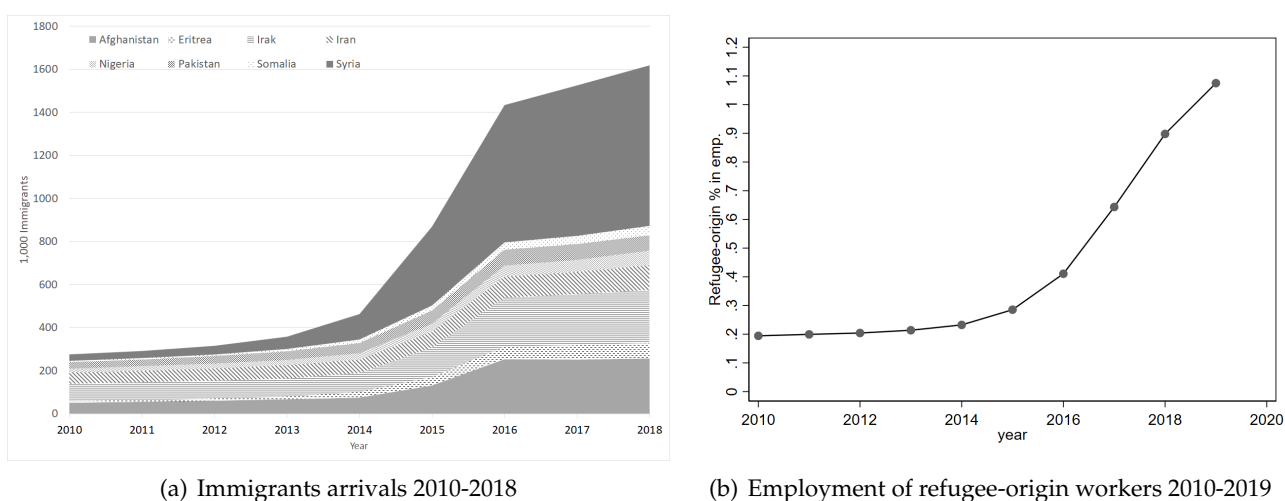
Thus, we expect to find positive labor market effects for high-skilled natives and zero or small positive effects for low and medium-skilled natives. Furthermore, refugees might fill vacant low-skilled jobs that cannot be filled by native workers, e.g., due to high reservation wages of the native population. Thus, they might not compete with each other but rather add to the overall employment. This could allow the (more productive) execution of high-skilled jobs that could not be performed before, if complementary (low or medium-skilled) workers were missing. Under this scenario, refugees would not exert negative labor market effects for either low or medium-skilled workers.

3 Background

3.1 Refugee Inflow and Dispersal Policy

The arrival of asylum-seekers to Germany had been increasing since 2014, peaking in late 2015. Germany alone received about half a million first-time asylum applications in 2015, representing 35.2% of all applications in the European Union (Eurostat, 2016). This strong influx ceased

Figure 1: Immigrants from the top 8 refugee-origin countries, stocks and employment shares



Notes: Figure (a) shows the yearly stocks of immigrants from the top 8 refugee origin countries in Germany: Afghanistan, Eritrea, Iran, Iraq, Pakistan, Somalia, and Syria for the years 2010–2018. Figure (b) shows the shares in total employment of the same countries until 2019. Source: Destatis (*Wanderungsstatistik*) and Federal Employment Agency. Own depiction.

in early 2016 when the European Union and Turkey came to an economic agreement for stopping irregular migrants from Turkey to the Greek Islands. Figure 1(a) shows the growth of the stock of immigrants from the top 8 refugee-origin countries in Germany during 2010–2018.⁹ The stock has been steadily increasing but there is a structural break in its growth-rate from 2014 onward. Arrivals were relatively steady until 2013. They more than doubled between 2013 and 2014 and quadrupled between 2014 and 2015. Since then, the arrivals have been rapidly decreasing. In the empirical analysis, we will measure the inflow of refugees between January 1, 2014, and December 31, 2016. However, due to the asylum process and initial employment restrictions, we do not see the share of refugee-origin workers in employment (see Figure 1(b)) increasing at the same time as the population arrivals, but only from 2016 onwards.

Asylum-seekers in Germany are entitled to receive asylum-seeking benefits from the moment they declare their willingness to apply for asylum (see Appendix A.1 for further details). They are allocated across German districts according to an administrative dispersal policy which proceeds, generally, in two steps.¹⁰ First, after arrival at the border, asylum-seekers are assigned to a federal state, taking into account population share and tax revenue of the states (based on the quotas from the “Königssteiner Schlüssel”). Within each state, asylum-seekers are assigned to an initial reception facility (IRF) in the districts (*Kreise*, NUTS-3, corresponding approximately to counties in the US), based on nationality, distance, and capacity of the IRFs. In a second step, refugees are assigned across districts to follow-up accommodations if their asylum claim is accepted or if they have good perspectives of being allowed to stay in Germany. Furthermore, in Germany, the initial allocation is binding as asylum-seekers are forced to reside in the IRF they have been assigned to for up to 18 months otherwise losing their en-

⁹The top 8 asylum-seeking countries, as defined per the Federal Employment Agency are: Afghanistan, Eritrea, Iraq, Iran, Nigeria, Pakistan, Somalia, and Syria.

¹⁰The states of Baden-Württemberg, Bavaria, and Schleswig-Holstein used a three-step process during these years. They first allocated refugees to the administrative districts (*Regierungsbezirke*) and then to the districts.

tlement to social benefits.¹¹ After a decision has been reached, they have to reside for up to three years in the state or in the district where their application was processed (*Wohnsitzauflage*).¹² Even after a positive decision, refugees get first a residence permit for only three years (under the Geneva Convention) or one year (subsidiary protection or national ban on forced return) with a possibility for extension for another three or two years, respectively. However, back in 2015, the authorities were trying to quickly free space for the new arrivals in the initial reception facilities; therefore sending the asylum-seekers to the follow-up accommodation even before a final decision on their application was made. As a result, many asylum-seekers waited for the final decision in the follow-up accommodation (Geis and Orth, 2016). After these 36 months, refugees are free to choose their place of residence. This is also possible if they find a job that meets certain minimum requirements. The within-state distribution quotas depend mainly on population with different details across federal states.¹³

Had the dispersal policy been implemented rigorously, we would see no variation in refugees' arrivals after normalization by population at baseline. However, Figure 2(a) shows substantial variation even within federal states. In addition to this, asylum seekers as well as recognized refugees have been found to live disproportionately in districts with higher unemployment (Brücker et al., 2020; Weber, 2022). This finding implies an endogenous allocation of newly arrived refugees to worse economic conditions which likely continues to correlate with ongoing labor market trends. Figure A.1 in the Appendix shows the standardised coefficients of a regression from our main explanatory variable (refugee arrivals between 2014–2016) and pre-treatment district level covariates. The only covariate that significantly correlates with these arrivals is the unemployment rate, corroborating the findings by Brücker et al. (2020).

The reasons for these (endogenous) deviations from the dispersal policy are likely (i) limited housing availability (Brücker et al., 2020), (ii) non-compliance on the side of refugees (e.g. moving on), and (iii) non-compliance on the side of districts (e.g. political lobbying).¹⁴ In addition to apparent endogeneity in the initial allocation, additional regional sorting may kick in once asylum seekers are allowed to move freely (36 months after arriving at the latest). By 2020, the majority of recognized refugees that arrived in Germany between 2015–2019 had stayed in their initial district (54%) (Weber, 2022).¹⁵ Those who moved did so predominantly to large cities (which also display high unemployment rates) and to districts in the North and West regions of Germany, displaying lower housing availability and higher average unemployment rates.¹⁶ Hence, not only were asylum-seekers often allocated to districts with higher

¹¹Asylum-seekers have to stay at in the first location of assignment (*Residenzpflicht*) until a decision on their application has been reached but for at least three months. This is usually the Initial Reception Facility.

¹²This does not apply to refugees whose decision was met before January 1, 2016. Other exceptions are granted in case the core-family lives in a different district, if starting a new training/studies, and if sufficient job has been found. Furthermore, four states in Germany do not have this residence requirement (Brandenburg, Bremen, Mecklenburg-Vorpommern, and Thuringia).

¹³These distribution systems are regulated under the laws of each federal state, so in practice, one can consider having sixteen different distribution and accommodation systems (Beinhorn et al., 2019). Berbée et al. (2022) provide details about the state-specific distribution quotas.

¹⁴Some cities lobbied for hosting more refugees than foreseen, such as Cottbus, Goslar, and Hettstedt, while others aimed at hosting fewer refugees, e.g. Göttingen. (Weblinks last retrieved 13.9.2022.)

¹⁵44% of recognized refugees have moved to another district than where they lived three months after arrival, and 18% have moved to another federal state (Weber, 2022).

¹⁶Additionally, Weber (2022) shows that districts in the fourth quartile of the unemployment distribution had a net immigration gain of 18% from refugees that moved. This is because refugees often move to large cities that also

unemployment, but even when they were allowed to move, they did so to districts with higher unemployment. Thus, in contrast to the standard economic migration literature, refugees regionally sort into regions with bad labor market conditions.

3.2 Labor market integration of asylum-seekers

Although it is clear that there was one sizeable one-time shock in arrivals (2014–2016), the employment take-up of refugee-origin workers takes some time to realize since they cannot immediately access the labor market (see Figure . Refugees are banned from work during their first three months after arrival in Germany. During this time, they cannot add to the labor supply but only to labor demand. However, actual employment take-up is much slower: One year after arriving in Germany, only 3% of refugees are employed (Brücker et al., 2020). Three years after arrival, their employment rate reaches 37%.¹⁷ Furthermore, given that individuals from some origin countries are more likely to remain in Germany, investments in human capital (i.e., language) might also differ by country of origin. As mentioned in Section 2.1, refugees are different than economic migrants and enter the labor market at a much slower pace.

In 2018, 44% of refugee-origin workers were employed in low-skilled jobs, 52% in medium-skilled and 5% in high-skilled jobs (Brücker et al., 2020).¹⁸ We provide more details on refugees' employment rates and skill-type of jobs in Section A.2 in the Appendix.

Table A.2 further describes the occupational groups in which refugees are working. 32.2% of working refugees have jobs related to "Transport, logistics, protection and security", and 27.6% perform jobs related to "Raw material extraction, production, manufacturing". These shares are much larger than among natives.¹⁹ In these occupations, we expect to see the largest labor supply effects from refugee immigration which could affect natives via complementarities or substitution effects.

3.3 Responsibilities of BAMF Branch Offices

The Federal Office for Migration and Refugees (BAMF) in Germany is responsible for processing the asylum applications. It has branch offices (*BAMF Außenstellen*) in every federal state which are linked to one or more initial reception facilities. These branch offices process the asylum applications, grant the resulting migration status and coordinate regional integration courses. Since 1993, the BAMF decentralized their operations and set up 48 branch offices across the federal states (BAMF, BAMF). Different branch offices specialize in the handling of applications from certain countries of origin, thereby trying to increase efficiency. These responsibilities by origin country are already taken into account in the first step of the allocation

exhibit high unemployment.

¹⁷Given the labor restrictions and language requirements, the labor market integration of the 2013–2016 arrivals was initially slower than that of the 1990–2013 refugee arrivals (Brücker et al., 2020). However, 3.5 years after arrival, the 2013–2016 cohort catches up to the previous cohort: about 45% of them have already started their first job (Brücker et al., 2020).

¹⁸These shares are very similar to the ones reported in Table A.1 in the Appendix with the exception that the share of workers performing medium-skilled jobs is somewhat smaller, and the share of those performing high skilled jobs larger in the data from the Federal Employment Agency than in the IAB-BAMF-SOEP survey.

¹⁹For Germans, the largest occupational group is "Company organization, accounting, law, administration" (22%) followed by "Raw material extraction, production, manufacturing" (21%). Only 11.6% of employed Germans work in jobs related to "Transport, logistics, protection and security".

process (EASY-System at the border). During the peak of refugee arrivals in late 2015, authorities tried to take into account the proximity to the responsible BAMF branch office when allocating refugees across districts (second step).²⁰ Moreover, refugees often continue residing in the vicinity of the initial reception facilities throughout and even after the asylum application process. As a consequence, asylum-seekers are clustered by origin countries around certain districts (see Figure A.2 in the Appendix).

Since 2016, all federal states are responsible for processing applications of all top 10 asylum-seeking countries of origin, as defined by the BAMF.²¹ For states with more than one BAMF branch office processing the same nationality, there is within-state variation regarding which branch office is closest by. In addition, there is within-state variation regarding which nationality is processed—and thus clustered—where. Based on these observations and anecdotal evidence, we will use the distance to the closest responsible BAMF branch office to instrument refugees' arrivals by nationality.

Figure 2 shows the dispersal of refugees across the country and its correlation with the location of BAMF branch offices. Figure 2(a) shows newly arrived asylum seekers from the top 8 sending countries (having arrived between January 1, 2014 and December 31, 2016)²² as a share of the 2011 population in each district. This will be the main explanatory variable, subject to endogeneity concerns (as outlined above). The white diamonds show the location of the BAMF branch offices that were responsible for the top 8 nationalities in 2016. In addition, Figure A.2 in Appendix A shows the corresponding maps for the individual nationalities. All eight maps show a certain degree of spatial correlation between the responsible BAMF branch office and the share of migrants from the corresponding home country.

We will use the distance from a district's centroid to the closest BAMF branch office to build a distance IV, which we describe in detail in Section 5.2). Figure 2(b) shows the predicted arrivals from the distance IV which gives more weight to closer responsible BAMF branch offices (by nationality, see section 5.2). Visual inspection suggests a substantial spatial correlation, that will later be supported empirically. Our reasoning behind the visual correlation between both maps in Figure 2 is that many asylum-seekers stay close to the original BAMF branch office to which they were initially assigned.

3.4 The German Labor Market Situation

The German labor market has performed well between 2011 and 2019 (our period of analysis). The unemployment rate decreased by 30% between these years. By 2019, the unemployment rate was at a historical minimum since 1991: only 5.5%. This steady decrease in unemployment was accompanied by a 7% increase in the number of employed individuals within the same period, with 38.2 million employed individuals in 2011 and 41 million in 2019.

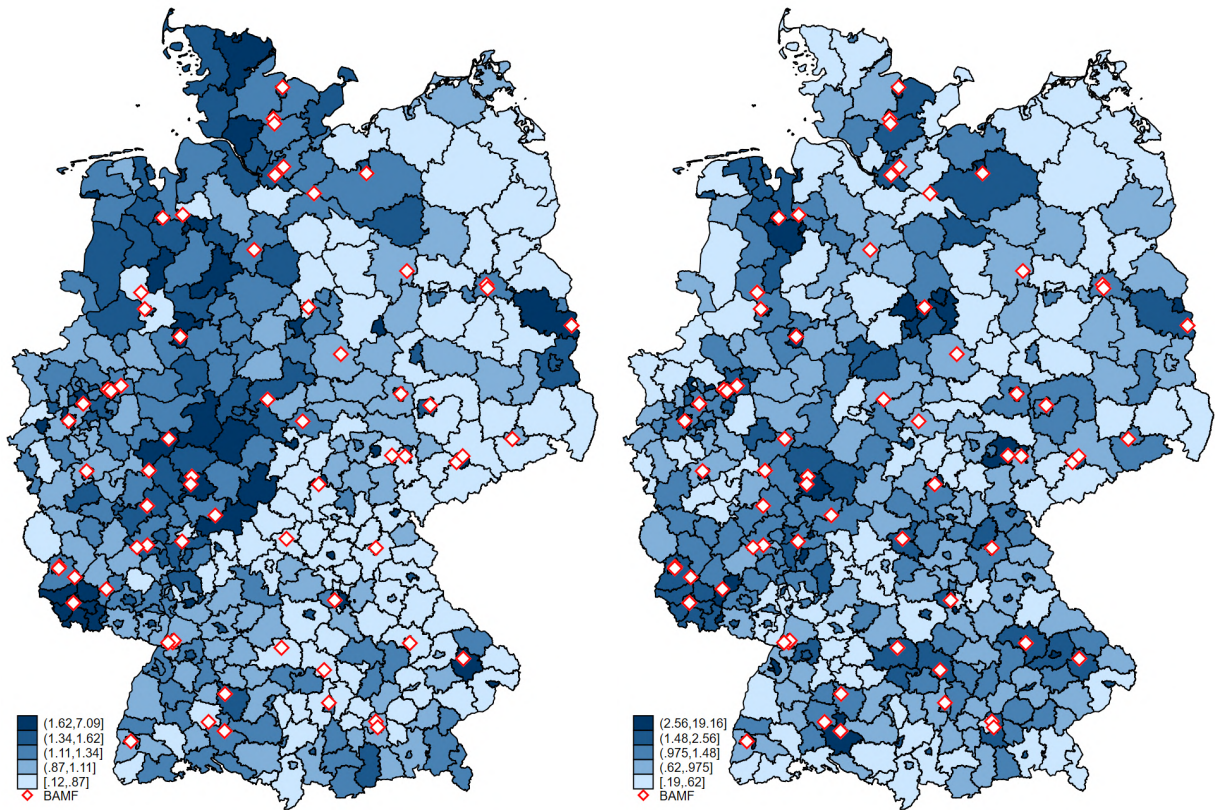
Meanwhile, reported vacant jobs increased by 66% from 466,288 in 2011 to 774,345 in 2019. This positive development is the result of a combination of labor market reforms introduced in

²⁰This was confirmed by interviews with stakeholders from the responsible authorities in some federal states.

²¹In response to the large inflow of 2015/16, the BAMF opened several new branch offices. This was often implemented as an enlargement of the already existing branch office.

²²See Section 4 for further details. The top 8 sending countries, referred to the ones defined by the employment agency.

Figure 2: Top 8 refugee-origin countries: arrivals per population and BAMF branch offices



(a) Refugee arrivals 2014–2016 (% of pop.)

(b) Distance IV

Notes: Figure (a) shows the arrivals of asylum-seekers from the top 8 refugee-origin countries as % of the population in a district (fixed in 2011). Figure (b) shows the regional variation of our instrument (using distance to BAME, Section 5.2). The white diamonds represent the BAMF branch offices. Source: Destatis and BAMF. Own graph.

the early and mid 2000s (“Hartz reforms”), a large decline in unemployment in East Germany (due to demographic reasons), the role of the dual apprenticeship system, changes in the retirement age, the introduction of more flexible employment forms such as temporary agency work (Schneider et al., 2019), as well as a process of decentralization within the otherwise rather rigid system of collective wage bargaining (Dustmann et al., 2014). Hence, the arrivals of refugees coincided with a particular good time for the German economy and a situation of labor shortages.

4 Data

We follow individuals over time by using the Sample of Integrated Labor Market Biographies 1975–2019 (SIAB 7519) from the Research Data Centre (FDZ) from the Federal Employment Agency (*Bundesagentur für Arbeit*) (Frodermann et al., 2021). This is a 2% random sample drawn from the Integrated Employment Biographies (IEB) that contains all workers subject to social security contributions in Germany.²³

²³As of 2019, 74% of all workers in Germany were subject to social security contributions (Destatis, 2021b). Access to these data is only possible at the premises of the Research Data Centre or via a remote platform (JoSuA).

We analyze the period 2011–2019, using 2013 as the base year. We restrict the sample to individuals aged 20 to 64 who appear in the SIAB in 2013. To have a balanced panel, we fill their missing observations (for the years before or after 2013) with a zero in our employment outcomes unless they died. Furthermore, we calculate all the outcomes as of June 30 of each year.²⁴ As outcomes, we consider a dummy for full-time employment, real daily wages and their growth rates (in 2015 €), the main task type for each job (Dengler et al., 2014), and changes in occupation (at the 3-digit level), place of work, and place of residence. The main task type classification measures the share of the usual five different task groups (analytical non-routine tasks, interactive non-routine tasks, cognitive routine tasks, manual routine tasks, and manual non-routine tasks) in each 3-digit occupations as obtained from the BERUFENET Expert database (2013) (Dengler et al., 2014).²⁵

A limitation of the data, is that it is not possible to identify German-born individuals, but only German citizens. Similar to D’Amuri et al. (2010) we define as “native”, German workers who have never changed their nationality in all the years for which we have data.

Overall the sample is quite balanced, 54.98% of observations appear during all nine years of observation, and 76.87% appear during seven years or more. Our final sample consist of 477,487 German nationals. Furthermore, 86.89% of the sample are original observations, and 13.11% are filled gaps.

Table A.3 shows summary statistics of the outcome and control variables used for the empirical analysis for native workers. On average, the native workers in our sample are 42 years old, have 14 years of experience and 7.4 years in the current job. Most of them are medium skilled (74%) and only a small fraction (8%) are low-skilled. On average, the overall employment rate (excluding trainees) in our sample was 80% in the pre-treatment period (2011–2013). However, only 61% were full-time employed. By skill levels, only 25% of the low-skilled workers were full-time employed (36% had any employment); 63% of the medium-skilled and 70% of the high-skilled were full-time employed (84% and 88% respectively had any employment). The average pre-treatment daily wage was 123 €. This wage was almost 1.5 times larger for a high than for a low skilled individual (or 101 € more); the wage from a medium-skilled worker was 21% larger than the one for a low skilled worker. Post-treatment the average wage for all workers was 15% larger than the pre-treatment average (or 18.61 € more). Post-treatment the average wage of a high-skilled worker is only 97% larger than the one from a low-skilled worker, and the one from a medium-skilled worker is 10% larger. On average, 22% of the tasks from low-skilled workers are manual routine and another 30% are manual non-routine. For medium-skilled workers the main task component of their jobs is cognitive routine (31%) and for high-skilled workers it is analytical non-routine (42.2%).

For the immigration shock, we use customized data extracts from the Central Registry of Foreigners (AZR), administered by the BAMF (BAMF, 2019). We have district-level half-yearly data on asylum-seekers by month of arrival from 2013–2017.²⁶ More specifically, the data give

²⁴This is a standard procedure when using the SIAB, since wages are only reported on June 30 every year (Dauth and Eppelsheimer, 2020).

²⁵The BERUFENET Expert database relies on expert knowledge about the tasks performed in nearly all jobs performed in Germany. It is similar to the Occupational Information Network (O*NET) (Dengler et al., 2014).

²⁶This is the same data used by Berbée et al. (2022).

us for a particular cutoff date (June or December each year) how many refugees are registered in a district at this cutoff date, who arrived up to 18 months before to Germany, which is disaggregated by month of arrival. As the best measure for the inflow, we take the arrivals from the top 8 refugee-origin countries between January 2014 and December 2016 (normalized by the district’s population in 2011). We measure inflows of refugees rather than differences in stocks for two reasons (Lange and Sommerfeld, 2022): (i) The political debate centers around newly arrived refugees. (ii) This group is more homogeneous than what would be measured by net differences of stocks. This is because measuring differences in stocks on the district level would include refugees who have been in the country for a long time and are, therefore, free to move across districts (entailing a high risk of endogenous regional sorting). Figure 2(a) shows the regional distribution of the refugee inflow. Importantly, all districts have been treated, yet to a different degree.

The BAMF provided us with the monthly allocations by nationalities from the EASY algorithm to the initial reception facilities in the federal states from 2011–2018. We use these data for robustness checks. Furthermore—and more important for our instrument—they provided us with the lists of branch-offices and the countries they were responsible for during 2013–2018 (BAMF, 2020).

5 Empirical Approach

5.1 Empirical Specification

We aim at estimating the causal effect of the refugee immigration shock between 2014 and 2016 on individual workers in the host country in terms of labor market outcomes.

We model the one-time immigration shock as time-invariant, focusing on the dynamics of the resulting effect.²⁷ For this, we run separate regressions for the years 2011–2019 where we take long-differences of varying length, similar to Autor et al. (2014) and Yagan (2019), as follows:

$$\Delta y_{idt} \equiv y_{idt} - (1/3) \sum_{j=2011}^{2013} y_{idj} = \beta_0 + \beta_1 S_{d,1416} + \beta_2 Urban + \phi_{g(i,2013)} + \epsilon_{idt} \quad (1)$$

The left-hand side indicates the difference in outcomes of domestic worker i in district d between the current year t and the pre-treatment average value: $y_{idt} - (1/3) \sum_{j=2011}^{2013} y_{idj}$. Taking the differences with respect to pre-treatment averages instead of using only one baseline year smoothes pre-treatment variation in individual outcome levels (Autor et al., 2014; Yagan, 2019). Furthermore, it is a way of controlling for individual-level time invariant unobservable characteristics. Our variable of interest is $S_{d,1416}$: the arrivals of asylum-seekers between 2014–2016 in district d ($A_{d,1416}$) as a share of the district population in 2011: $S_{d,1416} = A_{d,1416}/pop_{d,2011}$.²⁸ We

²⁷Similar to Dustmann et al. (2017), because of the sharp increase in arrivals, we are not confronted by dynamic responses to past migration shocks (Jaeger et al., 2018).

²⁸As mentioned in Section 4, we measure arrivals to a district within the past 18 months at two points in time, June 30, 2015 and December 31, 2016. Hence, our main explanatory variable is the sum of those two arrival groups.

merge this shock to the district of residence of native workers in 2013. The fixed-effect $\phi_{g(i,2013)}$ is an interaction of 9 age-groups, 10 wage-deciles, and 88 industries (2-digit level) fixed-effects. All of these covariates are fixed pre-treatment (in 2013). The remaining variation to identify the effect from the refugee inflow stems from variations within groups of individuals with the same age group, wage decile, and industry and controlling for individual pre-treatment outcome levels, so as to net out individual heterogeneity. Put differently, we measure the average effect of living in a district with more vs. fewer refugee arrivals within 7,920 groups of workers defined by their age group, wage decile and industry, i.e. workers with similar observable characteristics who are employed in different districts. Controlling for pre-treatment selection is important, as some districts might be more populated by particular types of workers if, for example, a particular industry is strong there. These workers could be prone to different types of shocks other than refugee immigration but such effects will be controlled for by our approach.

Hence, the dynamics of the effect will be given by the β_t coefficients from the yearly regressions. The main explanatory variable, $S_{d,1416}$, remains constant over time, i.e. the samples and explanatory variable are fixed across the yearly regressions and only the outcome (full-time employment, wages and job task content) varies for every year.

Depending on the outcome under study, the sample consists of a panel of different groups of the labor force which follow throughout 2011–2019:

- (i) When analyzing employment outcomes, the sample consists of a balanced panel of the labor force (employed and unemployed workers in 2013, filling in zero values for gap years; see Section 4).
- (ii) When analyzing wages, we restrict the sample to an unbalanced panel of workers that have been full-time employed in 2013 and any other year throughout 2011–2019 (i.e., being full-time employed in any pair of post-treatment years, including the baseline).
- (iii) When analyzing job task contents, we use an unbalanced sample of all employed workers (any employment) in 2013 and any other year throughout 2011–2019 (i.e., being employed in any pair of years, including the baseline).

When analyzing effect heterogeneities, e.g. by sex or age group, we split the sample by individual characteristics.

5.2 Identification and instrument

Although asylum seekers are distributed regionally by a dispersal policy, the explanatory variable can be endogenous with respect to local labor market trends because, first, asylum seekers are apparently allocated disproportionately into districts with relatively high unemployment rates (potentially due to available housing, non-compliance or political lobbying, as explained in Subsection 3.1). Second, after a maximum of 36 months after arrival, refugees may move freely, which may introduce regional sorting. Moreover, they are free to move whenever they have found a job. From the migration literature, we would expect them to move to economically better-performing regions, hence biasing OLS estimates upwards. However, this is not

the case in the German context: even when refugees are allowed to move, they do so to high-unemployment districts (predominantly large cities, see Subsection 3.1). Therefore, OLS estimates might be downward biased (if refugees' location is correlated with worse economic conditions). Third, during the peak of arrivals, registrations were delayed, which led to under-reporting in 2015. Although we try to circumvent this problem, if measurement error is still in our AZR data, this will lead to an attenuation bias in the OLS estimates. We propose the following instrument to address the endogeneity of the treatment variable.

Distance IV (DIV)

In order to measure the exogenous part of the administrative allocation of asylum seekers across districts, we make use of the fact that asylum seekers are allocated close to a BAMF branch office responsible for the specific country of origin and often continue residing there. Hence, the closer a BAMF branch office, the more asylum seekers from that origin country are expected.

This instrument resembles a shift-share IV in spirit. We use the arrivals during 2014–2016 at the state level as the shift and the distances from the centroid of a district to the closest BAMF branch office as the share. The shift is given by the arrivals of asylum-seekers from each nationality (country c) that arrived in a particular federal state (s) during 2014–2016 to Germany ($A_{c,s}^{1416}$). As exogenous shares, we use the travel distance from the centroid of a district to the closest BAMF branch office responsible for a particular country of origin ($T_{c,d}$).²⁹ We normalize these distances within each state (so that they add up to one) and use them as weights to spread out the arrivals of asylum-seekers within state across districts.³⁰ Finally, we add up across nationalities and normalize this with the 2011 district's population, P_d^{2011} .

$$DistanceIV_d^{1416} = \sum_{c \in Refugee} \underbrace{A_{c,s}^{1416}}_{shift} \times \underbrace{NormTravel_{d,c}^{2016}}_{share} \times \frac{1}{P_d^{2011}} \quad (2)$$

One concern with this distance instrument could be that BAMF branch offices could potentially have been installed where there was a sufficiently large migrant community in the first place (e.g., to facilitate a sufficient supply of translators, etc.). If this were the case, our instrument would resemble a standard past settlement IV. To address this concern, Figure A.5 shows the regional distribution of a past settlement instrument (based on past migrant communities, subsuming all top 8 origin countries in 2011) together with the location of BAMF branch offices. It shows no discernible regional correlation. On average, the population of the top 8 refugee-origin countries in the German districts in 2011 was 0.26%. We further regress the location of branch offices per responsible nationality on the share of the migrant community from that specific nationality (see Table A.4). This exercise shows only a significant correlation for Afghans. This might be the reflection of a notable Afghani diaspora in Germany, it represents the largest Afghan community in Europe, yet still small in absolute terms.³¹ Yet overall,

²⁹Our distance IV bears some resemblance with those used recently in the migration/refugee literature, e.g. Delgado-Prieto (2023); Akbulut-Yuksel et al. (2022); Del Carpio and Wagner (2015).

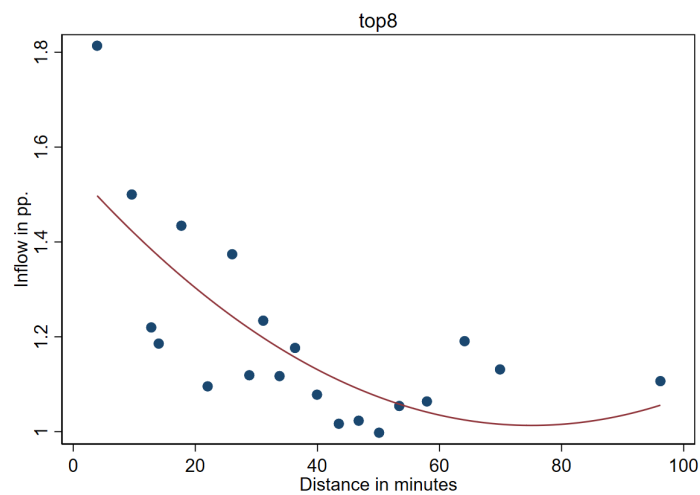
³⁰ $NormTravel_{d,c}^{2016} = \frac{T_{c,d}}{\sum_{d \in state_s} T_{c,d}}$

³¹There were previous migration waves from Afghanistan to Germany (e.g., in the 1970s and early 1990s) due

there were hardly any migrants from the top 8 sending countries before 2013. This fact also explains why a past settlement approach bears little empirical relevance in the current setup.

Figure 3 shows a graphical first stage between the share of arrivals during 2014–2016 and the distance to the closest BAMF branch office. From all of the above, we expect a higher (lower) population share of refugees closer to (further from) a BAMF branch office. This hypothesis about the relevance of our novel instrument is supported visually by Figure 3. It shows how the population share of refugees in a district decreases with a longer driving distance to the next BAMF office (in minutes). We find the same pattern when plotting this relation for all top 8 origin countries separately (Figure A.3 in the appendix). They thus graphically support the relevance of our instrument.

Figure 3: Asylum seekers’ arrivals (2014–2016) by distance to the closest BAMF branch office



Notes: The figure shows a binned scatterplot and a quadratic fit from arrivals of the top 8 refugee-origin countries between 2014–2016 by districts, grouped into 20 equal-sized bins. The x-axis shows the travel distance in minutes between the centroid of a district and the closest BAMF branch office. The bins are weighted by the total population in the district in 2011. *Source:* BAMF. Own depiction.

For this to be a valid instrument, we need that our predicted inflow (based on the distance to the closest BAMF branch office) does not correlate with local labor market conditions. Figure A.4 in the appendix shows that the “urban” dummy is the only strong predictor of our instrument. Therefore, we will control for this variable and assume that conditional on this variable our instrument is as good as randomly assigned. Additionally, following Autor et al. (2014) we check whether the instrument is correlated with pre-treatment outcomes. Table 1 shows the results of estimating regression 1 with pre-treatment outcomes, i.e., the difference between 2013-2011, on our instrument (DIV) and the same covariates as in equation 1. Reassuringly, our instrument is not correlated with these pre-treatment outcomes. These results provide supporting evidence supporting the parallel-trends assumption.

to previous wars.

Table 1: Instrument and Pre-Treatment Outcomes

	Wage (in 2015 €)	FT Employment
DIV	0.040 (0.059)	0.000 (0.000)
Obs.	178,873	450,131

Notes: The table shows the results OLS regressions of our pre-treatment outcomes, measured as the difference between the outcome variable in 2013 and 2011, on our distance based instrument, an urban dummy, and the FE interaction of age, wage decile, and industry (following the controls in equation 1).

First stage

We show the relevance of our instrument in column (1) of Table 2 . The Kleibergen-Paap F-statistic above 10 suggests that the variation generated by responsibilities of the BAMF offices is very relevant.

In the spirit of a placebo regression, column (2) of Table 2 shows that there is no correlation between our instrument and the inflow of immigrants from EU-13 countries, who are free to choose their location (similar to [Foged and Peri, 2016](#)).³² Hence, our instrument does not predict standard economic migration.

Given our instrumental variables approach, we should interpret the following IV results as LATE (i.e. the average treatment effect for the compliers). However, the present case does not directly fit that framework. Instead, the IV estimator with a continuous instrument should be interpreted like a weighted average of different groups of effects ([Angrist and Pischke, 2009](#), p. 181 ff.). One way to think about this is in terms of a discretized instrumental variable. For simplicity, think about the distance IV as if it was a binary instrument. In that view, compliers from the distance IV would be those districts that only host a large number of refugees because of the proximity to a BAMF branch office.

Table 2: First Stage and Placebo

	Arrivals 2014-2016 (1)	Δ EU 2014-2016 (2)
Distance-based IV	0.1695 *** (0.0363)	0.0218 (0.0219)
Age-wage-ind FE	Yes	Yes
Observations	477,205	477,205
KP F-stat	21.856	0.9923

Notes: The dependent variable in column (1) is the arrivals of asylum-seekers in a district between 2014–2016 (our treatment variable). In column (2), the dependent variable is the change in stocks between 2014–2016 of EU-13 immigrants. We estimate the regressions using our main sample where we control for an urban dummy and the FE interaction of age groups, wage deciles, and industries.

Source: [Destatis \(2021a\)](#); [BAMF \(2019, 2020\)](#)

³²EU-13 countries are the ones who have joined the European Union since 2004: Bulgaria, Croatia, Cyprus, Czech Republic, Estonia, Hungary, Latvia, Lithuania, Malta, Poland, Romania, Slovakia and Slovenia.

6 Results

The following empirical results are based on the sample of the labor force (employed and unemployed workers) observed in SIAB in 2013. The treatment is measured as the refugee inflow between 2014 and 2016, with the peak inflow happening in late 2015. Therefore, the interpretation of the coefficients for 2014–2016 should consider that treatment was not yet fully realized and, thus, these years are shaded in gray. These years also coincide with the potential labor demand effects. The coefficients prior to 2013 serve as pre-treatment checks. In all graphs, it is reassuring to see flat pre-trends in the pre-treatment period, which supports the plausibility of the parallel-trends assumption. The outcomes are measured relative to the 2011–2013 average. Only the 2011–2012 outcomes are measured relative to 2013, as otherwise, we would be mechanically setting them to zero.

6.1 Employment Effects

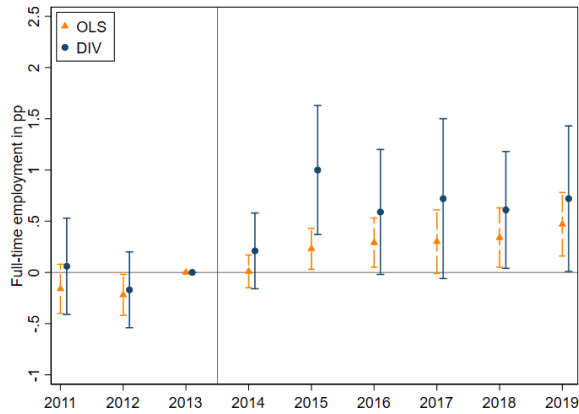
Our main result shows that a one percentage point (pp.) increase in the population share of newly arrived refugees in a district leads to an increase in the probability of being full-time employed in the post-treatment period for natives by about 0.6 pp. on average (Figure 4c). The estimated employment effect is largest in 2015 when the refugee influx peaked, and most refugees were still banned from working. The estimated effect remains large and relevant up until 2019, the end of the observation period, hinting at potential positive effects on natives from refugees' incipient labor supply. This coefficient is statistically significant at the 5% level in 2015 and throughout 2018–2019. The average of our treatment variable, i.e., newly arrived asylum seekers between 2014 and 2016 as a share of the district population in 2011, is 1.18 %. Thus, this refugee inflow, together with the estimated average effect, implies an increase in the probability of being full-time employed for natives by 0.71 pp., an increase of 1.16% with respect to the pre-treatment average of 61% full-time employment rate pre-treatment. The OLS results (depicted as orange dashed lines in Figure 4c) are smaller than the 2SLS results, which is in line with our arguments about a downward bias due to the negative regional selection of refugees.

For completeness, Figures 4(a) and (b) show all possible margins of adjustment. While full-time employment increased for the incumbent workforce in districts with more refugees, part-time work decreased. Hence, on average, there was no effect on employment at the extensive margin for incumbent native workers but an adjustment at the intensive margin. Furthermore, non-employment was only reduced in 2015 but not in the later years. Next, we investigate how the inflow and outflow margins were affected.

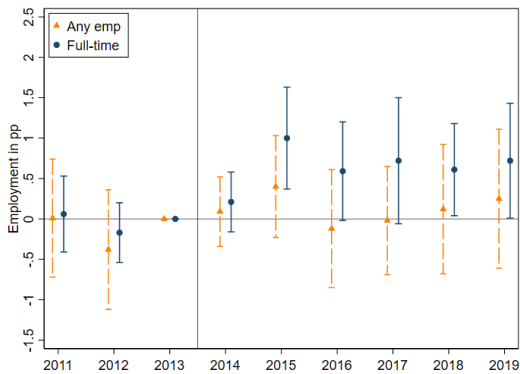
Unemployed and Employed Individuals Pre-Treatment

In the spirit of [Dustmann et al. \(2017\)](#), we analyze whether the (full-time) employment effects come from inflows out of unemployment or less outflows out of employment. To see whether refugee immigration affects more strongly the employment of incumbent or unemployed natives, we split the sample between those individuals unemployed in 2013 and those in any kind of employment in 2013 (Figure 5).

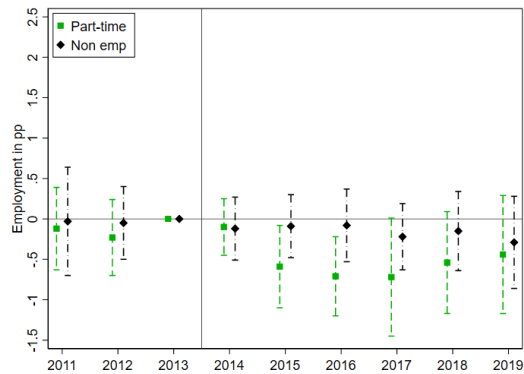
Figure 4: Main Effects on Employment



(a) Outcome: full-time employment



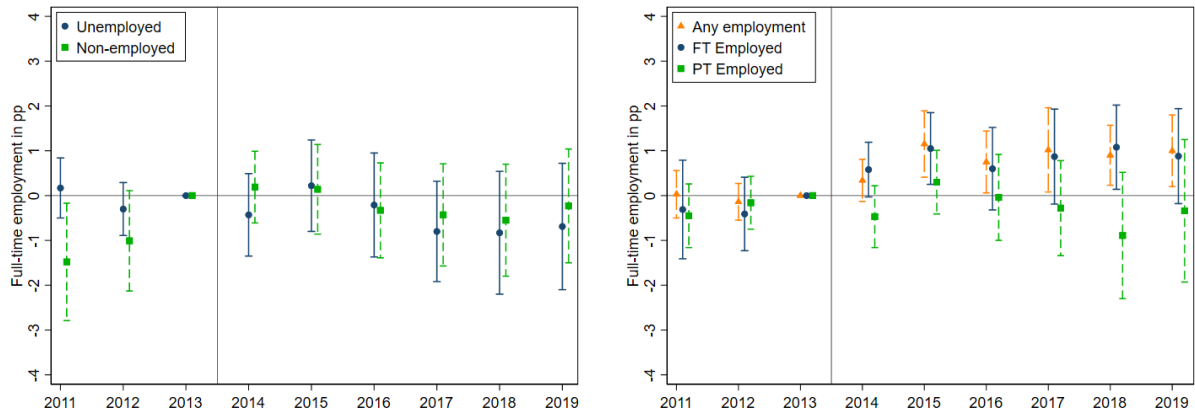
(b) Outcomes: full-time and any employment



(c) Outcomes: part-time and non-employment

Notes: The graph shows the IV coefficients for $\beta_t * 100$ from equation (1) for the yearly regressions and corresponding 95% confidence intervals. The sample consists of 477,205 individuals who were observed in SIAB in 2013 (employed or unemployed). Figure (a) shows the OLS and IV coefficients only for full-time employment as an outcome. Figures (b) and (c) show all different employment outcomes (measured as dummies): any employment (without trainees), full-time, part-time, and non-employment. Table A.5 in the Appendix shows the results displayed in these graphs.

Figure 5: Full-time Employment Effects by Subsamples of the Workforce



(a) Subsamp.: Unemployed and non-employed in 2013 (b) Subsamp.: Any employment, FT and PT employed in 2013

Notes: The graph shows the IV coefficients for $\beta_t * 100$ from equation 1 for the yearly regressions and corresponding 95% confidence intervals. The sample in figure (a) consists of 29,839 individuals who were registered as unemployed in SIAB in 2013. When recovering the non-employed individuals we gain additionally 31,317 individuals. The sample in figure (b) consists of 420,292 individuals who had any type of employment in SIAB in 2013 (orange lines), of 304,878 individuals who were full-time employed (blue lines), and of 119,349 who were part-time employed.

For those unemployed in 2013, we find no statistically significant effects, so we rule out inflows from unemployment to full-time employment as the main channel driving the employment gains from above (Figure 5a). Instead, we find that the effects are driven by those already employed in 2013, meaning that the inflow of asylum-seekers reduced the outflows of full-time employment. Figure 5b further shows that the estimated coefficients are very similar for full-time employees (solid blue line) and for those in any employment (long-dashed orange). Furthermore, we do not see an increase in working full-time for those who worked part-time in 2013 compared to individuals in less intensively treated districts. Hence, taking together, the results shown in Figures 4 and 5 show that incumbent workers in high inflow refugee districts profited by staying longer in full-time employment and not transitioning to part-time jobs, compared to workers in low-refugee districts. The employment gains are driven by those workers who were already employed pre-treatment.

Recovering Non-Employed Individuals

One caveat of the data is that we can only observe individuals who are officially registered as employed or unemployed (at the employment agency). Hence, we might be missing individuals who are non-employed and not registered or out of the labor force. These groups could be most affected by refugee immigration because refugees could be close substitutes and hinder their labor market (re)entry. In an attempt to recover some of these workers, we expand our sample to individuals who appeared in the data in 2011 or 2012 but not in 2013 and to those who entered the SIAB at age 23 in 2014. Figure 5a (dashed green lines) shows that the results remain essentially unchanged. Overall, we find null effects for this "imputed non-employed"

sample.

6.2 Mechanisms: Labor Demand and Labor Supply Effects

Our dynamic effects could be in line with initial labor demand effects from refugee immigration and later labor supply effects. We investigate this idea further by estimating effects across occupation groups using sample splits. To disentangle such effects empirically, we estimate the same main equation but for individual occupation groups (measured in 2013) while excluding industry from the fixed-effects.

Labor Demand Effects

If the arrival of refugees stimulates labor demand (as in [Berbée et al., 2022](#) and [Auer and Götz, 2023](#)), we expect to see effects in occupations related to (i) administration and law, (ii) health, social affairs and education, and (iii) commercial services (catering, hospitality) right after refugees' arrival. Table 3 shows the results separately by individuals' pre-treatment occupation, where we expect to find employment gains in rows 6-8. These results are in line with our expectations, albeit only at weak significance. In 2015, workers in "Health, social affairs, teaching and education" professions were almost 2 pp. more likely to be full-time employed than at baseline (significant at the 1% level). Workers in "Commercial services, trade in goods, distribution, hotel and tourism" were 1.6 pp. more likely to be full-time employed (significant at the 10% level). The estimated coefficients for occupations in administration are not statistically significant but go in the expected direction. Taken together, we interpret these results as support for initial labor demand effects.

Labor Supply Effects

We expect to see labor supply kicking in 2017–2019 when refugees slowly start picking up employment. Refugees work predominantly in occupations related to (i) transport and logistics (32%) and (ii) manufacturing (28%; Appendix Table A.2). We, therefore, expect to see labor supply effects in rows 2 and 5 of Table 3 starting from about 2017. While the effects in transport and logistics are close to zero and statistically insignificant, native employment in manufacturing starts growing at statistically significant levels as of 2018. Finding employment growth here for natives suggests relevant complementarities between refugees and native workers. We interpret the timing of the effects in light of labor supply effects from refugee immigration. Overall, we see few significant employment effects on natives in Table 3 after 2017. Two mechanisms could potentially explain this finding. Either there are hardly any substitution effects or complementarities within the occupation groups, or labor shortages work in a way to fully absorb refugee labor without (negatively) affecting natives.

Employment Effects by Skill Groups

Refugees work disproportionately in low (45%) and medium-skilled (45%) jobs (see Appendix Table A.1), which appears to be an effect from downgrading ([Brücker et al., 2020](#)). Therefore, in

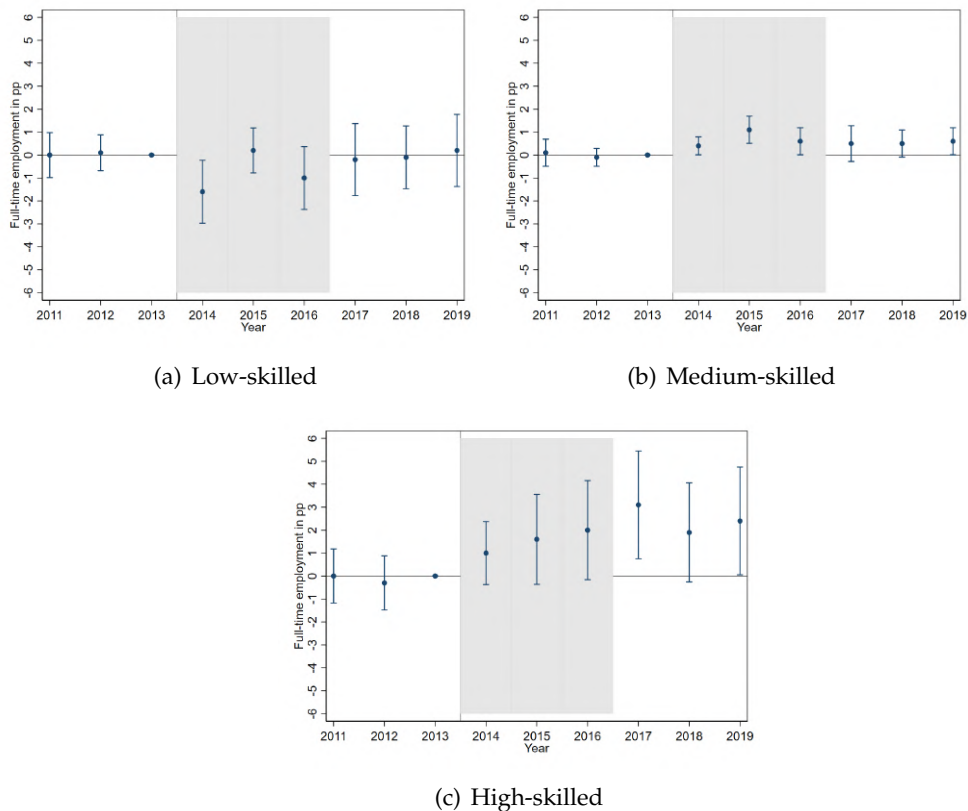
Table 3: Main Results by Occupation Groups

Occupational group	2011	2012	2013	2014	2015	2016	2017	2018	2019	N	KP F-stat
1 Agriculture, forestry, animal husb.	0.0090 (0.0257)	0.0051 (0.0184)	.	0.0108 (0.0215)	0.0081 (0.0067)	0.0283 (0.0230)	0.008 (0.0279)	0.0048 (0.0261)	-0.0035 (0.0245)	6202	23.2065
2 Manufacturing	0.0033 (0.0059)	0.0013 (0.0041)	.	0.0007 (0.0047)	0.008 (0.0067)	0.0025 (0.0065)	0.006 (0.0073)	0.0144 (0.0090)	0.0153* (0.0088)	95274	18.9166
3 Construction	-0.0124 (0.0102)	0.0019 (0.0104)	.	0.0146 (0.0133)	0.0114 (0.0145)	0.0138 (0.0140)	0.0056 (0.0145)	0.0244 (0.0183)	0.0220 (0.0147)	25023	22.0953
4 Natural sciences,IT	-0.0250 (0.0196)	-0.0339 (0.0221)	.	0.0191 (0.0180)	0.0184 (0.0228)	0.0043 (0.0281)	0.0196 (0.0274)	0.0051 (0.0252)	-0.0001 (0.0366)	16524	8.9833
5 Transport, logistics, security	0.0071 (0.0057)	0.0033 (0.0045)	.	-0.0048 (0.0064)	0.0001 (0.0052)	-0.0038 (0.0054)	0.0029 (0.0095)	0.0043 (0.0070)	0.0023 (0.0068)	49187	28.1124
6 Commercial services,hotel and tourism	-0.0018 (0.0084)	-0.0017 (0.0064)	.	0.0047 (0.0054)	0.0156* (0.0093)	0.0108 (0.0088)	0.0144 (0.0089)	0.0099 (0.0096)	0.0147* (0.0086)	48683	19.1661
7 Accounting, law and administration	0.0028 (0.0083)	-0.0013 (0.0065)	.	0.0063 (0.0070)	0.0074 (0.0073)	0.0100 (0.0069)	0.0096 (0.0082)	0.0065 (0.0107)	0.0069 (0.0094)	96738	17.9219
8 Health, social services, education	0.0093 (0.0079)	0.0050 (0.0060)	.	-0.0012 (0.0056)	0.0206** (0.0087)	0.0142 (0.0088)	0.0169 (0.0112)	0.0046 (0.0097)	0.0144 (0.0109)	73874	20.4147
9 Social sciences, culture	0.0094 (0.0257)	-0.0115 (0.0193)	.	0.0255 (0.0233)	0.0400 (0.0378)	0.0213 (0.0295)	0.0339 (0.0310)	0.0149 (0.0257)	-0.0012 (0.0284)	11333	15.1983
Urban dummy	Yes	Yes	Yes	Yes	Yes	Yes	Yes	Yes	Yes	Yes	Yes
Age group*wage decile FE	Yes	Yes	Yes	Yes	Yes	Yes	Yes	Yes	Yes	Yes	Yes

Notes: This table shows the results for coefficients for β_t of equation 1 for the years 2011–2019 and corresponding standard errors. Every row represents the subsample of occupation groups, defined by the occupation of a worker in 2013, and the columns show the yearly coefficients. Statistically significant at *** $p < 0.01$, ** $p < 0.05$, * $p < 0.1$

the labor supply phase after 2017, we could expect to find negative substitution effects for low-skilled and positive effects from complementarities for high-skilled natives, while the expectations are unclear for the medium skilled. Figure 6 shows the estimated employment effects on natives by splitting up the sample by pre-treatment skill level based on education groups. Low-skilled native incumbent workers exhibit negative effects in 2014 and 2016, though at large confidence intervals (as this unskilled group is small in Germany). This could hint at a substitution between refugees and low-skilled workers, although during 2014–2016, the employment rate of refugee-origin workers was very low. Hence, substitution effects are pretty unlikely. Alternatively, low-skilled workers could have anticipated a low-skilled labor supply shock and decided to take up additional training. However, due to data limitations, we cannot test this hypothesis. Medium-skilled workers display slightly positive coefficients that are only statistically significant in 2015. At the same time, for high-skilled employees, the full-time employment growth is large, significant, and growing over time as refugees enter the labor market. This again fits well the hypothesis of complementarities between refugees and natives, especially between refugees in low-skilled jobs and high-skilled natives.

Figure 6: Employment Effects by Skill Groups



Notes: The graphs show the IV coefficients for $\beta_t * 100$ from equation 1 and corresponding 95% confidence intervals for the yearly regressions by skill-groups. The sample in figure (a) consists of 39,155 low-skilled workers, in figure (b) of 351,249 medium-skilled workers, and of 81,355 high-skilled workers in figure (c).

Again, unemployed natives could be most affected by refugees employment take-up if it hinders their re-employment. Overall, the results by skill groups show no statistically significant effect for the unemployed subsample. This adds to the overall notion of our results that

we cannot detect (negative) substitution effects between refugees and low-skilled natives—at least not in terms of employment.

Since our low-skilled sample (defined by education) is relatively small, we run heterogeneities by wage-decile at baseline (see Table A.7 in the Appendix). We find positive and marginally significant full-time employment effects for medium-wage workers (wage decile 4) during the labor demand phase (2014-2016) and larger and significant effects for high-wage workers (wage decile 9) throughout the post-treatment phase. Both effects go in line with our findings for medium and high-skilled workers. However, we also find some indication of positive effects (although only marginally significant for two years) for low-wage workers (wage decile 2), which might imply that low-skilled workers were not harmed by refugee migration.

Overall, our results imply positive employment effects on incumbent native workers that are in line with early labor demand effects and delayed labor supply effects. For the labor supply phase after 2017, the occupation and skill groups results suggest positive complementarities between refugees in low-skilled jobs and especially high-skilled natives. Meanwhile, unemployed native workers show insignificant employment effects upon refugee arrival.

Employment Effects by Gender

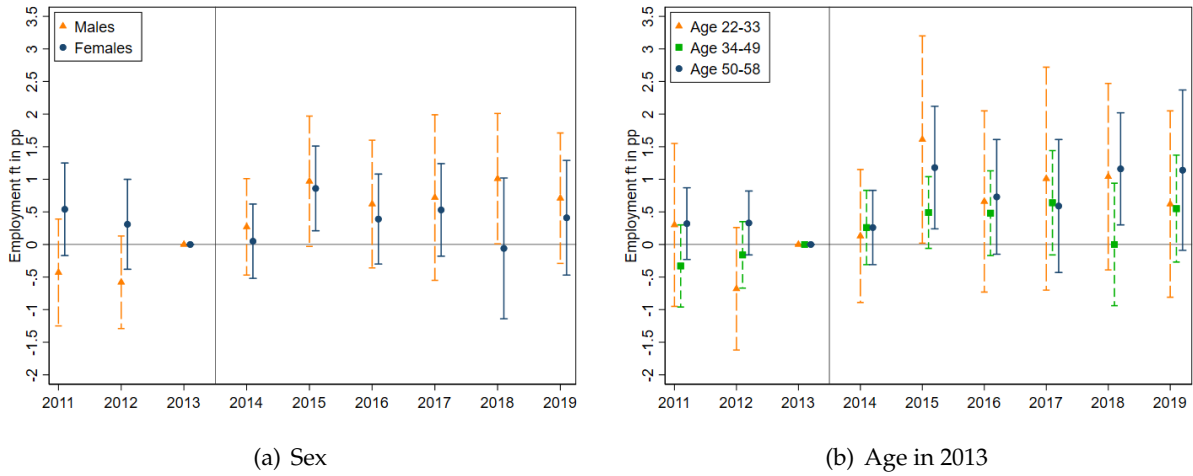
During the labor demand phase, refugees receive support mainly from workers in health, social services and education, commercial services (accommodation and food) and administration. These occupations are female-dominated, so we expect to find the initial employment gains to be concentrated among women. Splitting up the sample by gender shows that women experienced positive employment effects in 2015 that are statistically significant, i.e., when refugees are hosted, administered, and supported (Figure 7). Meanwhile, the positive employment effects for males are statistically significant in 2018, i.e., when refugees start working themselves. Refugees work predominantly in male-dominated occupations such as logistics and manufacturing. Together, this disaggregation by gender provides additional support to our interpretation of labor demand and supply effects.

Employment Effects by Age Group

By age groups, the reduced outflows out of full-time employment are driven by the youngest (aged 22–33 in 2013) and the oldest (aged 50–58) employees (Figure 7). These are also the groups with the highest employment elasticities. Particularly, we hypothesize that women and men remain longer in the labor force by, e.g., postponing early retirement. We see results along these lines when we further split the age groups by gender (Figure ??). This figure reiterates that elderly females show the strongest positive effects in 2015, whereas elderly males show the strongest positive effects in 2018.

So far, the literature has found large employment losses among older workers upon immigration (Dustmann et al., 2023, 2017). Our results imply employment gains for older incumbent workers upon immigration. A high labor supply elasticity of older workers can reconcile both sets of results. This way, older workers reduce employment most strongly when immigration reduces employment, as in past episodes. By contrast, the refugee immigration episode we

Figure 7: Employment Effects by Sex or Age Groups



Notes: The graphs show the IV coefficients for $\beta_t * 100$ from equation 1 and 95% confidence intervals for the yearly regressions by sex and age groups. The sample in figure (a) consists of 203,919 men and 99,961 females. The samples in figure (b) of 85,249 for age group 22-33, 135,301 for age group 34-49, and 84,328 for age group 50-58. The age refers to the year 2013.

studied leads to employment gains that benefit older incumbent workers more strongly.

While there seem to be mainly winners and almost no losers when looking at the employment effects of refugee migration on native workers, we now look at mobility responses, wages, and tasks. These could be potential margins of adjustment where we could see adverse effects.

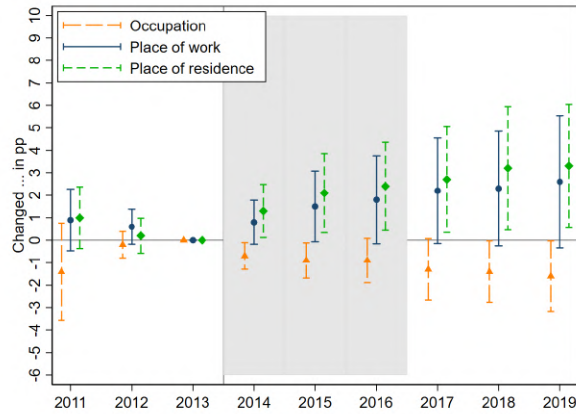
6.3 Further Outcomes: Mobility Responses, Wages, and Tasks

Individual Mobility Responses

Workers can respond by either changing their occupation, changing their place of work, or moving out of their current district of residence. Looking at these outcomes, we only focus on the subsample of workers employed in every pair of years, i.e., employed in 2013 and any other year (unbalanced panel), to have information on occupations and workplaces. Figure 8 shows that workers in more intensively treated districts are less likely to change their occupation than workers in control districts.

More interestingly, the likelihood of changing their district of work increases by 1.5 pp. in 2015 and reaches 2.6 pp. by 2019. Similarly, incumbent workers in districts with a higher share of newly arrived refugees were, on average, 2.5 pp. more likely to change their district of residence during the post-treatment period. The changes in the place of residence and of work are mainly driven by younger workers (aged 22–33) and somewhat by those aged 34–49 (see Figure 10). These results indicate some “native flight” away from those districts that experienced a larger refugee inflow. Meanwhile, commuter outflows from high-refugee districts have also increased. Figure 9 shows that low-skilled workers in high-refugee districts were more likely to change their place of work than low-skilled workers in low-refugee districts, especially dur-

Figure 8: Mobility responses: changes in occupation, place of residence or work



Notes: The sample is an unbalanced panel of all workers who have been employed in 2013 and in any other year. The graphs show the IV coefficients for $\beta_t * 100$ from equation 1 and 95% confidence intervals for the yearly regressions, where the outcomes are: the changes in occupation, place of work, and residence coded as dummies and measured with respect to 2013.

ing 2017–2019.³³ However, the point estimates for job change and place of residence are not statistically significant. On the other hand, medium-skilled workers were less likely to change occupations than workers in low-inflow districts. Nevertheless, medium-skilled workers were more likely to change their workplace and residence. This pattern resembles very much the one from outbound commuters in Figure A.9. Finally, the point estimates for change in the type of occupation and place of work are statistically not significant for high-skilled workers. What is striking is the increase in their probability of changing their place of residence. But, do they move to districts with a lower inflow of refugees?

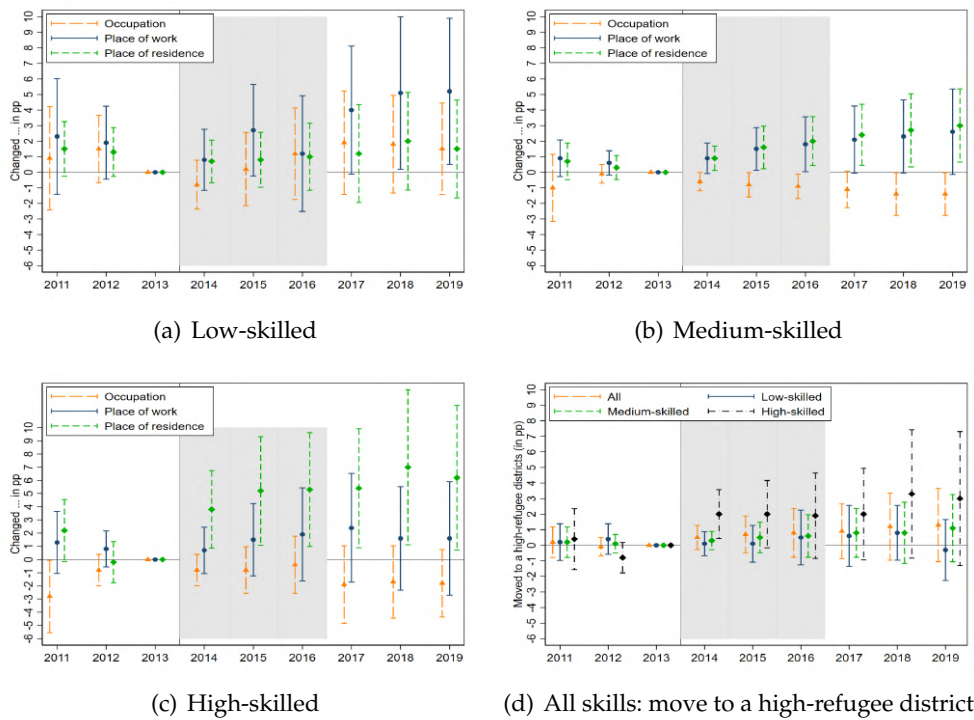
Figure 9d gives us the answer to this question. The graph shows, for all skill levels, the probability of moving to a high refugee inflow district. The point estimates for all workers are positive but statistically not significant. The ones for high-skilled workers are much larger but also less precisely estimated. These positive coefficients suggest that workers residing in high refugee inflow districts in 2013 were more likely to move to other high refugee inflow districts post-treatment.

Wages

To investigate the effect on wages rather than employment, we use a sample of continuously employed full-time workers (in any pair of years, including 2013). The left panel of Figure 11 shows zero wage effects for full-time workers on average, no matter whether measuring the percentage growth (dashed green lines) or in Euros (solid blue lines). The yearly regressions show that asylum-seekers' arrival did not seem to depress the wages of native workers. Figure A.6 shows that these effects are statistically indistinguishable from zero for all skills groups. Hence, these results suggest zero substitution effects between refugees and native workers, supporting our positive employment effects. Given that refugees are mainly employed in low and medium-skilled jobs, we would expect these groups to be more negatively affected if

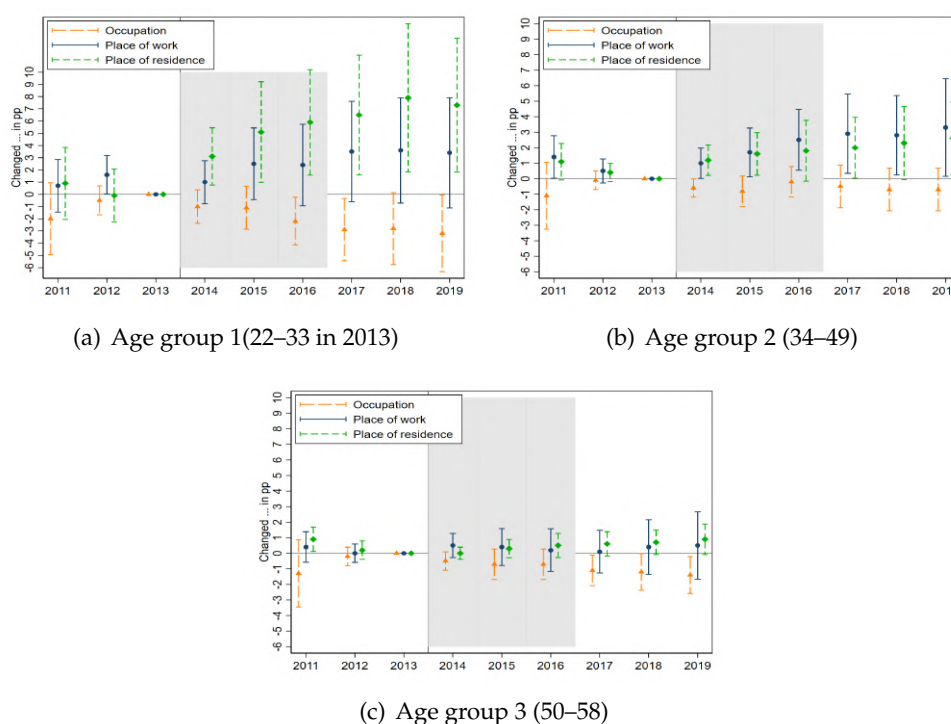
³³The confidence intervals are large due to smaller samples for low and high-skilled workers.

Figure 9: Mobility responses by skills: changes in occupation, place of residence or work



Notes: The sample is an unbalanced panel of all workers employed in 2013 and any other year by skill level. Subfigures (a) to (c) show as outcomes the changes in occupation, place of work, and residence are measured with respect to 2013 and are coded as dummies. Subfigure (d) shows all skill groups in one graph, with the outcome “change place of residence to a high-refugee inflow district”. This variable is also coded as a dummy equal to one if the individual lives in a district with above median refugee-inflow in 2013. The population-weighted median inflow was 1.15%.

Figure 10: Mobility responses by age groups: changes in occupation, place of residence or work



Notes: The sample is an unbalanced panel of all workers who have been employed in 2013 and in any other year, by age groups. Subfigures (a) to (c) show as outcomes the changes in occupation, place of work, and residence are measured with respect to 2013 and are coded as dummies.

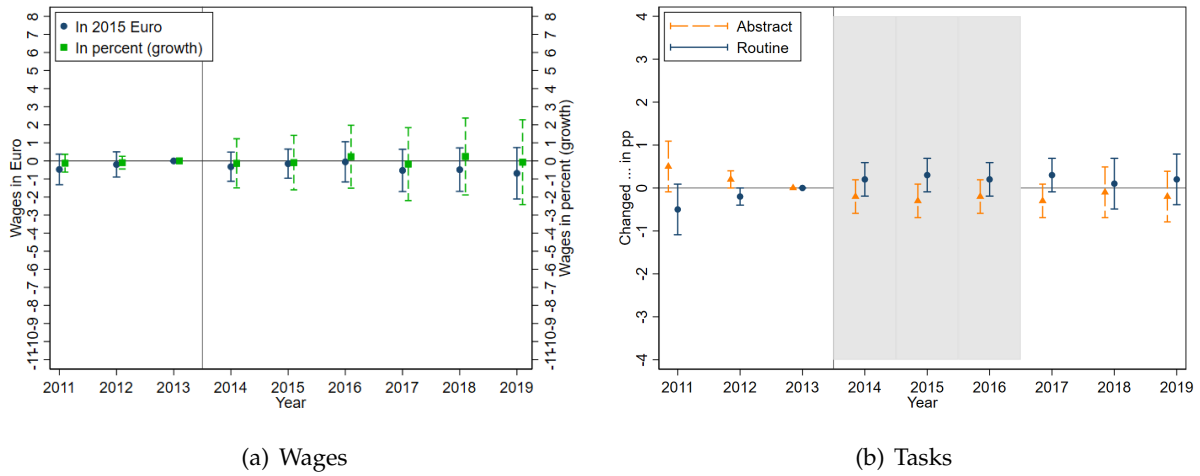
refugees and natives were substitutes in the labor market. Our results, however, hint at imperfect substitutability between refugees and natives; and support our hypothesis that refugees might take up jobs usually not performed by native workers.

As a limitation, we only have information only daily wages. Thus, we cannot disentangle the effect of a change in hourly wages or working hours to shed further light on more detailed margins of adjustment.

Job Task Components

Next, we check whether the job task components of natives have changed in response to the refugee arrivals. Following the argument of [Foged and Peri \(2016\)](#), low-skilled natives could be promoted to better jobs with more communication-intensive tasks, using their comparative advantage in the language. For studying the effect on job task components, we use a sample of continuously employed individuals (by pair of years) in any employment. Following [Dustmann et al. \(2023\)](#), we group jobs by their main task into abstract (analytical and interactive) and routine (including manual). The right panel of Figure 11 shows on average null effects for the main tasks component of the job. The vast majority of results for the different subsamples by education and gender are statistically insignificant (Figure A.7). Again, all the coefficients are statistically indistinguishable from zero across skill groups. A positive point estimate for low-skilled workers in 2015 suggests a slight increase in predominantly routine jobs

Figure 11: Wages and tasks



Notes: The graphs show the IV coefficients for $\beta_t * 100$ from equation 1 and corresponding 95% confidence intervals for the yearly regressions using as outcomes changes in wages (in 2015 Euros and in percent change) and changes in the job's main task. We grouped analytical non-routine and interactive tasks as "abstract", and cognitive routine, and manual (routine and non-routine) tasks as "routine".

for this year. On the other hand, positive—but very imprecise—point estimates for high-skilled workers suggest an increase in abstract jobs, especially during 2018–2019, when refugees start supplying labor which would again support the complementarity among refugees and high-skilled workers. However, there is no indication of similar effects for low-skilled workers as in [Foged and Peri \(2016\)](#).

Mobility responses

Additionally, we can look at in- and out-migration, and commuter flows using the official regional statistics (see [Figure A.8](#) in the Appendix). First, we look at native movers across district borders (i.e., the native flight). None of our results are statistically different from zero. However, we see a small spike in outflows in 2014 and a similar spike in inflows in 2015. Thus, there is some evidence for a small but non-persistent native flight and a slight increase in inflows following the refugee arrivals. This pattern is in line with the findings by [Glitz et al. \(2023\)](#). The authors find that the refugee inflows displaced the native population in neighborhoods by less than 1:1, i.e., inflows were somewhat larger than outflows. They rationalize their results by indicating that refugees could have positive effects on local amenities.

Similarly, we investigate how commuter flows changed after the refugee arrivals (see [Figure A.9](#)). The effect for inbound commuters is quite imprecisely estimated, but the point estimates are all close to zero. For outbound commuters, we see a positive and increasing trend. Hence, we find evidence supporting our findings from the individual-level regressions: outbound commuters increase in districts with a larger share of refugees.

7 Sensitivity Analysis

Table A.8 in the Appendix shows our main results using different specifications of the instruments and adding further covariates. The first row shows our main results for comparison.

Using the Distances to the 2014 BAMF Branch Offices. Since the BAMF opened new branch offices in 2015–2016, the concern might be that the offices in place in 2016 are less exogenous than the ones already in place in 2014. Therefore, we rebuilt our instrument using only the distances to the BAMF offices already in place in 2014. It is worth noting that the new offices usually enlarged the already existing branch offices. The second row of table A.8 shows the results. The instrument has less power (smaller F-stat), but the results remain very similar.

Using EASY Arrivals as Shift. The current instrument is built using the AZR data provided by the BAMF. As mentioned in Section 3, these data might suffer from a lag in reporting, given that asylum-seekers were not immediately registered after arrival. The EASY data would provide a more accurate picture of the precise time of arrival. However, from anecdotal evidence, we know that in many cases, the EASY registration also had to be done ex-post (after the actual arrival and even allocation of refugees). Furthermore, the AZR data might provide a more accurate picture since refugees might have had registered until the end of 2016. Since both datasets have pros and cons, we use the EASY arrivals instead of the AZR data as the “shift” part of our instrument for comparison. The third row of Table A.8 shows these results. Again, the instrument has a smaller F-stat, but the point estimates remain very similar.

Inclusion of Further Regional Covariates. We include further regional covariates to check that we are not omitting any relevant regional variable. Our results remain largely unchanged, including further regional covariates (population density, GDP pc, female share, unemployment rate, etc.). See the fourth row of Table A.8.

Using only 1-digit Industry FE. Since we lose some observations when including FE interactions at the 2-digit industry, we re-estimate our results using only 1-digit industry FE in our interactions (see the bottom of table A.8). The results remain largely unchanged.

Using a TWFE specification. Finally, we use a two-way fixed-effect model to check sensitivity of our empirical strategy to a different model. We estimate the following equation, where the base year is 2013 and the year*shock interactions are instrumented by interactions of year*instrument:

$$y_{idt} = \alpha_i + \phi_t + \sum_{r=-2}^{-1} \beta_r S_{d,1416} + \sum_{r=1, r \neq 0}^6 \beta_r S_{d,1416} + \epsilon_{idt} \quad (3)$$

Figure 12 shows the results. Overall, the results follow a very similar pattern than the ones from our main specification (see Figure 4, but the point-estimates of the TWFE model are slightly larger and statistically significant at the 5% level throughout the post-treatment period. On average, the estimates from our preferred long-differences model are 0.64 pp. while the average of the TWFE post-treatment coefficients are 1.29 pp. Almost twice as large, as in our main specification.

Figure 12: Robustness: TWFE specification on Employment



Notes: The graph shows the OLS and IV coefficients for $\beta_r \cdot 100$ from equation (3) for the two-way fixed effects model. The sample consists of 477,488 individuals and who were observed in SIAB in 2013 (employed or unemployed).

8 Conclusion and Discussion

Germany has seen a large and unexpected influx of refugees which peaked in 2015 and now makes up 2% of the population. While refugees are banned from working at first, they slowly start entering the labor market due to a lack of host-country human capital. This inflow came at a time when the German labor market was in good condition, with record lows of unemployment and growing skill shortages in some occupations and regions. We study the effect of refugee arrivals on individual natives' labor market outcomes. We focus on employment outcomes since Germany's wage-setting process is relatively rigid. Nevertheless, we also check wage changes, changes in main job tasks, and mobility responses.

Refugees are allocated across German districts by a dispersal policy. However, deviations from the established quotas occurred during the peak of the inflow, and, in addition, refugees are free to move after some time. In Germany, refugees often select into large urban centers, exhibiting high unemployment rates. Hence, there is a negative regional selection of refugees. We address this identification challenge by developing a novel instrument that relies on the responsibilities of the BAMF branch offices for processing asylum claims. These different responsibilities generate regional variation in refugees' population share and country of origin composition. Using a novel distance-based instrument—from the centroid of each district to the closest BAMF branch office—together with individual-level panel data, we can follow individuals over time, partly similar to [Foged and Peri \(2016\)](#), which allows us to causally identify the labor market effects of refugee migration and disentangle the dynamics of the effects. We attempt to shed light on different adjustment mechanisms by separating employed vs. unemployed individuals, females vs. males, young vs. old, and different occupational groups.

Our results show that the arrival of refugees raises the probability of full-time employment among natives: A 1 pp. increase in refugees' arrivals to a district increases the probability of full-time employment among natives by 0.6 pp. These employment gains appear to be driven initially by labor demand effects from hosting and administering refugees. Later,

refugees slowly start providing labor themselves, which might exert substitution effects, especially among low-skilled natives. However, our results show no indication of adverse substitution effects by skill groups. As expected, the results also show strong positive complementarities between refugees and high-skilled natives regarding employment. Regional labor markets seem to adapt by reducing outflows of full-time employment, especially by young and old workers. Likely, elderly workers stay longer in full-time employment than they otherwise would have. On top of the overall positive employment effects, the effects we estimate for wages and the main task component of the job are statistically indistinguishable from zero. We further investigate workers' mobility and find an increase in the probability of changing workplace and residence after the arrival of refugees. On the bright side, this native out-migration was higher to other districts that also received a large inflow of refugees. Taken together, we interpret our results as showing that the arrival of refugees did not substitute natives, not even low-skilled employees. At the same time, the results imply strong employment complementarities between refugees and natives, which benefit especially high-skilled natives.

Our results provide important insights into the labor market effects of refugee migration in the host countries, a crucial topic for forming public opinion and designing policy measures. Our analysis shows that not only the skill composition matter to define who wins and loses after a migration shock but also gender and the type of jobs where men and women specialize. Additionally, it is crucial to describe the labor market conditions of the host countries as these contribute to our understanding of the potential negative or positive effects of refugee migration.

References

- Akbulut-Yuksel, M., N. Mocan, S. Tumen, and B. Turan (2022). The crime effect of refugees. *Journal of Policy Analysis and Management*.
- Aksu, E., R. Erzan, and M. G. Kırdar (2022). The impact of mass migration of syrians on the turkish labor market. *Labour Economics* 76, 102183.
- Altonji, J. G. and D. Card (1991). The effects of immigration on the labor market outcomes of less-skilled natives. In *Immigration, trade, and the labor market*, pp. 201–234. University of Chicago Press.
- Angrist, J. D. and J.-S. Pischke (2009). *Mostly harmless econometrics: An empiricist's companion*. Princeton university press.
- Auer, D. and L. Götz (2023). Refugee migration, labor demand and local employment. *Socio-Economic Review*, mwad040.
- Autor, D. H., D. Dorn, G. H. Hanson, and J. Song (2014). Trade adjustment: Worker-level evidence. *The Quarterly Journal of Economics* 129(4), 1799–1860.
- Aydemir, A. and G. J. Borjas (2011). Attenuation bias in measuring the wage impact of immigration. *Journal of Labor Economics* 29(1), 69–112.
- BAMF. The Federal Office, From a Federal Authority to a Federal Office.
- BAMF (2016). Ablauf des deutschen Asylverfahrens. Ein Überblick über die einzelnen Verfahrensschritte und rechtlichen Grundlagen. Bundesamt für Migration und Flüchtlinge.
- BAMF (2017). Das Bundesamt in Zahlen 2016.
- BAMF (2019). Aufhältige drittstaatsangehörige (ohne schweiz), die im zeitraum von 2011-12 bis 2018-12 nach deutschland eingereist sind (letzte einreise), nach ausgewählten gründen des aufenthalts, aktenführender behörde und staatsangehörigkeit. Technical report, BAMF, Referat 72D. Data provided upon request.
- BAMF (2020). Easy-hkl-liste stand 2013-2017. außenstellen/ankunftscentren und erstaufnahmeeinrichtungen, die anträge bearbeiten, nach hkl zuständigkeit. Technical report, BAMF, Referat 61C. Data provided upon request.
- Becker, S. O. and A. Ferrara (2019). Consequences of forced migration: A survey of recent findings. *Labour Economics* 59, 1–16.
- Beinhorn, J., S. Gasch, B. Glorius, M. Kintz, and H. Schneider (2019). National report on the governance of the asylum reception system in germany. *Ceaseval Research on the common European Asylum System* 23.
- Berbée, P., H. Brücker, A. Garloff, and K. Sommerfeld (2022). Refugees as a labour demand shock and the adjustment of local labour markets. *ZEW Discussion Papers* (22-069).
- Borjas, G. J. (1999). The economic analysis of immigration. *Handbook of Labor Economics* 3, 1697–1760.
- Borjas, G. J. (2003). The labor demand curve is downward sloping: Reexamining the impact of immigration on the labor market. *The Quarterly Journal of Economics* 118(4), 1335–1374.
- Borjas, G. J. (2013). The analytics of the wage effect of immigration. *IZA Journal of Migration* 2(1), 1–25.

- Borjas, G. J. and J. Monras (2017). The labour market consequences of refugee supply shocks. *Economic Policy* 32(91), 361–413.
- Boustan, L. P., P. V. Fishback, and S. Kantor (2010). The effect of internal migration on local labor markets: American cities during the great depression. *Journal of Labor Economics* 28(4), 719–746.
- Bredtmann, J. (2022). Immigration and electoral outcomes: Evidence from the 2015 refugee inflow to germany. *Regional Science and Urban Economics* 96, 103807.
- Brell, C., C. Dustmann, and I. Preston (2020). The labor market integration of refugee migrants in high-income countries. *Journal of Economic Perspectives* 34(1), 94–121.
- Brenzel, H. and Y. Kosyakova (2019). Geflüchtete auf dem deutschen Arbeitsmarkt: Längere Asylverfahren verzögern Integration und Spracherwerb. *IAB-Kurzbericht* 6/2019. Nürnberg.
- Brücker, H., T. Fendel, L. Guichard, L. Gundacker, P. Jaschke, S. Keita, Y. Kosyakova, and E. Valizadeh (2020). Fünf Jahre "Wir schaffen das" - Eine Bilanz aus der Perspektive des Arbeitsmarktes. *IAB-Forschungsbericht* (11).
- Brücker, H., A. Hauptmann, and P. Jaschke (2020). Beschränkungen der wohnortwahl für anerkannte geflüchtete: Wohnsitzauflagen reduzieren die chancen auf arbeitsmarktintegration. Technical Report 3/2020, IAB-Kurzbericht.
- Brücker, H., Y. Kosyakova, and E. Schuß (2020). Integration in Arbeitsmarkt und Bildungssystem macht weitere Fortschritte. *IAB-Kurzbericht* 4, 2020.
- Brücker, H., Y. Kosyakova, and E. Schuß (2020). Fünf jahre seit der fluchtmigration 2015: Integration in arbeitsmarkt und bildungssystem macht weitere fortschritte.
- Bureau of Labor Statistics, U. D. o. L. The economics daily, foreign-born workers made up 17.4 percent of labor force in 2019. Visited May 07, 2021.
- Card, D. (1990). The impact of the mariel boatlift on the miami labor market. *ILR Review* 43(2), 245–257.
- Card, D. (2001). Immigrant inflows, native outflows, and the local labor market impacts of higher immigration. *Journal of Labor Economics* 19(1), 22–64.
- Card, D. (2009). Immigration and inequality. *American Economic Review* 99(2), 1–21.
- Caruso, G., C. G. Canon, and V. Mueller (2021). Spillover effects of the venezuelan crisis: migration impacts in colombia. *Oxford Economic Papers* 73(2), 771–795.
- Ceritoglu, E., H. Yunculer, H. Torun, and S. Tumen (2017). The impact of syrian refugees on natives' labor market outcomes in turkey: evidence from a quasi-experimental design. *IZA Journal of Labor Policy* 6(1), 1–28.
- Chin, A. and K. E. Cortes (2015). The refugee/asylum seeker. In B. R. Chiswick and P. W. Miller (Eds.), *Handbook of the Economics of International Migration*, Volume 1, Chapter 12, pp. 585–658. North-Holland.
- Constant, A. F. (2014). Do migrants take the jobs of native workers? *IZA world of labor*.
- Cortes, K. E. (2004). Are refugees different from economic immigrants? Some empirical evidence on the heterogeneity of immigrant groups in the United States. *Review of Economics and Statistics* 86(2), 465–480.

- Cortes, P. and J. Pan (2018). Occupation and gender. *The Oxford handbook of women and the economy*, 425–452.
- Cortes, P. and J. Tessada (2011). Low-skilled immigration and the labor supply of highly skilled women. *American Economic Journal: Applied Economics* 3(3), 88–123.
- Dauth, W. and J. Eppelsheimer (2020). Preparing the sample of integrated labour market biographies (siab) for scientific analysis: a guide. *Journal for Labour Market Research* 54(1), 1–14.
- Dehos, F. T. (2021). The refugee wave to germany and its impact on crime. *Regional Science and Urban Economics* 88, 103640.
- Del Carpio, X. V. and M. Wagner (2015). The impact of syrians refugees on the turkish labor market.
- Delgado-Prieto, L. (2023). Immigration and worker responses across firms: Evidence from administrative records in colombia.
- Dengler, K., B. Matthes, and W. Paulus (2014). Occupational tasks in the german labour market * an alternative measurement on the basis of an expert database. (fdz-methodenreport, 12/2014 (en)). Technical report, IAB FDZ.
- Destatis (2021a). Ausländer (anzahl): Kreise, stichtag, geschlecht, ländergruppierungen/staatsangehörigkeit. code 12521-0041. Technical report, Statistisches Bundesamt (Destatis) - Genesis Online. Data retrieved on 22.11.2021.
- Destatis (2021b). Eckzahlen zum arbeitsmarkt, deutschland.
- Deutscher Bundestag (2017). Ergänzende Informationen zur Asylstatistik für das zweite Quartal 2017 - Schwerpunktfragen zur Asylverfahrensdauer. Drucksache 18/13472 - Antwort der Bundesregierung auf die Kleine Anfrage der Abgeordneten Ulla Jelpke, Frank Tempel, Sevim Dagdelen, weiterer Abgeordneter und der Fraktion DIE LINKE.
- Dustmann, C., F. Fasani, T. Frattini, L. Minale, and U. Schönberg (2017). On the economics and politics of refugee migration. *Economic policy* 32(91), 497–550.
- Dustmann, C., B. Fitzenberger, U. Schönberg, and A. Spitz-Oener (2014). From sick man of europe to economic superstar: Germany's resurgent economy. *Journal of economic perspectives* 28(1), 167–88.
- Dustmann, C., B. Fitzenberger, and M. Zimmermann (2018). Housing expenditures and income inequality. *ZEW-Centre for European Economic Research Discussion Paper* (18-048).
- Dustmann, C. and J.-S. Görlach (2016). The economics of temporary migrations. *Journal of Economic Literature* 54(1), 98–136.
- Dustmann, C., S. Otten, U. Schönberg, and J. Stuhler (2023). The impact of immigration on regions and workers.
- Dustmann, C., U. Schönberg, and J. Stuhler (2016). The impact of immigration: Why do studies reach such different results? *Journal of Economic Perspectives* 30(4), 31–56.
- Dustmann, C., U. Schönberg, and J. Stuhler (2017). Labor supply shocks, native wages, and the adjustment of local employment. *The Quarterly Journal of Economics* 132(1), 435–483.
- Dustmann, C., K. Vasiljeva, and A. Piil Damm (2019). Refugee migration and electoral outcomes. *The Review of Economic Studies* 86(5), 2035–2091.

- D'Amuri, F., G. I. Ottaviano, and G. Peri (2010). The labor market impact of immigration in western germany in the 1990s. *European Economic Review* 54(4), 550–570.
- Edin, P.-A., P. Fredriksson, and O. Åslund (2003). Ethnic Enclaves and the Economic Success of Immigrants – Evidence from a Natural Experiment. *The Quarterly Journal of Economics* 118(1), 329–357.
- Edo, A. (2019). The impact of immigration on the labor market. *Journal of Economic Surveys*.
- Eurostat (2016). Asylum in the eu member states. record number of over 1.2 million first time asylum seekers registered in 2015. Accessed: April 18, 2021.
- Fallah, B., C. Krafft, and J. Wahba (2019). The impact of refugees on employment and wages in jordan. *Journal of Development Economics* 139, 203–216.
- Fasani, F., T. Frattini, and L. Minale (2021). Lift the ban? initial employment restrictions and refugee labour market outcomes. *Journal of the European Economic Association* 19(5), 2803–2854.
- Fasani, F., T. Frattini, and L. Minale (2022, March). (The Struggle for) Refugee integration into the labour market: evidence from Europe. *Journal of Economic Geography* 22(2), 351–393.
- Federal Employment Agency (2019a). Berichte: Arbeitsmarkt kompakt - fluchtmigration. Technical report, Bundesagentur für Arbeit.
- Federal Employment Agency (2019b). Beschäftigte nach staatsangehörigkeiten (quartalszahlen). Technical report, Bundesagentur für Arbeit.
- Foged, M. and G. Peri (2016). Immigrants' effect on native workers: New analysis on longitudinal data. *American Economic Journal: Applied Economics* 8(2), 1–34.
- Frank, D. (2009). The effect of migration on natives' employment outcomes: Evidence from the fall of the berlin wall. *INSEAD Working Paper*.
- Frodermann, C., A. Schmucker, S. Seth, P. Vom Berge, et al. (2021). Sample of integrated labour market biographies (siab) 1975-2019. Technical report, Institut für Arbeitsmarkt-und Berufsforschung (IAB), Nürnberg [Institute for ...]
- Fuchs, J., A. Kubis, and L. Schneider (2019). Zuwanderung und digitalisierung wie viel migration aus drittstaaten benötigt der deutsche arbeitsmarkt künftig? Technical report, Bertelsmann Stiftung.
- Gallegos Torres, K. (2023). The 2015 refugee inflow and concerns over immigration. *European Journal of Political Economy* 78, 102323.
- Gamalerio, M., M. Luca, A. Romarri, and M. Viskanic (2021). Refugee reception, extreme-right voting, and compositional amenities: evidence from italian municipalities. *Available at SSRN* 3277550.
- Gehrsitz, M. and M. Ungerer (2022). Jobs, crime and votes: A short-run evaluation of the refugee crisis in germany. *Economica*.
- Geis, W. and A. K. Orth (2016). Flüchtlinge regional besser verteilen–ausgangslage und ansatzpunkte für einen neuen verteilungsmechanismus. *Gutachten für die Robert Bosch Stiftung, Köln*.
- Glitz, A. (2012). The labor market impact of immigration: A quasi-experiment exploiting immigrant location rules in germany. *Journal of Labor Economics* 30(1), 175–213.

- Glitz, A., L. Hörnig, K. Körner, and J. Monras (2023). *The geography of refugee shocks*. Number 994. Ruhr Economic Papers.
- Hong, G. and J. McLaren (2015, April). Are immigrants a shot in the arm for the local economy? *NBER Working Paper 21123*.
- ILO (2020, October). Fair employment conditions for migrant workers in the eu—how to provide better support services for migrants?
- Ingwersen, K. and S. L. Thomsen (2021). The immigrant-native wage gap in germany revisited. *The Journal of Economic Inequality* 19(4), 825–854.
- Jaeger, D. A., J. Ruist, and J. Stuhler (2018). Shift-share instruments and the impact of immigration. Technical report, National Bureau of Economic Research.
- LaLonde, R. J., R. H. Topel, et al. (1991). Labor market adjustments to increased immigration. *Immigration, trade, and the labor market*, 167–200.
- Lange, M. and K. Sommerfeld (2022). Causal effects of immigration on crime: Quasi-experimental evidence from a large inflow of asylum seekers. Technical report.
- Manacorda, M., A. Manning, and J. Wadsworth (2012). The impact of immigration on the structure of wages: theory and evidence from britain. *Journal of the European economic association* 10(1), 120–151.
- Monras, J. (2020). Immigration and wage dynamics: Evidence from the mexican peso crisis. *Journal of Political Economy* 128(8), 3017–3089.
- Montiel Olea, J. L. and C. Pflueger (2013). A robust test for weak instruments. *Journal of Business & Economic Statistics* 31(3), 358–369.
- Ottaviano, G. I. and G. Peri (2012). Rethinking the effect of immigration on wages. *Journal of the European economic association* 10(1), 152–197.
- Ottaviano, G. I., G. Peri, and G. C. Wright (2013). Immigration, offshoring, and american jobs. *American Economic Review* 103(5), 1925–59.
- Peri, G. (2012). The effect of immigration on productivity: Evidence from us states. *Review of Economics and Statistics* 94(1), 348–358.
- Peri, G. and C. Sparber (2009). Task specialization, immigration, and wages. *American Economic Journal: Applied Economics* 1(3), 135–69.
- Schneider, H. R. et al. (2019). The labor market in germany, 2000–2018. *IZA World of Labor*.
- Tanis, K. (2020). Entwicklungen in der wohnsituation geflüchteter. Kurzanalyse 05—2020, Forschungszentrums Migration, Integration und Asyl des Bundesamtes für Migration und Flüchtlinge.
- Tumen, S. (2016). The economic impact of syrian refugees on host countries: Quasi-experimental evidence from turkey. *American Economic Review* 106(5), 456–60.
- UNHCR (2018). Refugee situations - mediterranean situation: Operational portal.
- Verme, P. and K. Schuettler (2021). The impact of forced displacement on host communities: A review of the empirical literature in economics. *Journal of Development Economics* 150, 102606.
- Vertier, P., M. Viskanac, and M. Gamalerio (2022). Dismantling the ‘jungle’: Migrant relocation and extreme voting in france. Available at SSRN 2963641.

- Weber, J. (2022). Binnenmobilität von geflüchteten mit schutzstatus in deutschland: eine explorative analyse auf basis des ausländerzentralregisters. (Forschungsbericht 39).
- Yagan, D. (2019). Employment hysteresis from the great recession. *Journal of Political Economy* 127(5), 2505–2558.

A Additional Figures and Tables

A.1 Asylum Seekers Benefits

By the Asylum Seekers Benefits Act (*Asylbewerberleistungsgesetz*), asylum-seekers are entitled to social benefits until they receive a decision on their application. These benefits are usually granted in-kind while still residing in an IRF and mainly in cash while in the follow-up accommodation. A single adult (without children) or a single parent received around 360€ worth of monthly benefits (excluding housing and health insurance). Once a positive decision is granted (recognized refugees, subsidiary protected, and persons with a national ban on deportation), they fall under SGB II or SGB XII and receive unemployment benefit II. Hence, being entitled to the same social benefits as any other German national. For this, they need to register at their local employment agency (Job Center) and are usually required to participate in training courses (*Aktivierungsmaßnahmen*).

A.2 Employment of Refugee Origin Workers

We describe the employment of refugees using data from the Federal Employment Agency as of 2019. Since this is administrative data, it is the most reliable to describe employment statistics of refugee-origin workers. However, these data have some drawbacks. First, the administrative data on employment does not distinguish legal status, i.e. we cannot know whether a worker is a refugee or an asylum-seeker but only the country of origin. Second, this data is lacking information on the arrival date, thus mixing early with late arrivals. Third, it shows a selected sample of immigrants from refugee-origin countries, namely those who are already registered with the Employment Agency or have taken up employment. However, since registration at the Employment Agency is needed for receiving social benefits, this caveat might play a minor role. Table A.1 shows the employment rates for all workers from the top 8 asylum-seeking countries by nationalities and the share of those workers employed in low, medium and high skilled jobs.³⁴

³⁴The skill levels correspond to the jobs performed. The German names are "Helfer" (low skilled), "Fachkraft" (medium skilled), and "Spezialist/Experte" (high skilled).

Table A.1: Employment rates and job skill levels (July - August 2019)

	(1)	(2)	(3)	(4) (5) (6)		
	Population in working age	# Workers	Emp. Rate (%)	Type of job skill (%)		
				Low	Medium	High
All top 8	1,045,107	362,652	34.7	45.2	45.1	9.5
Eritrea	58,789	28,454	48.4	68.0	30.4	1.6
Pakistan	54,577	24,669	45.2	40.8	41.2	18.0
Iran	88,068	36,196	41.1	26.7	46.0	27.0
Nigeria	46,820	18,494	39.5	62.3	31.0	6.6
Afghanistan	175,053	65,820	37.6	41.7	54.4	3.8
Somalia	33,900	11,831	34.9	69.4	28.5	1.9
Iraq	149,131	45,634	30.6	49.0	45.6	5.1
Syria	431,325	131,554	30.5	42.2	47.3	10.4

Notes: Column (1) shows the absolute number of working age population by nationalities, column (2) the number of workers, and column (3) the employment rate. Source: [Federal Employment Agency \(2019b,a\)](#)

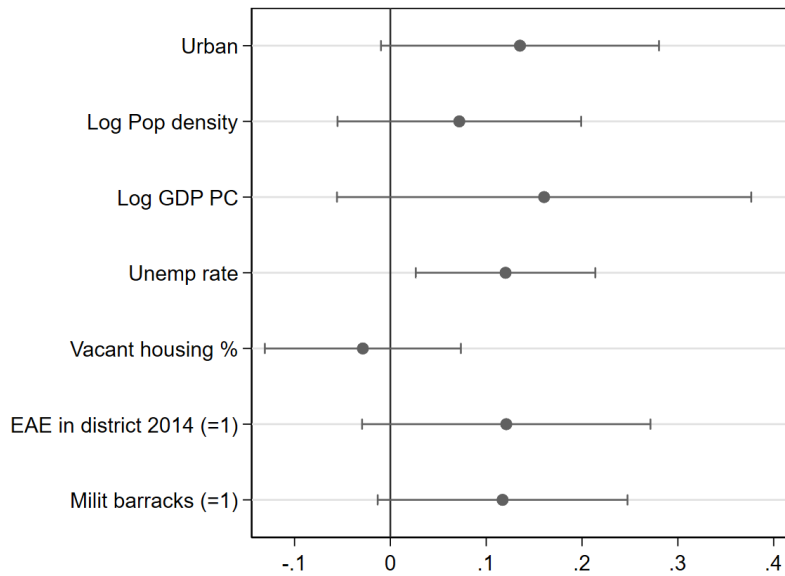
Table A.2: Occupation Groups - Refugee Origin Workers

Classification of occupations (KldB 2010)	% of all refugee orig. workers	% of all workers
Transport, Logistics, Safety and Security	32.24	2.59
Raw Material Extraction, Production and Manufacturing	27.61	1.37
Commercial services, trade in goods, sales, hotel and tourism	12.68	1.19
Health, social affairs, teaching and education	12.66	1.15
Construction, architecture, surveying and building technology	6.55	0.74
Business organization, accounting, law and administration	3.59	0.74
Natural Science, Geography and Informatics	2.63	0.71
Agriculture, forestry, animal husbandry, horticulture	0.97	0.35
Humanities, social sciences, media, culture, design	0.85	0.19

Notes: The table displays the occupation groups where refugee origin workers worked in 2019. The columns show the percentages relative to all refugee origin workers and relative to all workers.

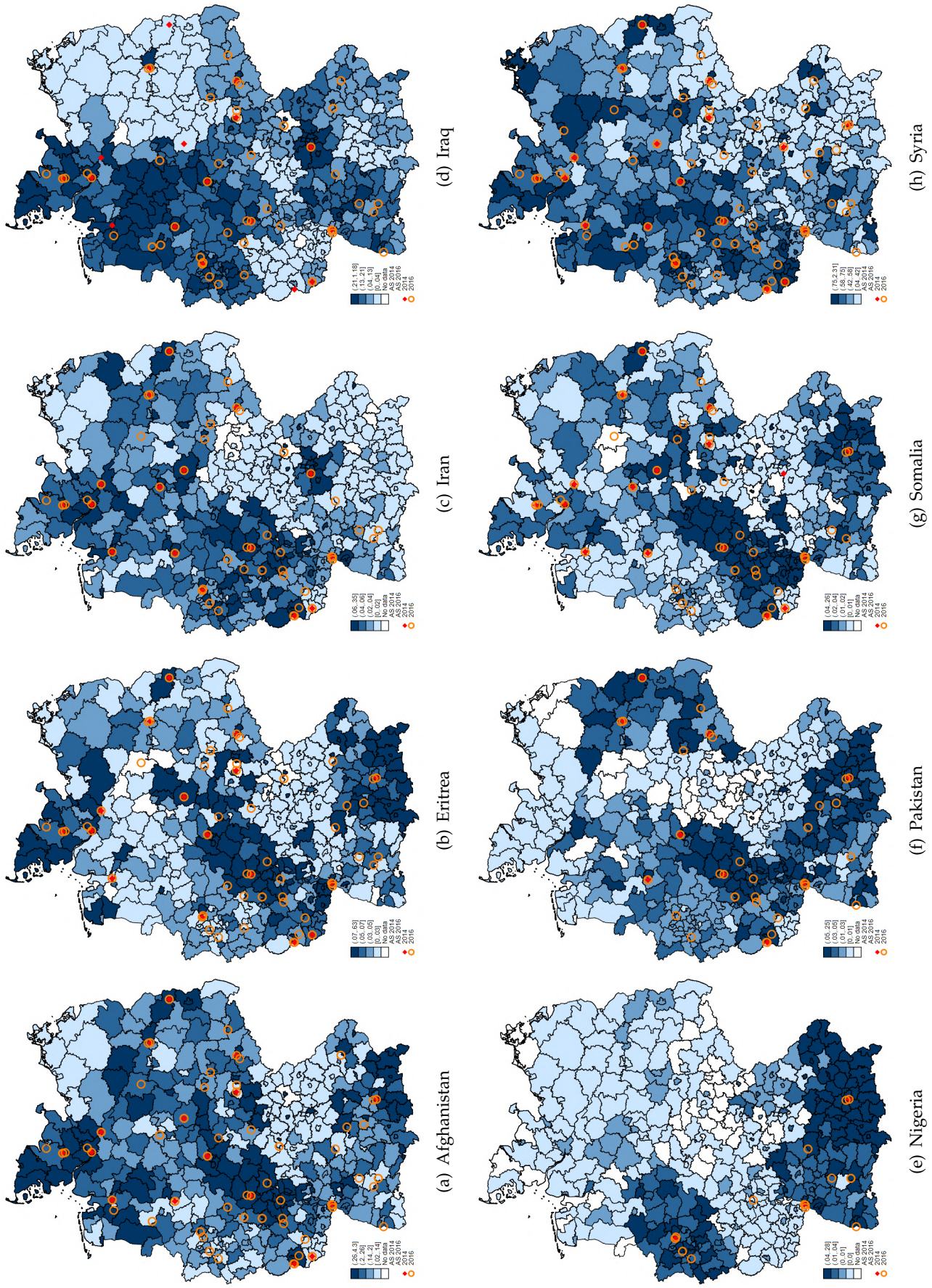
A.3 Figures

Figure A.1: Balance Test: Refugee arrivals (2014–2016) and district covariates (in 2011)



Notes: The graph shows standardised beta coefficients with 95%-confidence intervals of a regression of our main explanatory variable (inflow of refugees between 2014–2016) on pre-treatment covariates (measured in 2011). Only the coefficient for the unemployment rate is statistically significant at the 5% level. Other—a priori—more relevant covariates such as the presence of a military barrack, an IRE, or the predicted arrival share (using the established allocation quotas) do not have a statistically significant correlation with our main explanatory variable. Standard errors are clustered at the district level. *Source:* BAMF, Destatis. Own graph.

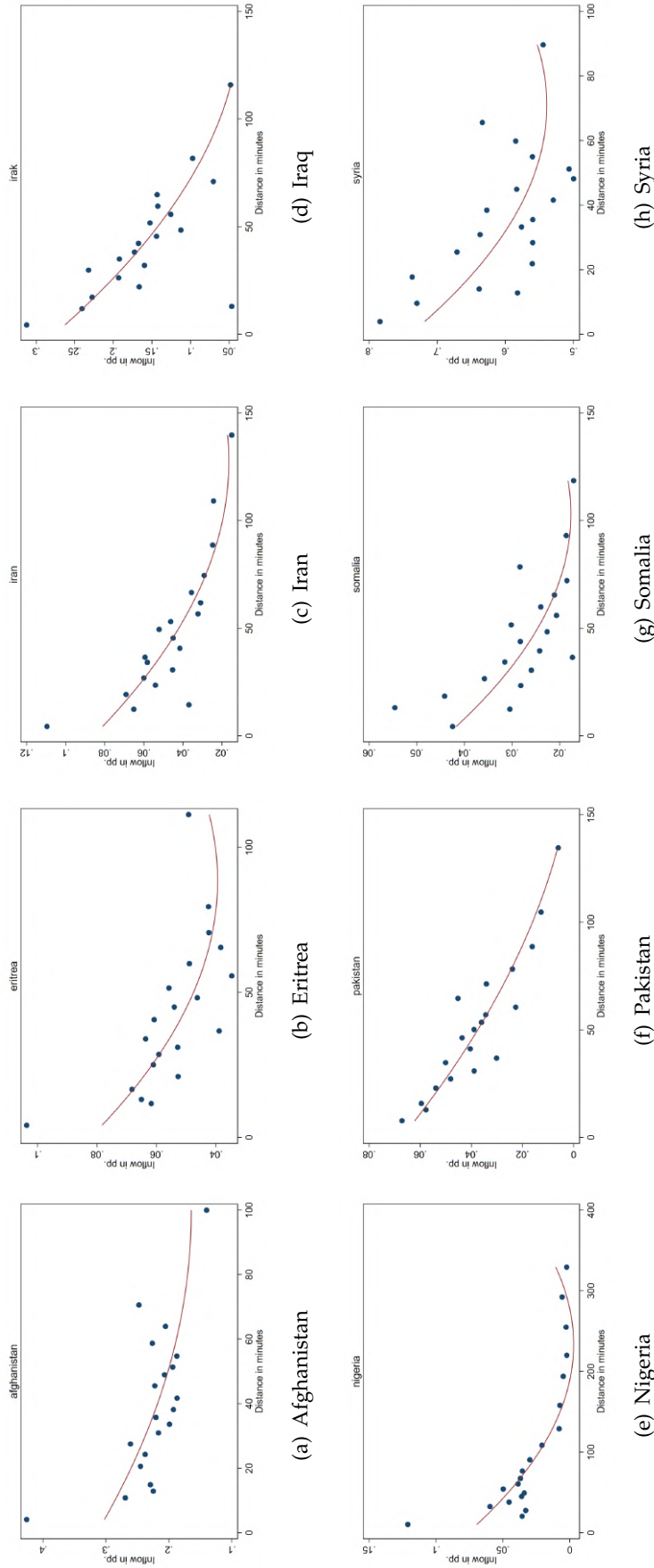
Figure A.2: Arrivals of Refugees from top 8 Nationalities during 2014–2016 and BAMF Branch Offices in 2014 and 2016



Source: AZR, BAMF

Notes: The maps show the share of arrivals during 2014–2016 as a percentage of all residents in a district in 2011. The red diamonds show the location of the BAMF branch offices in 2014 and the orange circles the branch offices in 2016, which were responsible for the indicated nationalities.

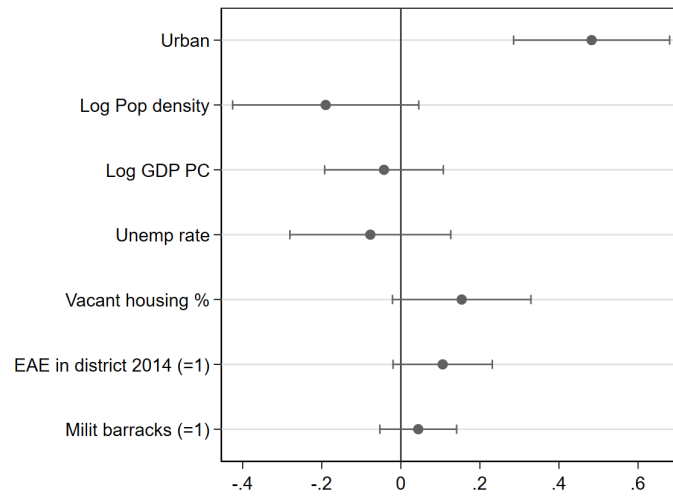
Figure A.3: Binned scatterplots: Refugee Arrivals as Population Share 2014–2016 and Distance to the Closest Responsible BAMF Branch Office in 2016



Source: BAMF

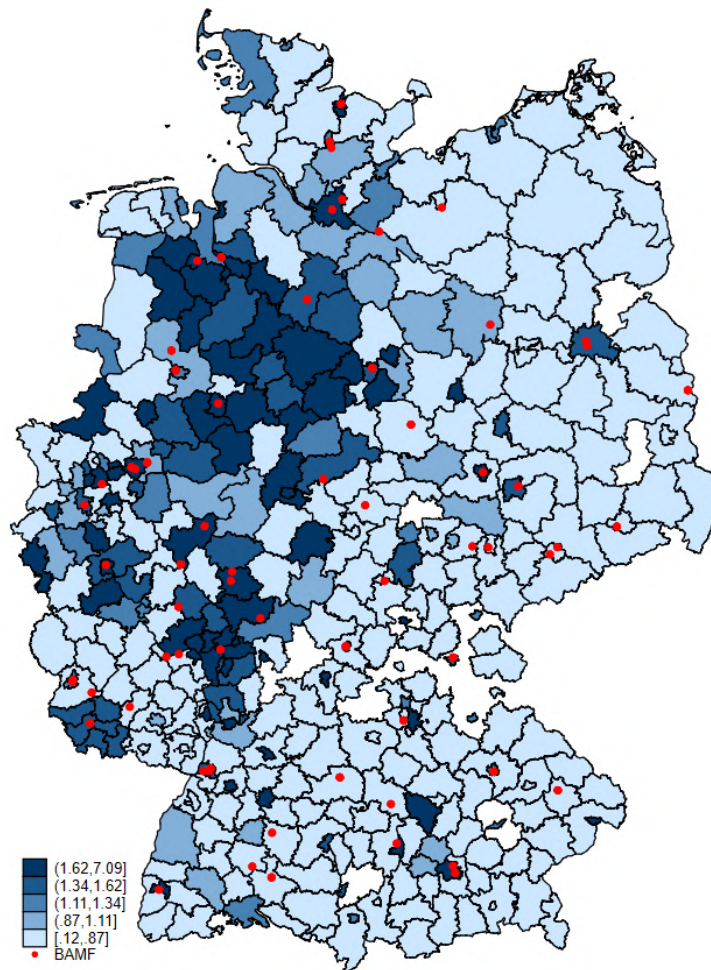
Notes: The figures show binned scatterplots and a quadratic fit from the arrivals of each top 8 refugee-origin country between 2014–2016 by districts, grouped into 20 equal-sized bins. The x-axis shows the travel distance in minutes between the centroid of a district and the closest BAMF branch office by nationality. The bins are weighted by the total population in the district in 2011. Source: BAMF. Own depiction.

Figure A.4: District Characteristics as Predictors of our Instrument



Notes: The graph shows standardized beta coefficients with 95%-confidence intervals of a regression of our distance based instrument on pre-treatment covariates (measured in 2011). Standard errors are clustered at the district level.
 Source: BAMF, Destatis. Own graph.

Figure A.5: Past Settlement IV and BAMF Branch Offices



A.4 Tables

Table A.3: Summary statistics for low, medium and high skilled Germans

	All	Low-skilled	Medium-skilled	High-skilled
Age (in years)	41.37 (10.460)	36.000 (11.770)	41.700 (10.440)	41.830 (9.530)
Experience (in years)	14.43 (9.390)	8.310 (9.640)	15.300 (9.430)	12.920 (8.050)
Job tenure (in years)	7.490 (7.470)	6.130 (8.150)	7.830 (7.690)	6.360 (6.150)
Education, no Abitur nor vocational train.	0.060 (0.240)	1.000 .	.	.
Vocational training and/or Abitur	0.760 (0.430)	.	1.000 .	.
College education	0.180 (0.390)	.	.	1.000 .
Average individual wage (2011-2013)	123.030 (58.040)	89.750 (30.890)	108.830 (44.140)	181.530 (68.980)
Real wage in 2019 (in 2015€)	141.640 (65.310)	104.990 (36.530)	125.930 (49.950)	206.310 (78.050)
Analytical non-routine	27.040 (18.960)	16.900 (14.340)	23.650 (17.190)	42.190 (18.670)
Interactive non-routine	12.890 (15.490)	6.830 (12.360)	12.010 (14.860)	17.320 (17.400)
Cognitive routine	30.740 (18.470)	24.020 (16.000)	30.850 (18.160)	31.320 (19.820)
Manual routine	11.030 (18.030)	21.910 (22.140)	12.590 (18.900)	3.170 (9.100)
Manual non-routine	18.290 (23.340)	30.340 (25.980)	20.900 (24.080)	6.000 (13.550)
Observations	450,554	27,565	340,294	81,802

Notes: The top panel shows the control variables for all the sample and by skill-levels. All of these variables are as of 2013 (baseline). The bottom panel shows the outcome variables in 2019.

Table A.4: BAMF responsibilities by nationalities and share of immigrants pre-treatment

	Afghanistan	Eritrea	Irak	Iran	Nigeria	Pakistan	Somalia	Syria	All
	(1)	(2)	(3)	(4)	(5)	(6)	(7)	(8)	(9)
Share of nationals in d	0.816*** (0.222)	-0.026 (1.478)	-0.642* (0.288)	1.244 (0.804)	3.575* (1.771)	0.045 (0.482)	-1.069 (1.833)	0.754 (0.685)	0.210 (0.167)
R^2	0.249	0.231	0.254	0.222	0.231	0.186	0.222	0.250	0.255
N	394	394	394	394	394	394	394	394	394
Covariates	Yes	Yes	Yes	Yes	Yes	Yes	Yes	Yes	Yes

Notes: Each column represent the responsibility of a BAMF branch-office for each particular country of origin in a district. Covariates include a dummy for urban, log GDP per capita, log population density, unemployment rate, and female share. All variables as of december 2011.

Table A.5: Main results for all employment outcomes, all workers in SIAB 2013

	2011	2012	2013	2014	2015	2016	2017	2018	2019
Full-time emp (OLS)	-0.0016 (0.0012)	-0.0022** (0.0010)	.	0.0001 (0.0008)	0.0023** (0.0010)	0.0029** (0.0012)	0.0030* (0.0016)	0.0034** (0.0015)	0.0047** (0.0016)
N	477205								
Full-time emp (2SLS)	0.0006 (0.0024)	-0.0017 (0.0019)	.	0.0021 (0.0019)	0.0100** (0.0032)	0.0059* (0.0031)	0.0072* (0.0040)	0.0061** (0.0029)	0.0072** (0.0036)
KP F-stat	21.8563								
N	477205								
Employed (w/o vocational)	0.0001 (0.0037)	-0.0038 (0.0038)	.	0.0009 (0.0022)	0.004 (0.0032)	-0.0012 (0.0037)	0.000 (0.0034)	0.0012 (0.0041)	0.0025 (0.0044)
KP F-stat	21.8563								
N	477205								
Employed all	-0.0018 (0.0034)	-0.0046 (0.0032)	.	0.0014 (0.0023)	0.0033 (0.0033)	-0.0027 (0.0039)	-0.0017 (0.0036)	-0.0008 (0.0043)	0.0008 (0.0046)
KP F-stat	21.8563								
N	477205								
Part-time emp.	-0.0012 (0.0026)	-0.0023 (0.0024)	.	-0.001 (0.0018)	-0.0059** (0.0026)	-0.0071** (0.0025)	-0.0072** (0.0037)	-0.0054* (0.0032)	-0.0044 (0.0037)
KP F-stat	21.8563								
N	477205								
Not employed	-0.0003 (0.0034)	-0.0005 (0.0023)	.	-0.0012 (0.0020)	-0.0009 (0.0020)	-0.0008 (0.0023)	-0.0022 (0.0021)	-0.0015 (0.0025)	-0.0029 (0.0029)
KP F-stat	21.8563								
N	477205								

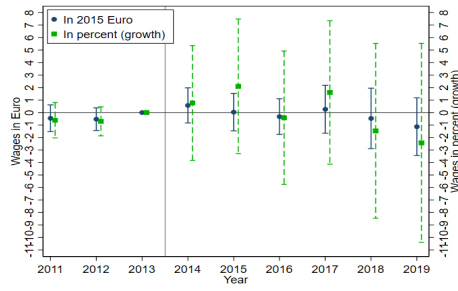
Notes: This table shows the results for coefficients for β_t of equation 1 for the years 2011–2019. The outcome are all different employment dummies (stated on the left): full-time employment, any employment (without vocational training), part-time employment, and non-employment. The top panel shows the results for an OLS estimation on the full-time dummy, the following panels show the results for the 2SLS estimates for all employment outcomes. The results are estimated on the main sample, i.e., for all individuals who appeared in SIAB in 2013. *** $p < 0.01$, ** $p < 0.05$, * $p < 0.1$

Table A.6: Main results for full-time employment, by employment subsamples

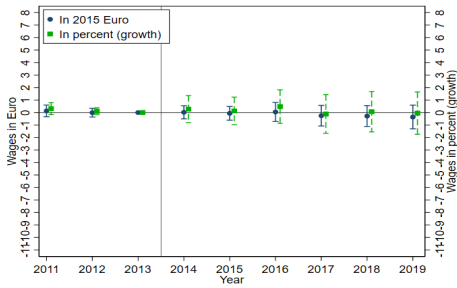
	2011	2012	2013	2014	2015	2016	2017	2018	2019
All in SIAB	0.0006 (0.0024)	-0.0017 (0.0019)	.	0.0021 (0.0019)	0.0100** (0.0032)	0.0059* (0.0031)	0.0072* (0.0040)	0.0061** (0.0029)	0.0072** (0.0036)
KP F-stat					21.8563				
N					477205				
Any employment	0.0003 (0.0027)	-0.0014 (0.0021)	.	0.0034 (0.0024)	0.0115** (0.0038)	0.0075** (0.0035)	0.0102** (0.0048)	0.0090** (0.0034)	0.0100** (0.0041)
KP F-stat					20.5791				
N					424284				
Full-time emp.	-0.0031 (0.0056)	-0.0041 (0.0042)	.	0.0058* (0.0031)	0.0105** (0.0041)	0.006 (0.0047)	0.0087 (0.0054)	0.0108** (0.0048)	0.0088 (0.0054)
KP F-stat					20.4372				
N					303977				
Part-time emp.	-0.0045 (0.0036)	-0.0016 (0.0030)	.	-0.0047 (0.0035)	0.003 (0.0036)	-0.0004 (0.0049)	-0.0028 (0.0054)	-0.0089 (0.0072)	-0.0034 (0.0081)
KP F-stat					20.787				
N					98795				
Unemployed	0.0017 (0.0034)	-0.003 (0.0030)	.	-0.0043 (0.0047)	0.0022 (0.0052)	-0.0021 (0.0059)	-0.008 (0.0057)	-0.0083 (0.0070)	-0.0069 (0.0072)
KP F-stat					30.4521				
N					52921				
Imputed non-employed + unemployed	-0.0148** (0.0067)	-0.0101* (0.0057)	.	0.0019 (0.0041)	0.0014 (0.0051)	-0.0033 (0.0054)	-0.0043 (0.0058)	-0.0055 (0.0064)	-0.0023 (0.0065)
KP F-stat					26.6353				
N					105162				

Notes: This table shows the results for coefficients for β_t of equation 1 for the years 2011–2019. The outcome is a dummy equal to one if the individual is full-time employed. The top panel shows the main results, the following panels show the results for different subsamples by employment status in 2013. *** $p < 0.01$, ** $p < 0.05$, * $p < 0.1$

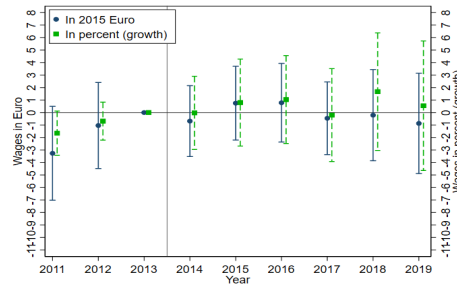
Figure A.6: Wage changes by skill groups



(a) Low-skilled



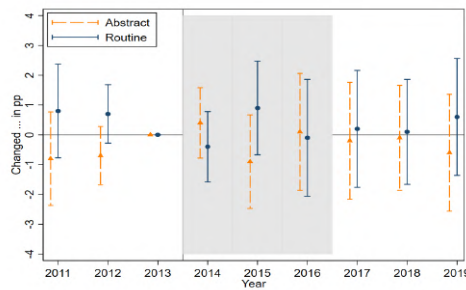
(b) Medium-skilled



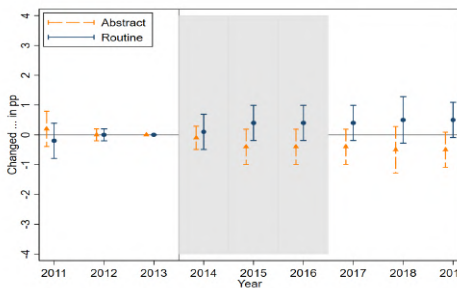
(c) High-skilled

Notes: The graphs show the IV coefficients for $\beta_t * 100$ from equation 1 and corresponding 95% confidence intervals for the yearly regressions using as outcomes changes in wages (in 2015 Euros and in percent change), by skill-levels.

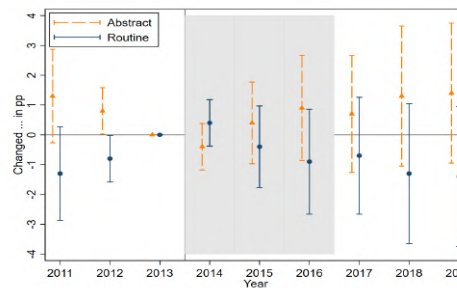
Figure A.7: Change in main task component of the job by skill groups



(a) Low-skilled



(b) Medium-skilled



(c) High-skilled

Notes: The graphs show the IV coefficients for $\beta_t * 100$ from equation 1 and corresponding 95% confidence intervals for the yearly regressions using as outcomes changes in the job's main task, by skill-levels. We grouped analytical non-routine and interactive tasks as "abstract", and cognitive routine, and manual (routine and non-routine) tasks as "routine".

Table A.7: Heterogeneities for the full-time employment outcome, by wage-deciles pre-treatment

	2011	2012	2013	2014	2015	2016	2017	2018	2019
Wage dec 1	-0.004 (0.003)	-0.004 (0.003)	.	0.003 (0.004)	0.003 (0.005)	-0.004 (0.005)	-0.007 (0.006)	-0.006 (0.006)	-0.008 (0.007)
KP F-stat					41599				
N					30.8754				
Wage dec 2	0.011 (0.007)	0.001 (0.004)	.	0.007 (0.010)	0.020 * (0.011)	0.009 (0.011)	0.016 * (0.010)	0.01 (0.013)	0.017 (0.011)
KP F-stat					42525				
N					23.6671				
Wage dec 3	0.012 (0.012)	-0.001 (0.008)	.	-0.002 (0.006)	-0.001 (0.009)	0.003 (0.009)	0.002 (0.011)	0.001 (0.011)	0.01 (0.011)
KP F-stat					46250				
N					26.5176				
Wage dec 4	-0.008 (0.011)	-0.009 (0.009)	.	0.021 * (0.009)	0.015 * (0.009)	0.008 (0.011)	-0.008 (0.011)	-0.005 (0.012)	-0.006 (0.012)
KP F-stat					47660				
N					22.9383				
Wage dec 5	0.009 (0.008)	0.003 (0.007)	.	-0.007 (0.006)	0.009 (0.008)	-0.003 (0.007)	0.004 (0.011)	0.004 (0.009)	0.013 (0.009)
KP F-stat					48526				
N					23.1667				
Wage dec 6	0.003 (0.010)	0.003 (0.007)	.	0.004 (0.007)	0.011 (0.009)	0.007 (0.008)	0.014 (0.012)	0.014 (0.012)	0.001 (0.013)
KP F-stat					48997				
N					20.3493				
Wage dec 7	-0.002 (0.007)	-0.005 (0.005)	.	-0.007 (0.005)	0.009 (0.007)	-0.001 (0.008)	0.004 (0.010)	0.008 (0.009)	0.009 (0.009)
KP F-stat					50011				
N					21.1784				
Wage dec 8	-0.003 (0.009)	0.005 (0.005)	.	0.004 (0.006)	0.013 (0.008)	0.015 (0.010)	0.014 (0.012)	0.005 (0.011)	0.009 (0.013)
KP F-stat					50199				
N					17.2043				
Wage dec 9	-0.018 ** (0.008)	-0.003 (0.005)	.	0.008 (0.006)	0.021 ** (0.008)	0.022 ** (0.009)	0.017 * (0.010)	0.019 ** (0.009)	0.016 * (0.010)
KP F-stat					50662				
N					18.0569				
Wage dec 10	0.003 (0.006)	-0.005 (0.008)	.	0.01 (0.006)	0.009 (0.007)	0.008 (0.008)	0.019 ** (0.010)	0.011 (0.012)	0.013 (0.011)
KP F-stat					51350				
N					11.9131				

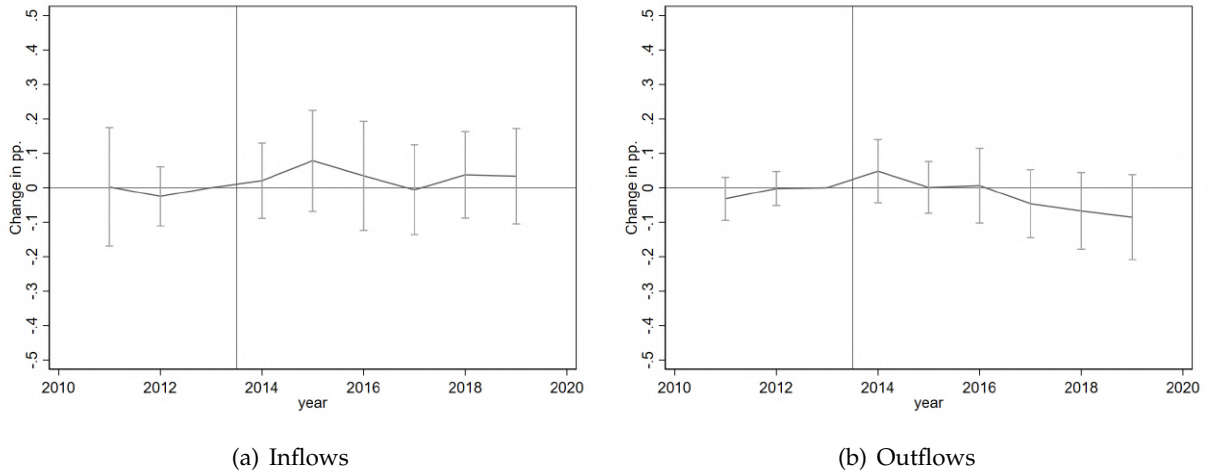
Notes: The table displays the effects on full-time employment for all workers by wage deciles (pre-treatment). Hence, those unemployed will be part of wage decile 1.

Table A.8: Robustness: Results using different variations of the instrument and covariates

	2011	2012	2013	2014	2015	2016	2017	2018	2019
Main results (2 dig WZ)	0.001 (0.003)	-0.001 (0.002)	.	0.002 (0.002)	0.011 ** (0.004)	0.006 * (0.003)	0.009 * (0.004)	0.007 ** (0.003)	0.008 ** (0.004)
F-stat	21.0299								
Using 2014 distances	0.001 (0.003)	-0.002 (0.002)	.	0.003 (0.003)	0.009 ** (0.004)	0.011 ** (0.005)	0.011 * (0.007)	0.009 ** (0.004)	0.011 ** (0.005)
F-stat	14.9797								
Using EASY shift	0.005 (0.003)	0.002 (0.003)	.	0.003 (0.003)	0.013 ** (0.005)	0.006 (0.004)	0.009 * (0.005)	0.005 (0.004)	0.006 (0.004)
F-stat	13.6365								
Adding more covars	-0.001 (0.002)	-0.003 (0.002)	.	0.002 (0.002)	0.012 ** (0.004)	0.007 (0.004)	0.010 ** (0.005)	0.009 ** (0.004)	0.010 ** (0.004)
F-stat	20.6204								
N	450,131								
Main results (1 dig WZ)	0.001 (0.003)	-0.001 (0.002)	.	0.003 (0.002)	0.012 ** (0.004)	0.007 * (0.004)	0.009 * (0.005)	0.008 ** (0.004)	0.009 ** (0.004)
F-stat	20.911								
N	450,473								

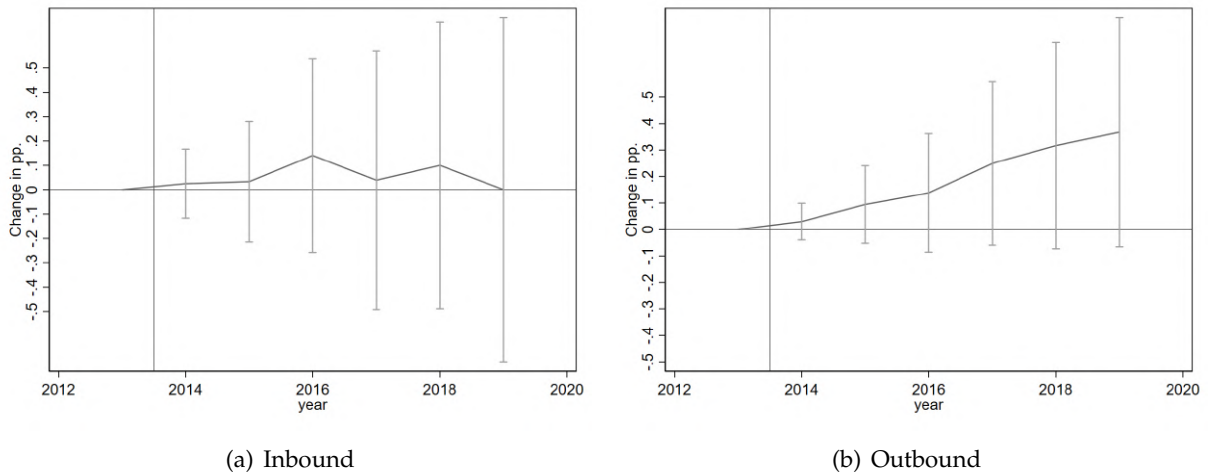
Notes: This table shows the results for coefficients for β_t of equation 1 for the years 2011–2019. The upper panel shows our main results using the distances to the 2016 BAMF offices, while the bottom panel uses the 2014 BAMF offices. Statistically significant at *** $p < 0.01$, ** $p < 0.05$, * $p < 0.1$

Figure A.8: Migration across district borders



Notes: The graphs show the IV coefficients for β_t from equation 1 and 95% confidence intervals for the yearly regression. We run the regressions using district-level data. The outcome variables are inflows and outflows from German citizens relative to the district's population in 2011. The regressions are weighted by the total population in the district in 2011. Source: Destatis.

Figure A.9: Commuter flows



Notes: The graphs show the IV coefficients for $\beta_t * 100$ from equation 1 and 95% confidence intervals for the yearly regression. We run the regressions using district-level data. The outcome variables are inbound and outbound commuters who are German citizens relative to the district's population in 2011. The regressions are weighted by the total population in the district in 2013 since the data on commuter flows is only available since this year. Source: Bundesagentur für Arbeit - Statistik.