

Labor Market Effects of Monetary Policy Across Workers and Firms*

Andreas Gulyas

Matthias Meier

Mykola Ryzhenkov

February 2023

Abstract

This paper uses Austrian social security records to analyze the effects of ECB monetary policy on the labor market. Our focus is on the role of worker and firm wage-components, defined by an [Abowd et al. \(1999\)](#) wage regression. Our findings show that monetary tightening causes the largest employment losses for low-paid workers who are employed in high-paying firms before the tightening. Monetary tightening further causes a reallocation of workers to lower-paying firms. In particular low-paid workers who were originally employed in low-paying firms are prone to falling down the firm wage ladder.

Keywords: Monetary policy, worker reallocation, heterogeneity, AKM.

JEL Codes: E24, E32, E52.

*Andreas Gulyas (University of Mannheim): andreas.gulyas@gmail.com. Matthias Meier (University of Mannheim): m.meier@uni-mannheim.de. Mykola Ryzhenkov (University of Mannheim and European Central Bank): mykola.ryzhenkov@uni-mannheim.de. We thank Klaus Adam, Antoine Camous, Jose Garcia-Louzao, as well as participants at various seminars and conferences for helpful comments. Support by the state of Baden-Württemberg through bwHPC and the German Research Foundation (DFG) through grant INST 35/1134-1 FUGG and through CRC TR 224 (Project A3 and Project C05) is gratefully acknowledged. Matthias Meier acknowledges financial support from the UniCredit & Universities Foundation. Mykola Ryzhenkov acknowledges financial support from the the German Research Foundation (DFG) and Deutsche Bundesbank. The views expressed in this article are solely the responsibility of the authors, and should not be interpreted as reflecting the views of the ECB or the Eurosystem.

1 Introduction

The distributional effects of monetary policy are both of direct concern for policymakers and important for the transmission of monetary policy.¹ In fact, a growing empirical literature studies the distributional effects of monetary policy across workers and firms.² However, understanding how the worker-level effects of monetary policy depend on both the worker type *and* the worker’s firm type remains largely unexplored.

A key aspect of worker and firm heterogeneity is that they jointly determine the worker’s wage. Wages depend on worker-specific components (e.g., worker productivity) and firm-specific components (e.g., firm profitability). Therefore, the distribution of workers across firms matters for earnings inequality (e.g., [Bagger and Lentz, 2018](#); [Song et al., 2018](#); [Bonhomme et al., 2019, 2022](#)), productive efficiency (e.g., [Hagedorn et al., 2017](#)), and earnings losses (e.g., [Gulyas and Pytka, 2019](#); [Lachowska et al., 2020](#); [Bertheau et al., 2022](#)). In addition, worker and firm type determine jointly whether a worker-firm match is sustained. Importantly, it is *ex ante* unclear to what extent worker and firm-specific characteristics explain why some workers are more affected by monetary policy.

In this paper, we empirically characterize the distributional effects of ECB monetary policy shocks across workers and firms using Austrian social security records. Using an [Abowd et al. \(1999\)](#) wage regression, we estimate worker and firm (wage) fixed effects. From a worker’s perspective, the firm fixed effect is arguably the most important aspect of firm heterogeneity, as it measures the firm wage premium relative to other firms. We refer to workers with a high worker fixed effect as high-paid workers, and to firms with a high firm fixed effect as high-paying firms, and vice versa for low-paid workers and low-paying firms.

We document three novel results. First, we show that employment losses after monetary tightening are concentrated among low-paid workers in high-paying firms. Second, monetary tightening increases the rate at which workers reallocate across firms, in particular for low-paid workers. Third, the firms to which workers switch after monetary tightening tend to be lower-paying than their previous firms. Especially low-paid workers who were originally employed in low-paying firms reallocate to (even) lower-paying firms. All results apply symmetrically to expansionary monetary policy.

While our finding that low-paid workers are more affected by monetary policy is in line with the previous literature (quoted above), the novelty of our results is the role of the worker’s

¹See, e.g., [McKay et al. \(2016\)](#), [Kaplan et al. \(2018\)](#), [Auclert \(2019\)](#), [Gornemann et al. \(2021\)](#).

²See, e.g., [Coibion et al. \(2017\)](#), [Holm et al. \(2021\)](#), [Broer et al. \(2021\)](#), [Andersen et al. \(forthcoming\)](#), [Amberg et al. \(2022\)](#), [Lenza and Slacalek \(2022\)](#), [Moser et al. \(2022\)](#) on the heterogeneous effects of monetary policy across workers and [Gertler and Gilchrist \(1994\)](#), [Bahaj et al. \(2019\)](#), [Ottonello and Winberry \(2020\)](#), [Meier and Reinelt \(2022\)](#) on the heterogeneous effects across firms.

original employer for the distributional effects of monetary policy. While low-paid workers at high-paying firms tend to become non-employed, low-paid workers at low-paying firms tend to reallocate to lower-paying firms. Although a large literature studies heterogeneous effects of monetary policy across workers *or* firms, jointly studying worker and firm heterogeneity has been largely ignored. An exception is [Moser et al. \(2022\)](#) which estimates the distributional effects of lower credit supply due to negative interest rates on employment and pay both within and between firms. Another closely related paper is [Crane et al. \(2022\)](#) which studies the effects of recession across both worker and firm ranks.

Our analysis builds on the universe of Austrian social security records which includes a worker identifier, an establishment identifier, the start and end dates of employment and registered unemployment spells, the wage, and a few other worker characteristics. We use these records to construct a quarterly worker-level panel with 200 million observations between 1999 and 2018. We combine the worker panel with high-frequency identified ECB monetary policy shocks ([Altavilla et al., 2019](#); [Jarociński and Karadi, 2020](#)). To characterize the distributional effects of monetary policy we estimate worker-level panel local projections.

Our main findings show statistically and economically significant heterogeneity in the employment effects of monetary policy across workers and firms. Across all workers, the average employment probability is 0.27 percentage points (p.p.) lower one year after a one-standard deviation contractionary monetary policy shock, and vice versa for an expansionary shock. The average, however, masks large differences across workers. For workers with an above-median worker fixed effect, the employment probability falls by 0.23 p.p., while for workers with a below-median worker fixed effect the employment probability falls by 0.32 p.p. That is, low-paid workers are 40% more likely to become non-employed than high-paid workers. However, only examining the role worker fixed effects misses large differences across firm fixed effects. Perhaps surprisingly, among the low-paid workers, those originally employed at high-paying firms are particularly likely to become non-employed. Their employment probability falls 0.36 p.p. Conversely, the employment probability of low-paid workers at low-paying firms only falls 0.18 p.p.

Monetary policy shocks not only affect the probability whether a worker is employed, but also induce reallocation of workers across firms. On average, a one standard deviation monetary policy shock increases the likelihood of changing employers by 0.2 p.p. Job switching is especially concentrated among low-paid workers. These workers are three times more likely than high-paid workers to change employers in response to a monetary policy shock. A natural question that arises is where workers reallocate to: Are workers moving to better paying, or worse paying employers? We find that across all workers switching employers, the average wage premium of firms falls by 0.16% after a one-standard deviation contractionary

monetary policy shock. In other words, workers reallocate to lower-paying firms. Interestingly, this reallocation response is fairly similar when comparing low-paid to high-paid workers, and when comparing workers at low-paying to those at high-paying firms. However, we do find large differences in the interaction of worker type and firm type. In particular, we find that low-paid workers originally employed by low-paying firms are disproportionately reallocating towards worse-paying firms. In contrast, low-paid workers originally employed by high-paying firms tend to reallocate to similar firm types.

Taken together, our results imply that contractionary monetary policy shocks especially hurt low paid workers in multiple dimensions. First it lowers their employment probability, especially for those originally employed at a high-paying firms. Second, even conditionally on re-employment, monetary policy induces a reallocation of low paid worker originally employed at worse-paying firms to even lower paying firms.

Our paper provides new empirical moments which can be useful for the further development of Heterogeneous Agent New Keynesian models. While our findings highlight the role of both worker and firm heterogeneity, existing models either feature only worker heterogeneity (e.g., [Gornemann et al., 2021](#); [Dolado et al., 2019](#); [Bergman et al., 2022](#); [Bhandari et al., 2021](#); [Ravn and Sterk, 2020](#)), or only firm heterogeneity (e.g., [Ottonello and Winberry, 2020](#); [Meier and Reinelt, 2022](#)). Instead, a New Keynesian model with two-sided heterogeneity would allow studying the positive and normative implications of our evidence.

The paper is organized as follows: Section 2 describes the data. Section 3 provides evidence on the employment effects to monetary policy. Section 4 provides evidence on the reallocation effects of monetary policy. Section 5 provides a sensitivity analysis. Section 6 concludes.

2 Data

In this section, we describe the data and key variables used in our analysis.

2.1 Austrian Social Security Data

We use administrative data from the Austrian social security administration that cover the universe of administrative employment and unemployment records for all workers subject to social security from 1999 through 2018.³ The data include a worker identifier, an establishment identifier, the first and last day of employment and unemployment spells, the worker’s age, and the establishment’s industry classifier. In the data, we observe only the establish-

³All private sector jobs are subject to social security except self-employed individuals. The data also include many public sector jobs except civil servants (“Beamte”), see [Zweimüller et al. \(2009\)](#) for details.

ment a worker is employed at, but not the firm. At the same time, most establishments are owned by one-establishment firms. For simplicity, we will refer to establishments as firms in the remainder of the paper. For every worker-firm match, we observe annual labor income. On average, we observe 2.7 million workers per year.

We construct a worker panel based on which we estimate worker-level responses to monetary policy shocks. In theory, we could construct a daily panel, since both social security data and monetary policy shocks are available at a daily frequency. Such a panel, however, would include 20 billion observations rendering the regression analysis extremely burdensome if not infeasible. Furthermore, given the presence of various labor market frictions and the typically sluggish response of macroeconomic aggregates to monetary policy shocks we should not expect large employment responses at very short horizons. We therefore construct a quarterly worker panel. We focus on individuals with high labor force attachment by excluding workers below 26 and above 60 years old.⁴

Our sample only consists of employment spells subject to social security and registered unemployment spells.⁵ There are several reasons why a worker may disappear from our sample. A worker may drop out of the labor force, move outside of Austria, or find employment not covered by social security such as self-employment. In our analysis, we have to take a stance on how to define the employment status of workers who disappear from our dataset. We decide to only consider the employment and non-employment trajectories of workers who are either employed or registered as unemployed. We think of this choice as conservative, as we may underestimate the employment responses if workers are pushed outside of the labor force in response to monetary policy shocks.⁶ Our final panel has 213.9 million worker-quarter observations and Table 1 provides summary statistics. As we use the universe of all employment observations subject to social security, the descriptive statistics mirror the labor market structure of Austria.

2.2 Worker and Firm Fixed Effects

Our goal in this paper is to empirically characterize the distributional effects of ECB monetary policy shocks across the joint distribution of worker and firm types. We estimate worker and firm types using the seminal [Abowd et al. \(1999\)](#) wage regression (in short: AKM). In particular, we estimate worker and firm types through the fixed effects in the following annual

⁴In this step we lose around 36.6 mln observations - the original dataset contained around 250.5 mln observations. Section 5 shows that our main results are robust when including all individuals in our sample.

⁵Unemployment benefits are paid only for a specific amount of time. After running out of unemployment benefits, workers continue to receive benefits, although at a lower replacement rate, and are still observed as registered unemployed in our dataset.

⁶Our results are robust to coding workers that drop from our sample as non-employment, see Section 5.

Table 1: Descriptive statistics

	Mean	Min	P25	P75	Max	Obs
<i>Worker characteristics</i>						
Employment (0/1)	0.905	0	1	1	1	213,892,967
Age (in years)	41.6	26	34	49	60	213,892,967
Wage (in 2010€)	103.1	6.3	65.4	131.2	64249.8	193,650,934
<i>Labor market transitions</i>						
EE (0/1)	0.028	0	0	0	1	186,080,293
EU (0/1)	0.026	0	0	0	1	186,080,293
UE (0/1)	0.248	0	0	0	1	17,804,568
UU (0/1)	0.752	0	1	1	1	17,804,568
<i>Firm characteristics</i>						
Firm age (in years)	21.2	0	8	33	99	193,650,934
Firm size (employees)	1047.7	1	16	540	33222	193,650,934
<i>Worker and firm fixed effects</i>						
Worker fixed effect	0.020	-6.633	-0.199	0.249	2.958	193,650,934
Firm fixed effect	0.008	-5.147	-0.110	0.176	2.901	193,650,934
<i>Monetary policy</i>						
MP shock (in bp)	0.37	-21.26	-1.84	2.16	12.69	80

Note: This table provides descriptive statistics for our worker-level panel from 1991Q1 through 2018Q4. Workers are either employed (1) or unemployed (0). Wages are daily wages of employed workers. The labor market transitions are quarterly transitions from employment at one firm to another (EE), from employment to unemployment (EU) and vice versa (UE). The AKM fixed effects are expressed in log real wage units. MP shock describes our baseline shock series in basis points.

wage regression

$$wage_{i,j,\tau} = \mathbf{F}_{j(i,\tau)} + \mathbf{W}_i + \beta X_{i,\tau} + \varepsilon_{i,j,\tau}, \quad (2.1)$$

where $wage_{i,j,\tau}$ is the log daily wage of worker i , employed in firm j in year τ , $\mathbf{F}_{j(i,\tau)}$ is a firm fixed effect, \mathbf{W}_i is a worker fixed effect, and $X_{i,\tau}$ is a cubic polynomial of worker age. For each worker and year, we select the dominant employer according to total yearly income. Table 1 provides descriptive statistics of the worker and firm fixed effects.

The firm fixed effect $\mathbf{F}_{j(i,\tau)}$ for firm j is assumed to be invariant over time and is identified through wage changes of workers moving across firms.⁷ Theoretically it is possible that the

⁷The related literature has pointed out that few worker moving in some firms creates a limited mobility bias in the variance of firm fixed effects. However, we do study the variance of firm fixed effects but rather the point estimates, which are consistently estimated under limited mobility bias. Furthermore, [Bonhomme et al. \(2022\)](#) show that the AKM estimates in Austria are very similar to alternative methods of estimating worker and firm wage effects.

firm fixed effect is affected by monetary policy shocks. Although monetary policy are at least an order of magnitude smaller in standard deviation than idiosyncratic shocks to firms, to avoid endogeneity concerns, our analysis will mostly use the firm and worker fixed effects estimated from a backward-looking 5-year rolling window. We denote the estimated worker and firm fixed effects for the rolling windows by

$$\mathbf{W}_{i,\tau}^{rolling} \quad \text{and} \quad \mathbf{F}_{j(i,\tau),\tau}^{rolling}. \quad (2.2)$$

where the sample used to estimate $\mathbf{W}_{i,\tau}^{rolling}$ and $\mathbf{F}_{j(i,\tau),\tau}^{rolling}$ ranges from year $\tau - 4$ to τ . To be able to compare the rolling-window estimates over time, we compute the percentile rank of these fixed effects, which we denote by

$$\widetilde{\mathbf{W}}_{i,\tau}^{rolling} = \text{percentile} \left(\mathbf{W}_{i,\tau}^{rolling} \right) \quad \text{and} \quad \widetilde{\mathbf{F}}_{j(i,\tau),\tau}^{rolling} = \text{percentile} \left(\mathbf{F}_{j(i,\tau),\tau}^{rolling} \right). \quad (2.3)$$

When studying the reallocation of workers across firms, we need a constant measure of firm fixed effects over time. Thus, in Section 4 we will use the firm fixed effects estimated in (2.1) over the entire sample.

2.3 ECB Monetary Policy Shocks

We consider as ECB monetary policy shocks high-frequency changes in the Overnight Index Swap (OIS) rates around policy meetings of the ECB Governing Council. The OIS is a swap contract exchanging a fixed interest rate for the floating Euro Overnight Index Average (Eonia) on the European interbank market. We exclusively consider scheduled meetings, which mitigates the problem that monetary surprises may convey private central bank information about the state of the economy. The event window starts 10-20 minutes before the press release and ends 10-20 minutes after the press conference. Following [Jarociński and Karadi \(2020\)](#), we further use sign restrictions to separate information effects from conventional monetary policy shocks. The identifying restriction is that monetary policy shocks should move interest rates and stock prices in opposite directions, while central bank information moves them in the same direction.

Our baseline shock series is constructed from high-frequency changes in the 6-months ahead OIS rate provided by [Altavilla et al. \(2019\)](#).⁸ While surprises in the 3-month rate become minuscule during the ZLB episode, we observe non-negligible surprises in the 6-month rate throughout our sample. We aggregate the daily shocks into quarterly frequency. Daily shocks are assigned fully to the current quarter if they occur on the first day of the quarter.

⁸Our results are robust to using the 3-months ahead OIS rate, see Section 5.

If they occur within the quarter, they are partially assigned to the current and subsequent quarter (Gorodnichenko and Weber, 2016). The monetary policy shock series covers 1999Q1 through 2018Q4. Table 1 shows descriptive statistics and Figure A.1 in the Appendix shows the time series.

As a plausibility check and to provide a benchmark for our subsequent worker-level results, we estimate the responses of macroeconomic aggregates for the Austrian economy to the monetary policy shocks, see Figure A.2 in the Appendix. We find that a one-standard deviation monetary policy shock lowers real GDP by up to 0.4% with the peak effects attained between one and two years after the shock. We observe a similar dynamic for the employment rate which falls by up to 0.3 p.p. for prime-age workers.

3 Employment Probability

In this section, we estimate the effects of monetary policy shocks on the employment probability of workers. We find that low-paid workers who are employed in high-paying firms before the shock are most affected by monetary policy.

3.1 Average Response

Before studying the distributional employment effects of monetary policy, we estimate the average employment effect across all workers. This provides a benchmark for the subsequent analysis. We estimate the following worker-level panel local projections on around 200 million worker-quarter observations of our baseline sample⁹

$$e_{i,t+h} = \alpha_i^h + \beta^h \varepsilon_t^{\text{MP}} + \delta^h Z_{i,t-1} + v_{i,t+h}^h, \quad (3.1)$$

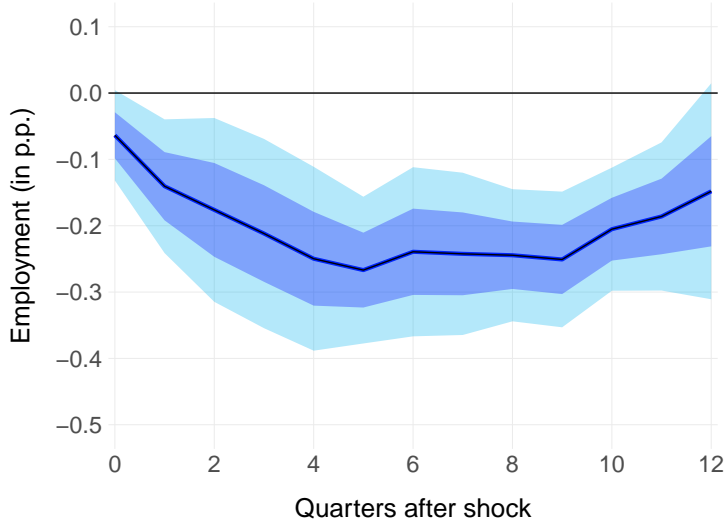
for $h = 0, \dots, 12$ quarters and where $e_{i,t+h}$ denotes a binary employment variable with

$$e_{i,t+h} = \begin{cases} 1 & \text{worker } i \text{ is employed in quarter } t+h, \\ 0 & \text{else.} \end{cases}$$

We include only workers in the regression that are employed in $t-1$, the quarter preceding the monetary policy shock. This facilitates the comparison with the subsequent analysis, in which we need to condition on employment in $t-1$ in order to study the responses by

⁹The large number of observations together with the two-way clustering implies a very high computational demand of this regression, which makes it infeasible to run these regression on standard personal computers. We thank the Baden-Württemberg high performance cluster (bwHPC) for support of our project.

Figure 1: Average employment response (β^h)



Note: The solid line shows the estimated β^h coefficients in equation (3.1). The β^h coefficients are standardized to capture the employment probability response to a one standard deviation increase in $\varepsilon_t^{\text{MP}}$. The inner and outer shaded areas respectively indicate 68% and 95% confidence bands two-way clustered by worker and quarter.

worker and firm types.¹⁰ On the right-hand side, α_i^h denotes a worker fixed effect (not the AKM worker fixed effect), $\varepsilon_t^{\text{MP}}$ is the monetary policy shock, and $Z_{i,t-1}$ is a vector of control variables, notably a linear time trend and season fixed effects for the four quarters. The coefficient of interest is β^h , which captures the change in the employment probability in response to a monetary policy shock.

Figure 1 shows the average response of the employment probability based on (3.1). The solid line shows the point estimates of β^h , normalized to correspond to a one-standard deviation monetary policy shock, and the shaded areas indicate 68% and 95% confidence bands based on standard errors that are two-way clustered by worker and quarter. We find that the employment probability significantly falls. The response gradually builds up and peaks at a 0.27 p.p. lower employment probability five quarters after the shock. The average worker-level response is broadly in line with the aggregate employment response in Figure A.2.

While Figure 1 shows the employment response of workers employed in the quarter before the monetary policy shock, we also examine the effect on workers who are unemployed before the shock. Figure A.3 in the Appendix shows that unemployed workers are significantly less likely to become employed after monetary policy shocks. In response to a one standard deviation shock, their employment probability falls by up to 0.89 p.p. In comparison, the average quarterly UE transition rate is 24.8%, see Table 1.

¹⁰We study the employment response of for workers that are non-employed in period $t - 1$ at the end of this subsection.

3.2 Heterogeneity across Worker and Firm Fixed Effects

We next present our empirical results on the distributional employment effects of monetary policy across worker and firm fixed effects. Formally, we estimate the following state-dependent worker-level panel local projections

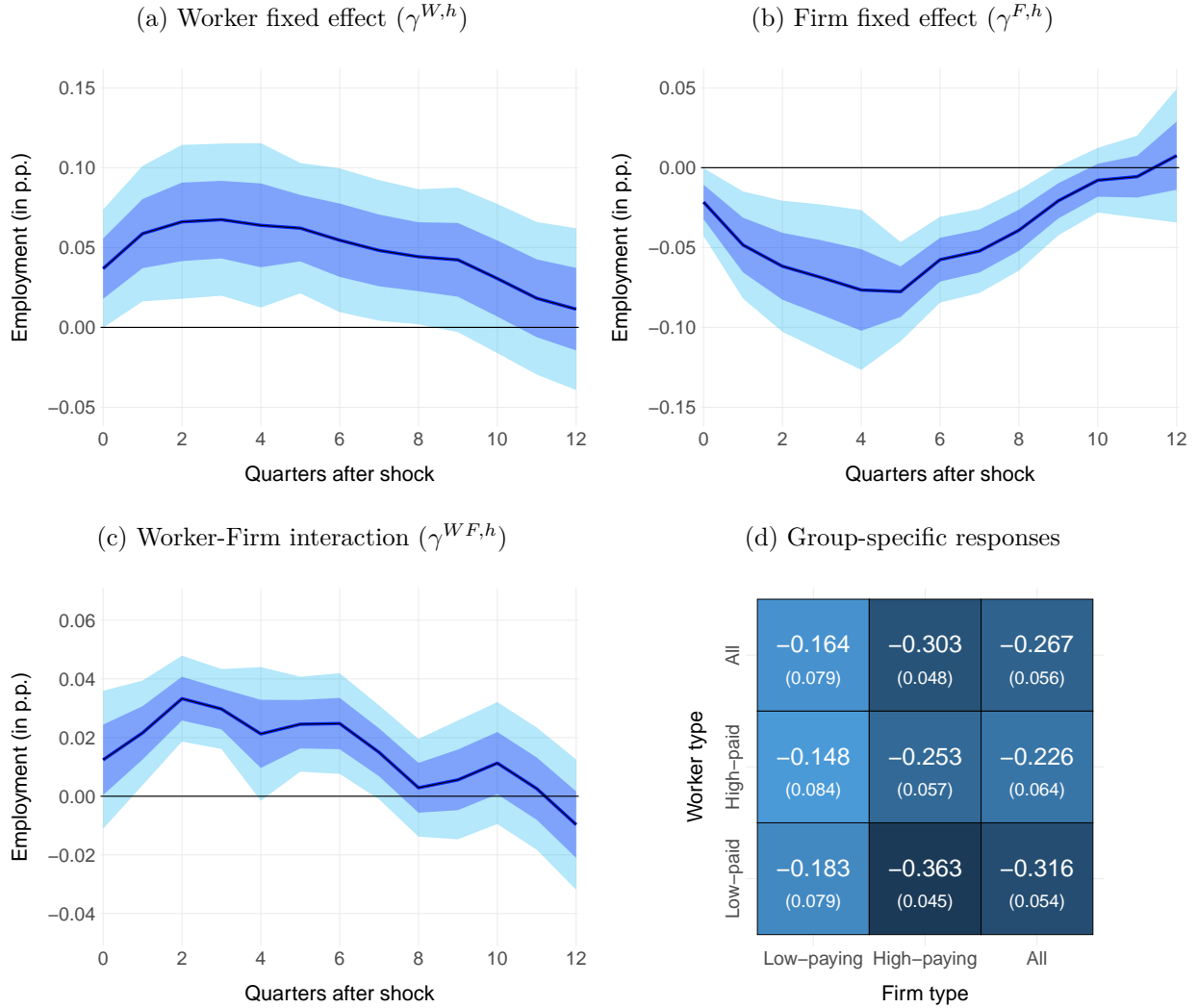
$$\begin{aligned}
 e_{i,t+h} & & (3.2) \\
 = & \alpha_i^h + \delta^h Z_{i,t-1} + v_{i,t+h}^h \\
 & + \beta^h \varepsilon_t^{\text{MP}} & (\text{average effect}) \\
 & + \gamma^{W,h} \varepsilon_t^{\text{MP}} \left(\overline{\mathbf{W}}_{i,\tau-1}^{\text{rolling}} - \overline{\mathbf{W}}_{i,\tau-1} \right) & (\text{worker heterogeneity}) \\
 & + \gamma^{F,h} \varepsilon_t^{\text{MP}} \left(\overline{\mathbf{F}}_{j(i,t-1),\tau-1}^{\text{rolling}} - \overline{\mathbf{F}}_{j(i,t-1),\tau-1} \right) & (\text{firm heterogeneity}) \\
 & + \gamma^{WF,h} \varepsilon_t^{\text{MP}} \left(\overline{\mathbf{W}}_{i,\tau-1}^{\text{rolling}} - \overline{\mathbf{W}}_{i,\tau-1} \right) \left(\overline{\mathbf{F}}_{j(i,t-1),\tau-1}^{\text{rolling}} - \overline{\mathbf{F}}_{j(i,t-1),\tau-1} \right), & (\text{interaction})
 \end{aligned}$$

where β^h captures the employment response of a worker with an average worker fixed effect in the year preceding the monetary policy shock (i.e., for $\overline{\mathbf{W}}_{i,\tau-1}^{\text{rolling}} = \overline{\mathbf{W}}_{i,\tau-1}$) and an average firm fixed effect for the firm which employed the worker in quarter $t - 1$ (i.e., for $\overline{\mathbf{F}}_{j(i,t-1),\tau-1}^{\text{rolling}} = \overline{\mathbf{F}}_{j(i,t-1),\tau-1}$). The coefficient $\gamma^{W,h}$ captures the differential employment response of a higher worker fixed effect, $\gamma^{F,h}$ captures the differential employment response of a higher firm fixed effect, and $\gamma^{WF,h}$ captures the differential employment response of the interaction between a higher worker and a higher firm fixed effect.¹¹ While study the heterogeneity in our baseline with a linear specification, we will later show that our results are very similar if we use worker and firm groups instead.

Figure 2 presents our main results from equation (3.2). Panel (a) shows that workers with higher worker fixed effect are significantly less likely to become non-employed after a monetary policy shock (conditional on an average firm fixed effect). The estimated differences are economically meaningful. Workers with a one standard deviation higher worker fixed effect are up to 0.07 p.p. less likely to become non-employed compared to the average employment probability response of up to 0.27 p.p. Turning to the role of firm fixed effects, panel (b) shows that workers employed in firms with a higher firm fixed effect are significantly more likely to become non-employed after a monetary policy shock (conditional on an average worker fixed effect). The magnitudes are similarly economically meaningful as for worker fixed effects. Equation (3.2) also contains an interaction effect between worker

¹¹The control vector $Z_{i,t-1}$ is specified as in Section 3.1 expect that the seasonal fixed effects are interacted with quintile group dummies for worker and firm fixed effects, respectively. This allows us to control for some heterogeneity in the employment seasonality across workers and firms.

Figure 2: Employment response across worker and firm fixed effects



Note: The solid lines in panels (a)-(c) show the estimated differential responses, the γ coefficients in equation (3.2). The γ coefficients are standardized to capture the employment probability response to a one standard deviation increase in ε_t^{MP} and for a one standard deviation above-average worker and firm fixed effect. The inner and outer shaded areas respectively indicate 68% and 95% confidence bands two-way clustered by worker and quarter. Panel (d) shows the total employment response of different worker groups estimated based on β^h , $\gamma^{W,h}$, $\gamma^{F,h}$, $\gamma^{WF,h}$ at $h = 5$ and the associated standard errors are in parantheses. For example, the employment response of high-paid workers in low-paying firms is estimated based on $\beta^h + (p_{75}^W - p_{50}^W)\gamma^{W,h}/\sigma_W + (p_{25}^F - p_{50}^F)\gamma^{F,h}/\sigma_F + (p_{75}^W - p_{50}^W)(p_{25}^F - p_{50}^F)\gamma^{WF,h}/(\sigma_W\sigma_F)$, where p_x^W and p_x^F denote the x-th percentiles of the distribution of worker and firm fixed effects, and σ_W and σ_F are the associated standard deviations.

and firm fixed effect. Panel (c) shows that the coefficient on the interaction is significantly positive. This means that workers with combinations of high (or low) worker and firm fixed effects are less likely to become non-employed than workers with opposite combinations. Put differently, workers are more likely to become non-employed when their worker fixed effect is in the opposite half of the distribution than their firm fixed effect.

Panel (d) of Figure 2 presents the group-specific total employment responses, based on

combining the average (β^h) and the differential ($\gamma^{W,h}, \gamma^{F,h}, \gamma^{WF,h}$) responses. We define low and high-paid workers as workers with a worker fixed effect at the 25th and 75th percentile, respectively. Analogously, we define low and high-paying firms as firm fixed effect at the 25th and 75th percentile across all workers, respectively. The table in panel (d) shows the employment response of different combinations of low and high-paid workers and low and high-paying firms at horizon $h = 5$, when the average employment response peaks. We find that the employment responses differ similarly across firm and worker types, see the “All” column and row, respectively. While a monetary policy shock lowers the employment probability by 0.16 p.p. for workers at low-paying firms, it plummets by 0.30 p.p. at high-paying firms. In comparison, the drop is 0.23 p.p. for high-paid workers and 0.32 p.p. for low-paid workers. What stands out from the table is that low-paid workers at high-paying firms are most affected by monetary policy shocks. The employment probability for them drops by 0.36 p.p. The least affected group is high-paid workers from low-paying firms, for which the employment probability drops by 0.15 p.p. This implies that the most affected group of workers in the table has a 2.4 times higher probability of non-employment than the least affected group.

4 Reallocation of Workers across Firms

In this section, we estimate the effects of monetary policy shocks on the reallocation of workers across firms. We find that workers are more likely to switch firms and they tend to switch to worse-paying firms. In particular low-paid workers employed in low-paying firms before the shock are most likely to switch to worse-paying firms.

4.1 Firm Switching Probability

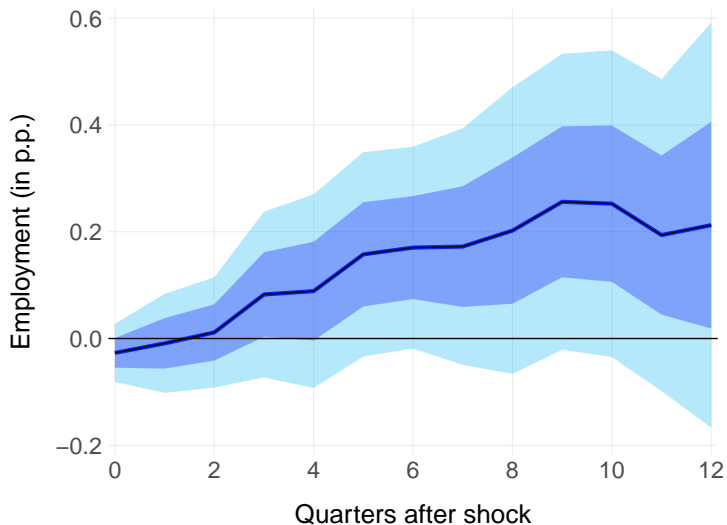
To estimate the average effects of monetary on the probability that a worker switches between firms, we use equation (3.1) but replace the left-hand side by a dummy variable that indicates whether a worker switches firms

$$e_{i,t+h}^{switch} = \begin{cases} 1 & \text{if a worker is employed in } t+h \text{ by a different firm than in } t-1, \\ 0 & \text{else.} \end{cases} \quad (4.1)$$

For $h = 0$, the sample average of $e_{i,t+h}^{switch}$ is the quarterly firm switching probability, the EE transition rate, which is 2.8%, see Table 1.

The estimated average response of the firm switching probability to a one standard deviation monetary policy shock is shown in Figure 3. The switching probability increases by up to

Figure 3: Average response of firm switching probability



Note: The solid line shows the estimated β^h coefficients in equation (3.1) when using as right-hand side (4.1). The β^h coefficients are standardized to capture the firm switching probability response to a one standard deviation increase in ε_t^{MP} . The inner and outer shaded areas respectively indicate 68% and 95% confidence bands two-way clustered by worker and quarter.

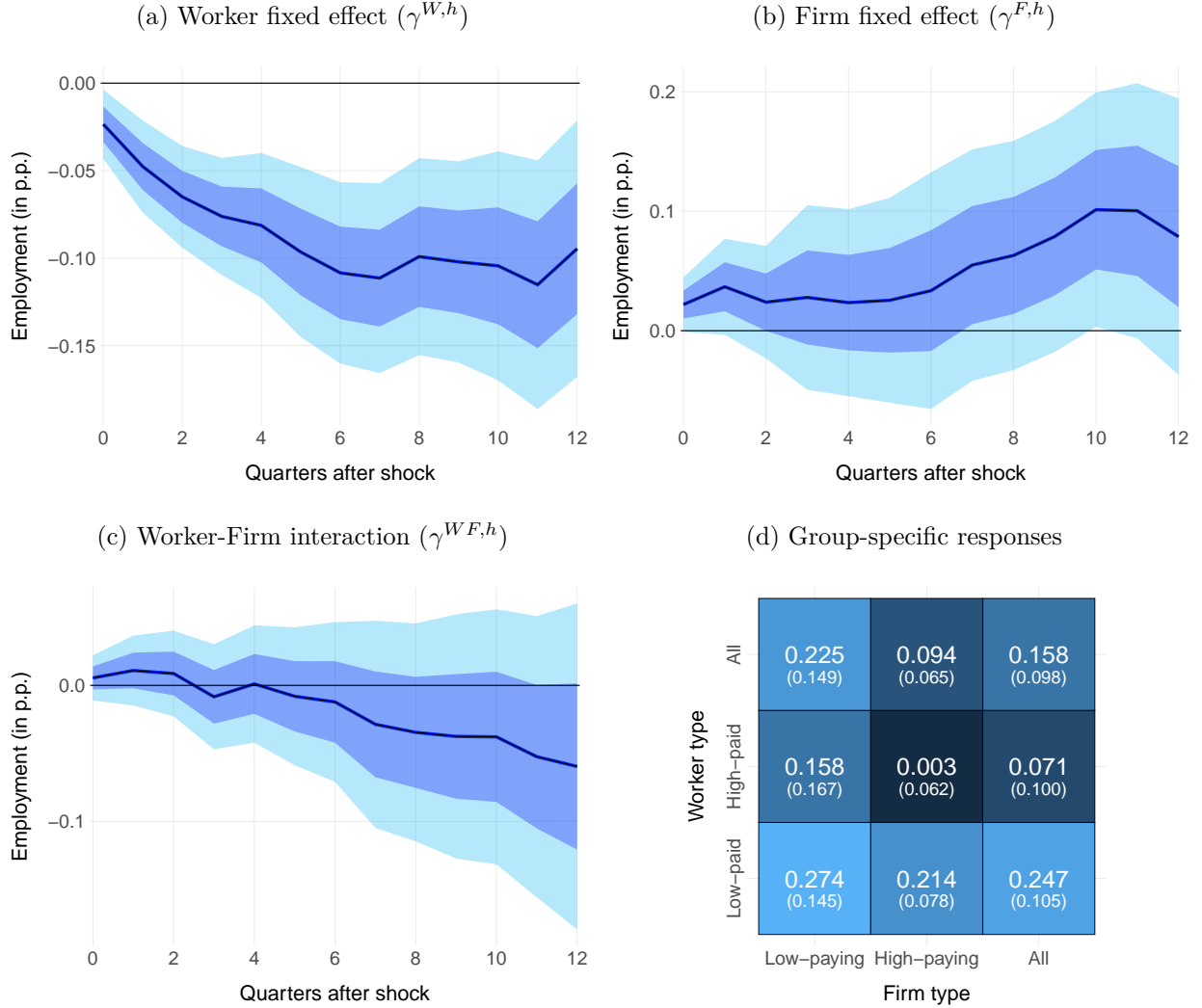
0.25 p.p. after the shock, which is a sizable increase over the average switching probability. However, the response is only mildly significant, in particular when compared to the response of the employment probability in Figure 1.

We again turn to understand which workers are more prone to change employers. In particular, we use (3.2) but replace again the left-hand side by the dummy variable indicating a change in employer from equation (4.1). Figure 4 provides our findings. Most remarkable is the role of the worker fixed effect. Low-paid workers are significantly more likely to switch firms. A one standard deviation lower worker fixed effect lowers the firm switching probability by up to 0.12 p.p. In contrast, we don't find significant differences across firm fixed effects or along the interaction of worker and firm fixed effects.

4.2 Firm Wages

The previous section showed that monetary policy induces workers to switch employers, with the effect concentrated among low-paid workers. This naturally leads to the question where these worker move to, in particular, whether they find better or worse paying employers compared to before. Thus, we first ask whether monetary policy on average leads to a reallocation of workers towards lower or higher firm fixed effects. To estimate the average effect of monetary policy shocks on the change in the firm fixed effects of workers that switch

Figure 4: Firm switching response across worker and firm fixed effects



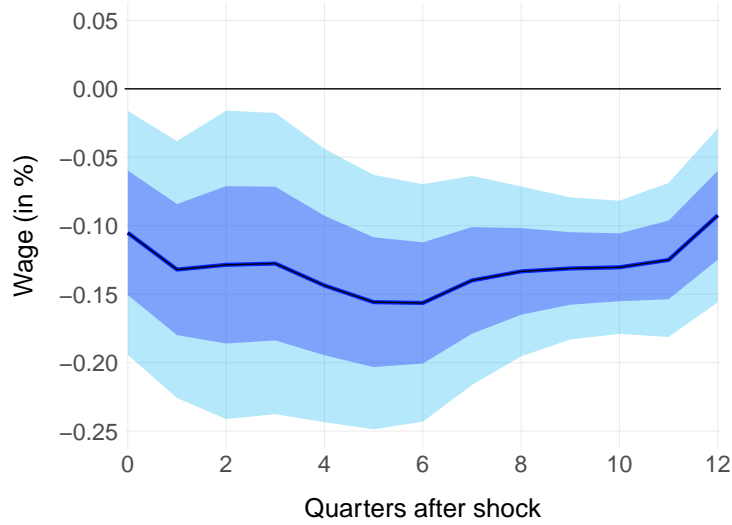
Note: The solid lines in panels (a)-(c) show the estimated differential responses, the γ coefficients in equation (3.2) when replacing the left-hand side by (4.1). The γ coefficients are standardized to capture the firm switching probability response to a one standard deviation increase in ε_t^{MP} and for a one standard deviation above-average worker and firm fixed effect. The inner and outer shaded areas respectively indicate 68% and 95% confidence bands two-way clustered by worker and quarter. Panel (d) shows the total firm switching response of different worker groups estimated based on $\beta^h, \gamma^{W,h}, \gamma^{F,h}, \gamma^{WF,h}$ at $h = 5$ and the associated standard errors are in parantheses. For example, the firm switching response of high-paid workers in low-paying firms is estimated based on $\beta^h + (p_{75}^W - p_{50}^W)\gamma^{W,h}/\sigma_W + (p_{25}^F - p_{50}^F)\gamma^{F,h}/\sigma_F + (p_{75}^W - p_{50}^W)(p_{25}^F - p_{50}^F)\gamma^{WF,h}/(\sigma_W\sigma_F)$, where p_x^W and p_x^F denote the x -th percentiles of the distribution of worker and firm fixed effects, and σ_W and σ_F are the associated standard deviations.

firms, we use (3.1) but replace the left-hand side by

$$\mathbf{F}_{j(i,t+h)} - \mathbf{F}_{j(i,t-1)}, \quad (4.2)$$

which is the change in the worker-associated firm fixed effect between the original employer in $t - 1$ and the employer in $t + h$. Recall that in Section 3, we classified workers and

Figure 5: Average response of firm fixed effect



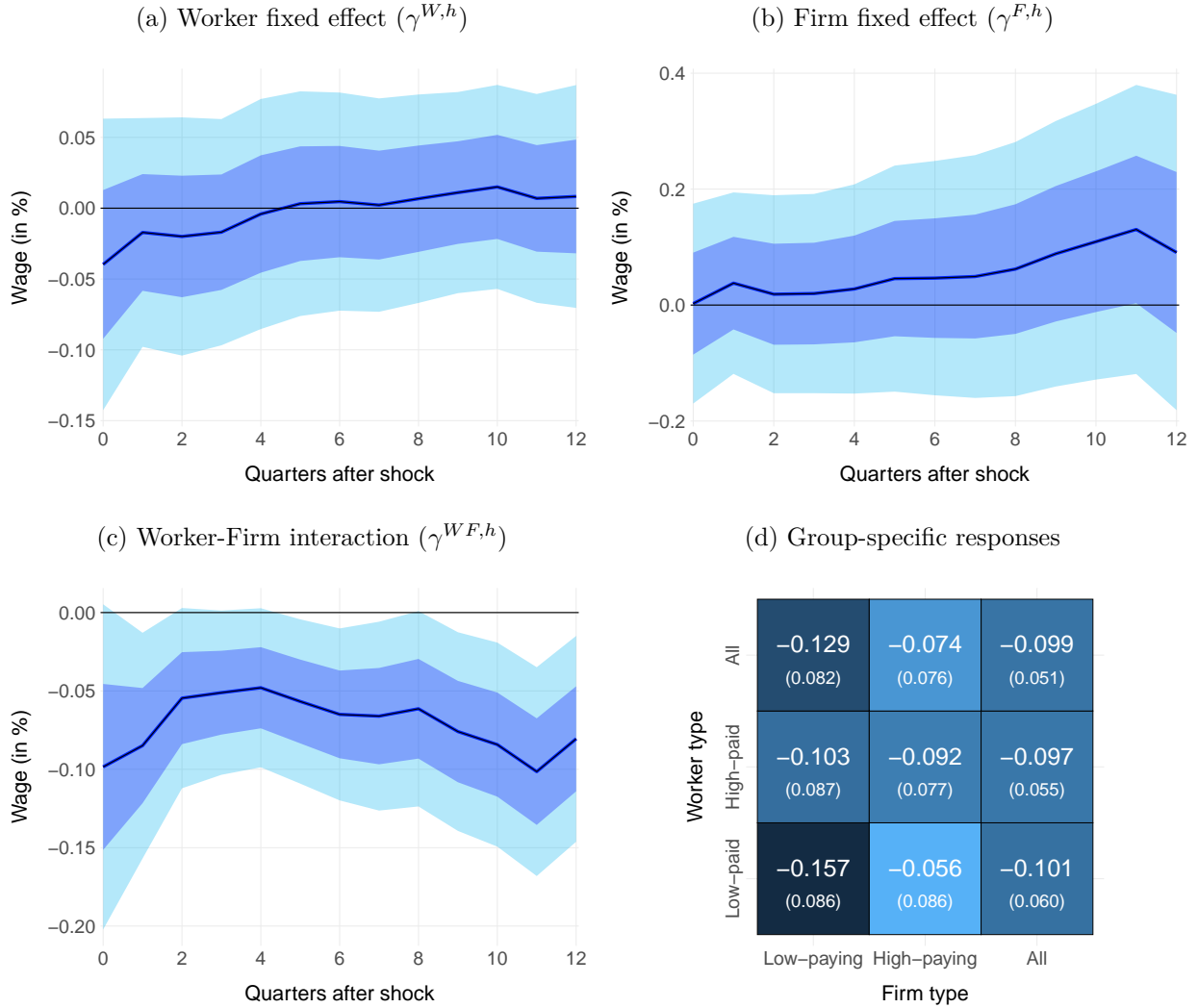
Note: The solid line shows the estimated β^h coefficients in equation (3.1) when using as right-hand side (4.2) and restricting the sample to workers who switch firms. The β^h coefficients are standardized to capture the change in firm fixed effect to a one standard deviation increase in $\varepsilon_t^{\text{MP}}$. The inner and outer shaded areas respectively indicate 68% and 95% confidence bands two-way clustered by worker and quarter.

firms using the backward-looking fixed effects in order to avoid endogeneity of fixed effects with respect to the monetary policy shocks. In contrast, (4.2) features the firm fixed effect estimates over the entire sample, because we can otherwise not compare firm fixed effects over time. We estimate the regression on changes in the firm fixed effect on the subset of workers switching firms between period $t - 1$ and $t + h$.

Figure 5 shows that the average response of the firm fixed is significantly negative. After a one standard deviation monetary policy shock, the average change in the firm wage premium of workers who switch firms falls by up to -0.16%. These effects are large compared to the unconditional average drop in the firm fixed effect of 0.30% for switching workers.

We next study the heterogeneity of the change in firm fixed effects across workers and firms. In particular, we use (3.2) but replace again the left-hand side by (4.2). Figure 6 provides our findings. Panel (a) shows that the differential responses of changes in the firm fixed effect associated with a higher worker fixed effect are indistinguishable from zero when the original firm fixed effect equals the sample average. Similarly, panel (b) shows that the differential responses of changes in the firm fixed effect associated with a higher firm fixed effect are insignificant when the worker fixed effect equals the sample average. Interestingly, panel (c) shows that there is a strong interaction between the worker fixed effect and the initial firm fixed effect. Taking the average and all differential estimates together, panel (d) shows that low-paid workers employed at low-paying firms before the shock are losing the most from

Figure 6: Firm fixed effect response across worker and (original) firm fixed effects



Note: The solid lines in panels (a)-(c) show the estimated differential responses, the γ coefficients in equation (3.2) when replacing the left-hand side by (4.2) and restricting the sample to workers who switch firms. The γ coefficients are standardized to capture the change in firm fixed effects in response to a one standard deviation increase in $\varepsilon_t^{\text{MP}}$ and for a one standard deviation above-average worker and firm fixed effect. The inner and outer shaded areas respectively indicate 68% and 95% confidence bands two-way clustered by worker and quarter. Panel (d) shows the total response of firm fixed effects of different worker groups estimated based on $\beta^h, \gamma^{W,h}, \gamma^{F,h}, \gamma^{WF,h}$ at $h = 5$ and the associated standard errors are in parantheses. For example, the firm fixed effect response of high-paid workers in low-paying firms is estimated based on $\beta^h + (p_{75}^W - p_{50}^W)\gamma^{W,h}/\sigma_W + (p_{25}^F - p_{50}^F)\gamma^{F,h}/\sigma_F + (p_{75}^W - p_{50}^W)(p_{25}^F - p_{50}^F)\gamma^{WF,h}/(\sigma_W\sigma_F)$, where p_x^W and p_x^F denote the x -th percentiles of the distribution of worker and firm fixed effects, and σ_W and σ_F are the associated standard deviations.

reallocation after monetary policy shocks.

Overall our results show that monetary policy shocks tends to reallocate workers toward worse-paying firms. This effect is particularly pronounced for low-paid workers originally employed in low-paying firms.

5 Sensitivity Analysis

In this section, we examine the sensitivity of our empirical findings with respect to an alternative regression specification, alternative monetary policy shocks, control variables, sample, and data treatment.

Dummies of worker and firm fixed effects. Our findings on the role of worker and firm fixed effects in Figures 2, 4, 6 are estimated based on the local projection model in (3.2) which features linear interactions between monetary policy shocks and worker and firm fixed effects. We examine the sensitivity of our findings to an alternative semi-parametric regression model, in which we replace the linear interactions by dummies of worker and firm fixed effects above the average. Formally, we estimate

$$\begin{aligned}
 e_{i,t+h} & & (5.1) \\
 = & \alpha_i^h + \delta^h Z_{i,t-1} + v_{i,t+h}^h \\
 & + \beta^h \varepsilon_t^{\text{MP}} \\
 & + \gamma^{W,h} \varepsilon_t^{\text{MP}} \times \mathbb{1} \left\{ \widetilde{\mathbf{W}}_{i,\tau-1}^{\text{rolling}} > \overline{\widetilde{\mathbf{W}}}_{i,\tau-1}^{\text{rolling}} \right\} \\
 & + \gamma^{F,h} \varepsilon_t^{\text{MP}} \times \mathbb{1} \left\{ \widetilde{\mathbf{F}}_{j(i,t-1),\tau-1}^{\text{rolling}} > \overline{\widetilde{\mathbf{F}}}_{j(i,t-1),\tau-1}^{\text{rolling}} \right\} \\
 & + \gamma^{WF,h} \varepsilon_t^{\text{MP}} \times \mathbb{1} \left\{ \widetilde{\mathbf{W}}_{i,\tau-1}^{\text{rolling}} > \overline{\widetilde{\mathbf{W}}}_{i,\tau-1}^{\text{rolling}} \right\} \times \mathbb{1} \left\{ \widetilde{\mathbf{F}}_{j(i,t-1),\tau-1}^{\text{rolling}} > \overline{\widetilde{\mathbf{F}}}_{j(i,t-1),\tau-1}^{\text{rolling}} \right\},
 \end{aligned}$$

where $\mathbb{1}\{\cdot\}$ is a binary dummy and $Z_{i,t-1}$ is defined as in Section 3.

Panel (a) of Figure A.4 in the Appendix shows the group-specific employment responses estimated from (5.1). Our findings change by little compared to using linear interactions, see panel (d) in Figures 2. The estimated magnitudes are comparable and similarly significant. Importantly, the group with the highest non-employment exposure to monetary policy remain low-paid workers employed at high-paying firms before the shock.

Panel (b) of Figure A.4 in the Appendix shows the group-specific firm switching responses estimated from (5.1). Our findings change by little compared to using linear interactions, see panel (d) in Figures 4. The estimated magnitudes are comparable and similarly significant. Importantly, the group with the highest non-employment exposure to monetary policy remain low-paid workers employed at high-paying firms before the shock.

Panel (b) of Figure A.4 shows the non-linear estimates of the group-specific responses of the firm switching probability. To be precise, we estimate (5.1) when replacing the left hand side by the firm switching dummy in (4.1). Our findings are similar to using the linear

interactions, see panel (d) in Figures 4. The group with the highest exposure to monetary policy remain low-paid workers employed at low-paying firms before the shock.

Panel (c) of Figure A.4 shows the non-linear estimates of firm fixed effect responses for workers switching firms after the shock. To be precise, we estimate (5.1) when replacing the left hand side by the change in the firm fixed effect in (4.2). Our findings are overall robust to using the linear interactions, compare with panel (d) in Figures 6. The group with the highest exposure to monetary policy remain low-paid workers employed at low-paying firms before the shock.

Monetary policy shocks. Our baseline monetary policy shocks are based on the sign-restricted changes in the 6-month OIS rates. We examine the robustness of our results when using instead the changes in the 6-month OIS rates around policy announcement without applying sign restrictions. Figure A.5 shows that our estimated employment responses have similar point estimates, but are mostly insignificant. This suggests that the raw surprises are strongly contaminated by information effects (Jarociński and Karadi, 2020). We further consider the sign-restricted 3-month OIS rate surprises. Figure A.6 shows that we obtain very similar effects than in the baseline, both in terms of magnitude and significance.

Control variables. We examine the sensitivity of our baseline specification to controlling for a set of standard macroeconomic variables. In particular, we enrich $Z_{i,t-1}$ to include a lagged monetary policy shock and changes in log GDP, log CPI, and the employment rate. Figure A.7 shows that this does not change much our findings.

Pre-ZLB sample. Every paper using high-frequency identified monetary policy shocks faces the potential problem of the Zero Lower Bound (ZLB). Our baseline results use the longest possible sample including the ZLB. Importantly, because our monetary policy shocks are based on 6-month interest rates, we observe many shocks even during the ZLB episode, see Figure A.1. Nevertheless, because monetary transmission may have changed we revisit our results in a pre-ZLB sample, ending in 2012Q2 just before the deposit facility rate reached zero. Figure A.8 in the Appendix shows that the employment responses are robust to using the pre-ZLB sample.

Missing worker observations. Our baseline data treatment only considers workers which are registered as employed or unemployed. Some workers leave our sample for some quarters before returning. Potential reasons are that they stopped receiving unemployment benefits, they left the country, or they became self-employed. We revisit our results when

assuming that missing observations between two appearance of a worker in the sample are non-employment spells. Figure A.9 shows that this change amplifies the average employment response to -0.41 p.p. and heterogeneity in worker fixed effects. In contrast, firm fixed effects become less important.

6 Conclusion

In this paper, we empirically characterize the distributional effects of ECB monetary policy shocks across workers and firms using Austrian social security records. We focus on the heterogeneity along worker and firm types identified by a [Abowd et al. \(1999\)](#) regression, which is the workhorse model to estimate the worker and firm components of wages.

We document three novel results. First, we document which type of workers and firms face the highest decline in employment in response to a contractionary monetary policy shock. Individuals who are low-paid and employed at high-paying firms face the strongest employment declines. Second, monetary tightening increases the rate at which workers reallocate across firms, in particular for low-paid workers. Third, we document that monetary policy shocks lead to a reallocation of workers to worse-paying firms, with low-paid workers from low-paying firms especially prone to falling off the firm wage ladder. While all low-paid workers are especially exposed to contractionary monetary policy shocks, we document large differences across low-paid workers depending on the type of firm they are employed at before the shock.

Our results have implications for inequality, allocative efficiency, and transmission of monetary policy. For inequality, we show that the collapse of a job ladder is driven by the poorest workers. At the bottom of the income distribution, income is driven by labor earnings and its extensive margin (e.g., [Amberg et al., 2022](#)). Hence, lower employment probability and reallocation down a firm wage ladder that we document for the low-paying worker increases income inequality after a monetary shock. For allocative efficiency, if a worker wage rank corresponds to workers' skills and productivity, and if a firm wage rank corresponds to firms' productivity, reallocation towards lower-paying firms could contribute to a drop in aggregate productivity, as is well-documented in the literature (e.g., [Jordà et al., 2020](#); [Meier and Reinelt, 2022](#); [Baqae et al., 2022](#)). For the transmission of monetary policy, our results suggest that studying monetary models with two-sided heterogeneity is important. Moreover, our results suggest that a key moment is how marginal propensity to consume are distributed across both worker and firm types.

References

- ABOWD, J. M., F. KRAMARZ, AND D. N. MARGOLIS (1999): “High Wage Workers and High Wage Firms,” *Econometrica*, 67, 251–333.
- ALTAVILLA, C., L. BRUGNOLINI, T. GÜRKAYNAK, R. MOTTO, AND G. RAGUSA (2019): “Measuring euro area monetary policy,” *Journal of Monetary Economics*.
- AMBERG, N., T. JANSSON, M. KLEIN, AND A. R. PICCO (2022): “Five Facts about the Distributional Income Effects of Monetary Policy Shocks,” *American Economic Review: Insights*, 4, 289–304.
- ANDERSEN, T., N. JOHANNESSEN, M. JØRGENSEN, AND J.-L. PEYDRÓ (forthcoming): “Monetary Policy and Inequality,” *Journal of Finance*.
- AUCLERT, A. (2019): “Monetary Policy and the Redistribution Channel,” *American Economic Review*, 109, 2333–67.
- BAGGER, J. AND R. LENTZ (2018): “An Empirical Model of Wage Dispersion with Sorting,” *The Review of Economic Studies*, 86, 153–190.
- BAHAJ, S., A. FOULIS, G. PINTER, AND P. SURICO (2019): “Employment and the collateral channel of monetary policy,” Bank of England working papers 827, Bank of England.
- BAQAEE, D. R., E. FARHI, AND K. SANGANI (2022): “The Supply-Side Effects of Monetary Policy,” Mimeo.
- BERGMAN, N., D. A. MATSA, AND M. WEBER (2022): “Inclusive Monetary Policy: How Tight Labor Markets Facilitate Broad-Based Employment Growth,” Working Paper 29651, National Bureau of Economic Research.
- BERTHEAU, A., E. M. ACABBI, C. BARCELO, A. GULYAS, S. LOMBARDI, AND R. SAGGIO (2022): “The Unequal Cost of Job Loss across Countries,” Working Paper 29727, National Bureau of Economic Research.
- BHANDARI, A., D. EVANS, M. GOLOSOV, AND T. J. SARGENT (2021): “Inequality, Business Cycles, and Monetary-Fiscal Policy,” *Econometrica*, 89, 2559–2599.
- BONHOMME, S., K. HOLZHEU, T. LAMADON, E. MANRESA, M. MOGSTAD, AND B. SETZLER (2022): “How Much Should we Trust Estimates of Firm Effects and Worker Sorting?” *Journal of Labor Economics*.
- BONHOMME, S., T. LAMADON, AND E. MANRESA (2019): “A Distributional Framework for Matched Employer Employee Data,” *Econometrica*, 87, 699–739.
- BROER, T., J. KRAMER, AND K. MITMAN (2021): “The Cyclicity of Income Risk: Empirical Estimates from Monetary Policy Shocks,” Mimeo.
- COIBION, O., Y. GORODNICHENKO, L. KUENG, AND J. SILVIA (2017): “Innocent Bystanders? Monetary policy and inequality,” *Journal of Monetary Economics*, 88, 70

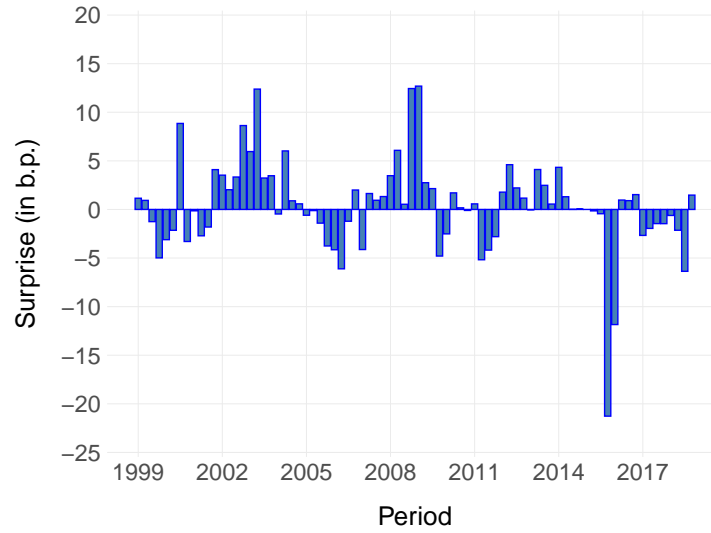
- CRANE, L. D., H. R. HYATT, AND S. M. MURRAY (2022): “Cyclical labor market sorting,” *Journal of Econometrics*.
- DOLADO, J. J., G. MOTYOVSZKI, AND E. PAPPA (2019): “Monetary Policy and Inequality under Labor Market Frictions and Capital-Skill Complementarity,” Tech. rep., mimeo.
- GERTLER, M. AND S. GILCHRIST (1994): “Monetary Policy, Business Cycles, and the Behavior of Small Manufacturing Firms,” *The Quarterly Journal of Economics*, 109, 309–340.
- GORNEMANN, N., K. KUESTER, AND M. NAKAJIMA (2021): “Doves for the Rich, Hawks for the Poor? Distributional Consequences of Monetary Policy,” *Mimeo*.
- GORODNICHENKO, Y. AND M. WEBER (2016): “Are Sticky Prices Costly? Evidence from the Stock Market,” *American Economic Review*, 106, 165–99.
- GULYAS, A. AND K. PYTKA (2019): “Understanding the Sources of Earnings Losses After Job Displacement: A Machine-Learning Approach,” Crc tr 224 discussion paper series, University of Bonn and University of Mannheim, Germany.
- HAGEDORN, M., T. H. LAW, AND I. MANOVSKII (2017): “Identifying Equilibrium Models of Labor Market Sorting,” *Econometrica*, 85, 29–65.
- HOLM, M. B., P. PAUL, AND A. TISCHBIREK (2021): “The Transmission of Monetary Policy under the Microscope,” *Journal of Political Economy*, 129, 2861–2904.
- JAROCIŃSKI, M. AND P. KARADI (2020): “Deconstructing Monetary Policy Surprises—The Role of Information Shocks,” *American Economic Journal: Macroeconomics*, 12, 1–43.
- JORDÀ, Ò., S. SINGH, AND A. M. TAYLOR (2020): “The long-run effects of monetary policy,” *mimeo*.
- KAPLAN, G., B. MOLL, AND G. L. VIOLANTE (2018): “Monetary Policy According to HANK,” *American Economic Review*, 108, 697–743.
- LACHOWSKA, M., A. MAS, AND S. A. WOODBURY (2020): “Sources of Displaced Workers’ Long-Term Earnings Losses,” *American Economic Review*, 110, 3231–66.
- LENZA, M. AND J. SLACALEK (2022): “How Does Monetary Policy Affect Income and Wealth Inequality? Evidence from Quantitative Easing in the Euro Area,” *Mimeo*.
- MCKAY, A., E. NAKAMURA, AND J. STEINSSON (2016): “The power of forward guidance revisited,” *American Economic Review*, 106, 3133–3158.
- MEIER, M. AND T. REINELT (2022): “Monetary Policy, Markup Dispersion, and Aggregate TFP,” *The Review of Economics and Statistics*, 1–45.
- MOSER, C., F. SAIDI, B. WIRTH, AND S. WOLTER (2022): “Credit Supply, Firms, and Earnings Inequality,” *Mimeo*.
- OTTONELLO, P. AND T. WINBERRY (2020): “Financial Heterogeneity and the Investment

- Channel of Monetary Policy,” *Econometrica*, 88, 2473–2502.
- RAVN, M. O. AND V. STERK (2020): “Macroeconomic Fluctuations with HANK & SAM: an Analytical Approach,” *Journal of the European Economic Association*, 19, 1162–1202.
- SONG, J., D. J. PRICE, F. GUVENEN, N. BLOOM, AND T. VON WACHTER (2018): “Firming Up Inequality,” *The Quarterly Journal of Economics*, 134, 1–50.
- ZWEIMÜLLER, J., R. WINTER-EBMER, R. LALIVE, A. KUHN, J.-P. WUELLRICH, O. RUF, AND S. BÜCHI (2009): “Austrian Social Security Database,” NRN working papers 2009-03, The Austrian Center for Labor Economics and the Analysis of the Welfare State, Johannes Kepler University Linz, Austria.

A Appendix

A.1 Monetary policy shocks

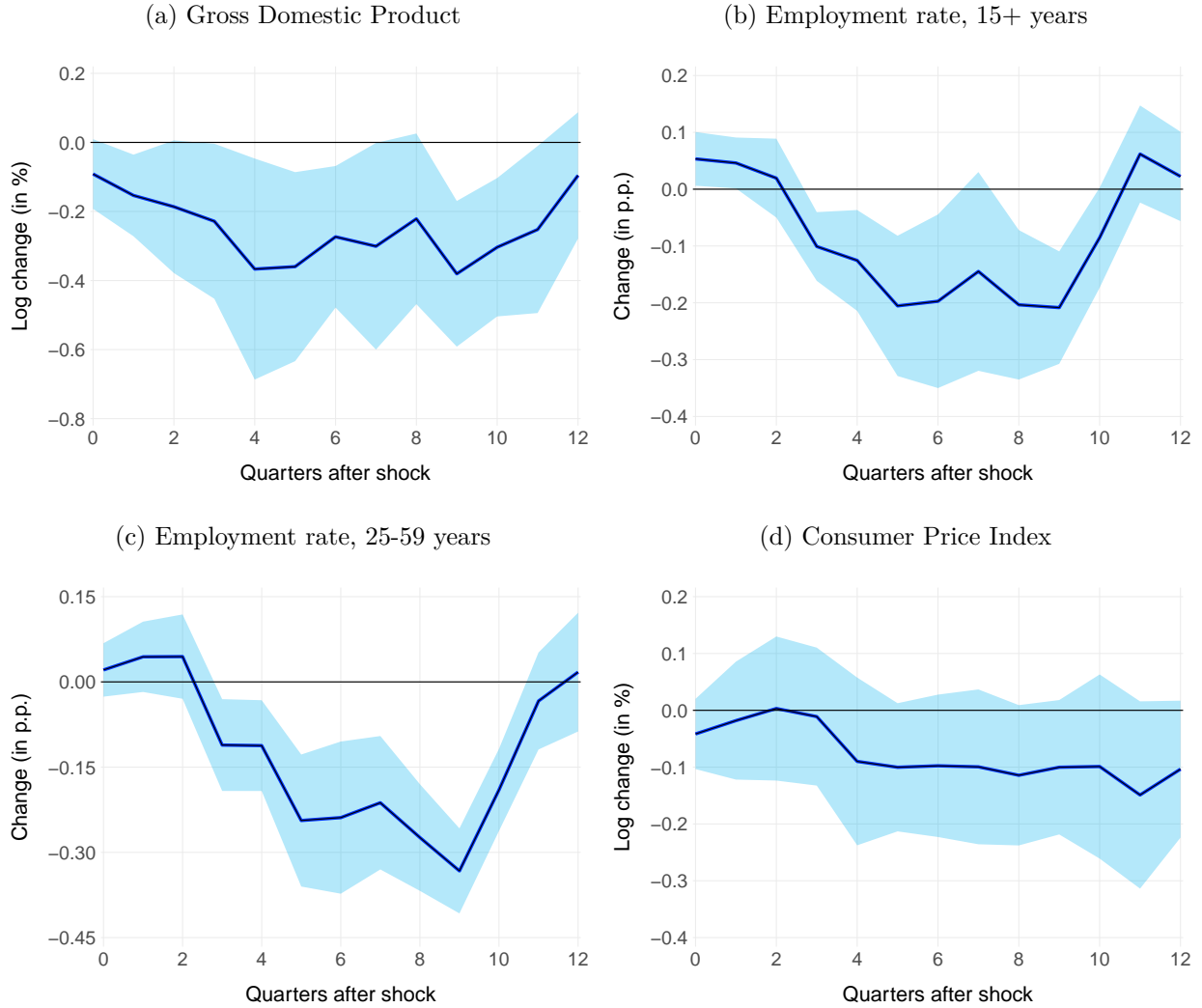
Figure A.1: Monetary policy shocks series



Note: The monetary policy shock series is based on the changes in the 6-month OIS rates around ECB policy announcements from [Altavilla et al. \(2019\)](#) and after applying sign restrictions as in [Jarociński and Karadi \(2020\)](#).

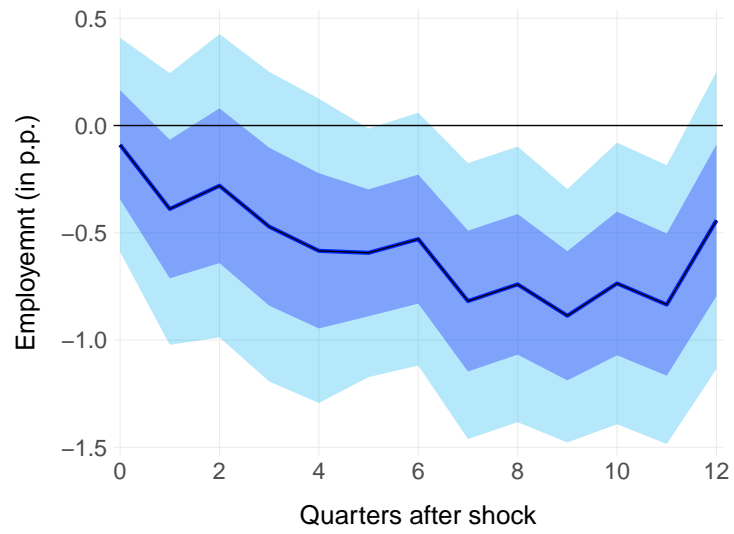
A.2 Additional results

Figure A.2: Macroeconomic responses to monetary policy shocks



Note: The solid lines show the estimated β^h coefficient in the local projection $y_{t+h} = \alpha + \beta^h \varepsilon_t^{\text{MP}} + \delta^h Z_{t-1} + v_{t+h}$, where Z_{t-1} contains a linear time trend, one lag of the shock $\varepsilon_t^{\text{MP}}$ and four lags of the employment rate, GDP growth, and CPI growth. The left hand side y_{t+h} is $\Delta^h \log GDP_{t+h}$ in panel (a), ER_{t+h} in panels (b)-(c), and $\Delta^h \log CPI_{t+h}$ in panel (d). The β^h coefficients are standardized to capture the response to a one standard deviation increase in $\varepsilon_t^{\text{MP}}$. The inner and outer shaded areas respectively indicate 68% and 95% Newey-West confidence bands.

Figure A.3: Employment probability of initially unemployed workers



Note: The solid line shows the estimated β^h coefficients in equation (3.1) for workers that are unemployed in $t - 1$. The β^h coefficients are standardized to capture the employment probability response to a one standard deviation increase in $\varepsilon_t^{\text{MP}}$. The inner and outer shaded areas respectively indicate 68% and 95% confidence bands two-way clustered by worker and quarter.

A.3 Sensitivity analysis

Figure A.4: Group-specific responses using the non-linear specification

(a) Response of employment probability

Worker type	All	-0.193 (0.054)	-0.338 (0.062)	-0.267 (0.056)
	High-paid	-0.154 (0.032)	-0.268 (0.048)	-0.216 (0.038)
	Low-paid	-0.226 (0.078)	-0.423 (0.081)	-0.319 (0.077)
		Low-paying	High-paying	All
		Firm type		

(b) Response of firm switching probability

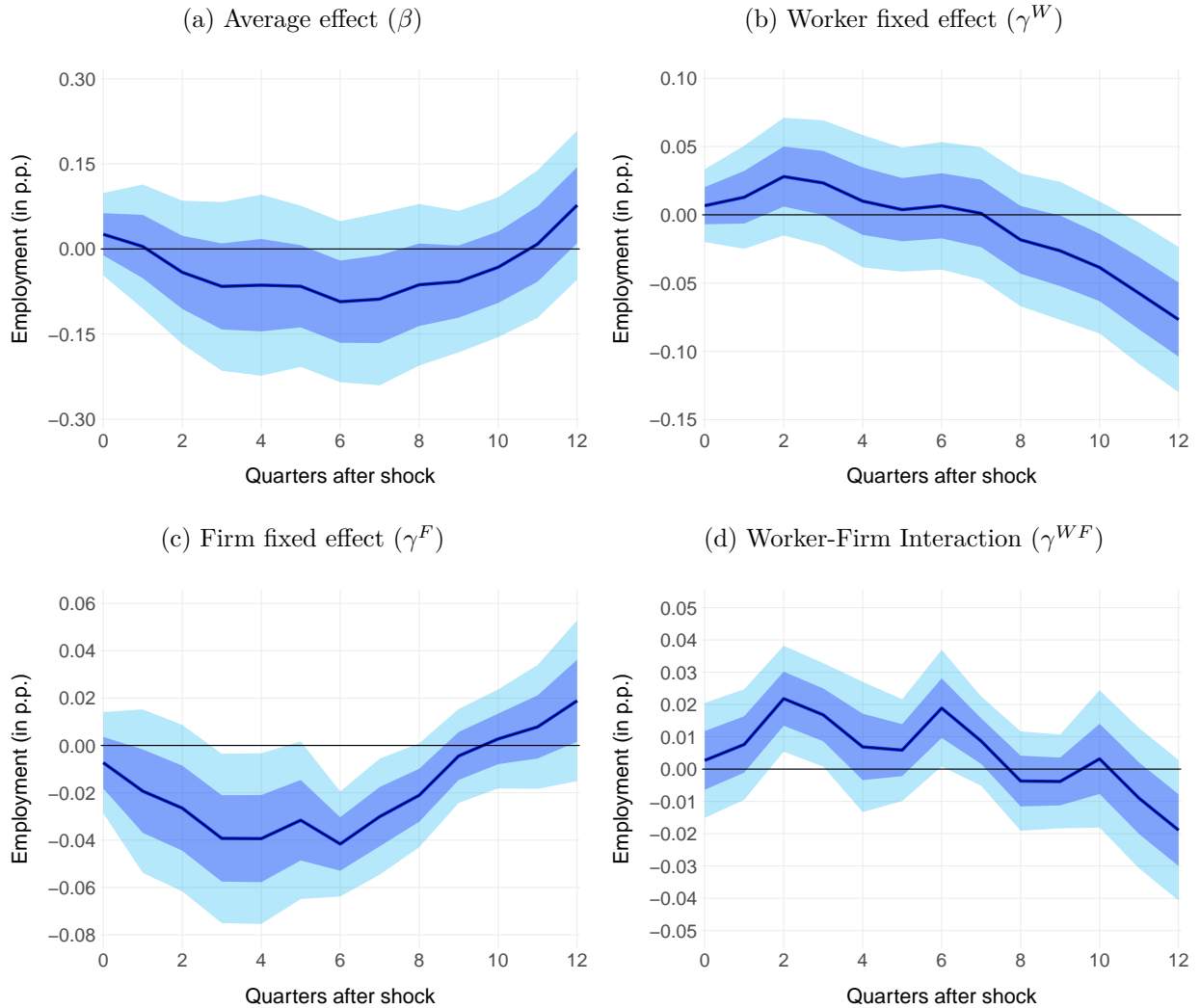
Worker type	All	0.225 (0.149)	0.094 (0.065)	0.158 (0.098)
	High-paid	0.158 (0.167)	0.003 (0.062)	0.071 (0.100)
	Low-paid	0.274 (0.145)	0.214 (0.078)	0.247 (0.105)
		Low-paying	High-paying	All
		Firm type		

(c) Response of firm fixed effect

Worker type	All	-0.19 (0.065)	-0.11 (0.095)	-0.156 (0.047)
	High-paid	-0.105 (0.096)	-0.098 (0.057)	-0.122 (0.039)
	Low-paid	-0.15 (0.077)	-0.001 (0.113)	-0.181 (0.060)
		Low-paying	High-paying	All
		Firm type		

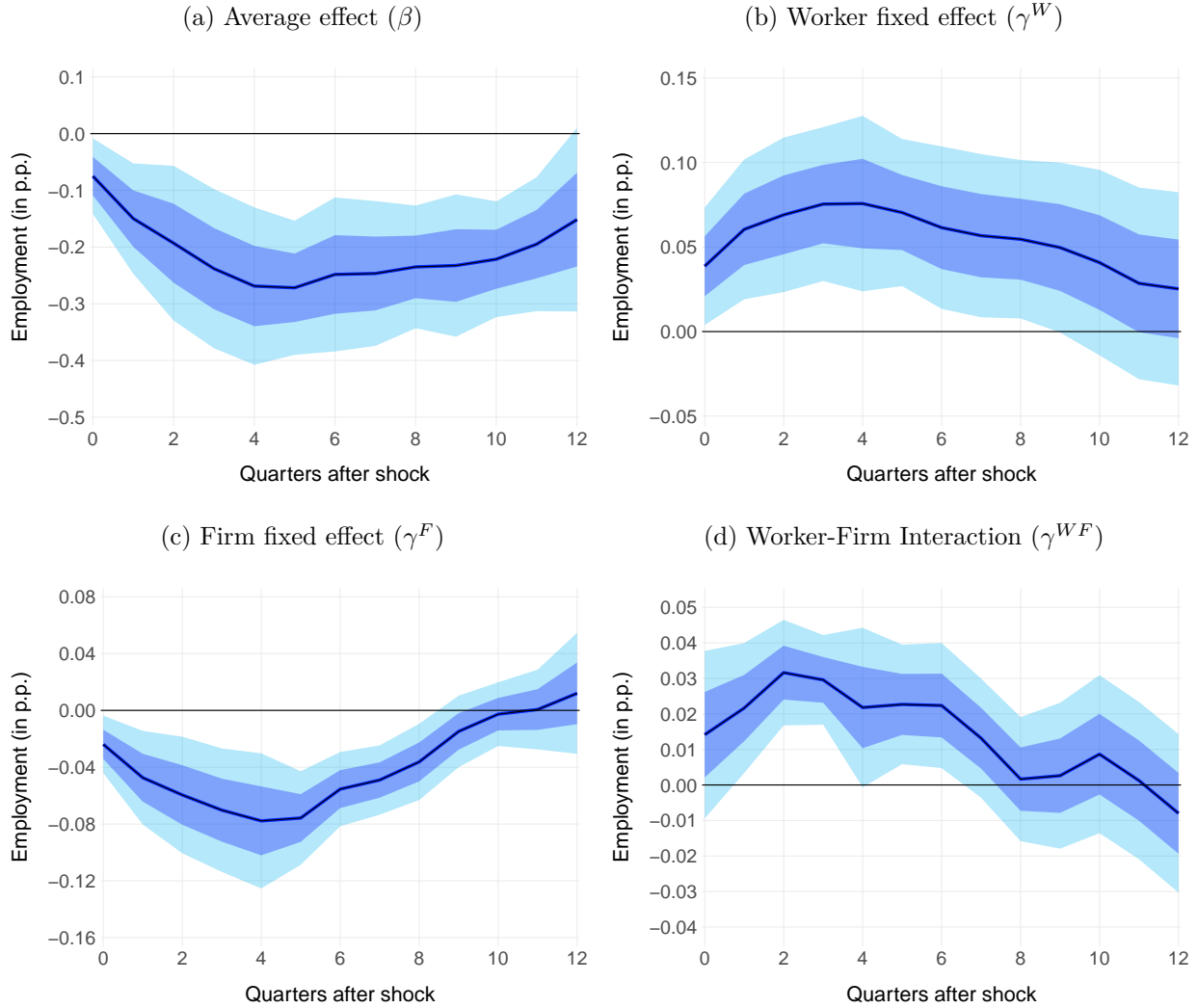
Note: Panel (a) shows the employment responses to a one standard deviation monetary policy shock of different worker groups estimated based on (5.1) at $h = 5$ with the associated standard errors are in parantheses. In panels (b) and (c), the left hand side of (5.1) is replaced by (4.1) and (4.2), respectively.

Figure A.5: Employment response using surprises in 6-month OIS rate



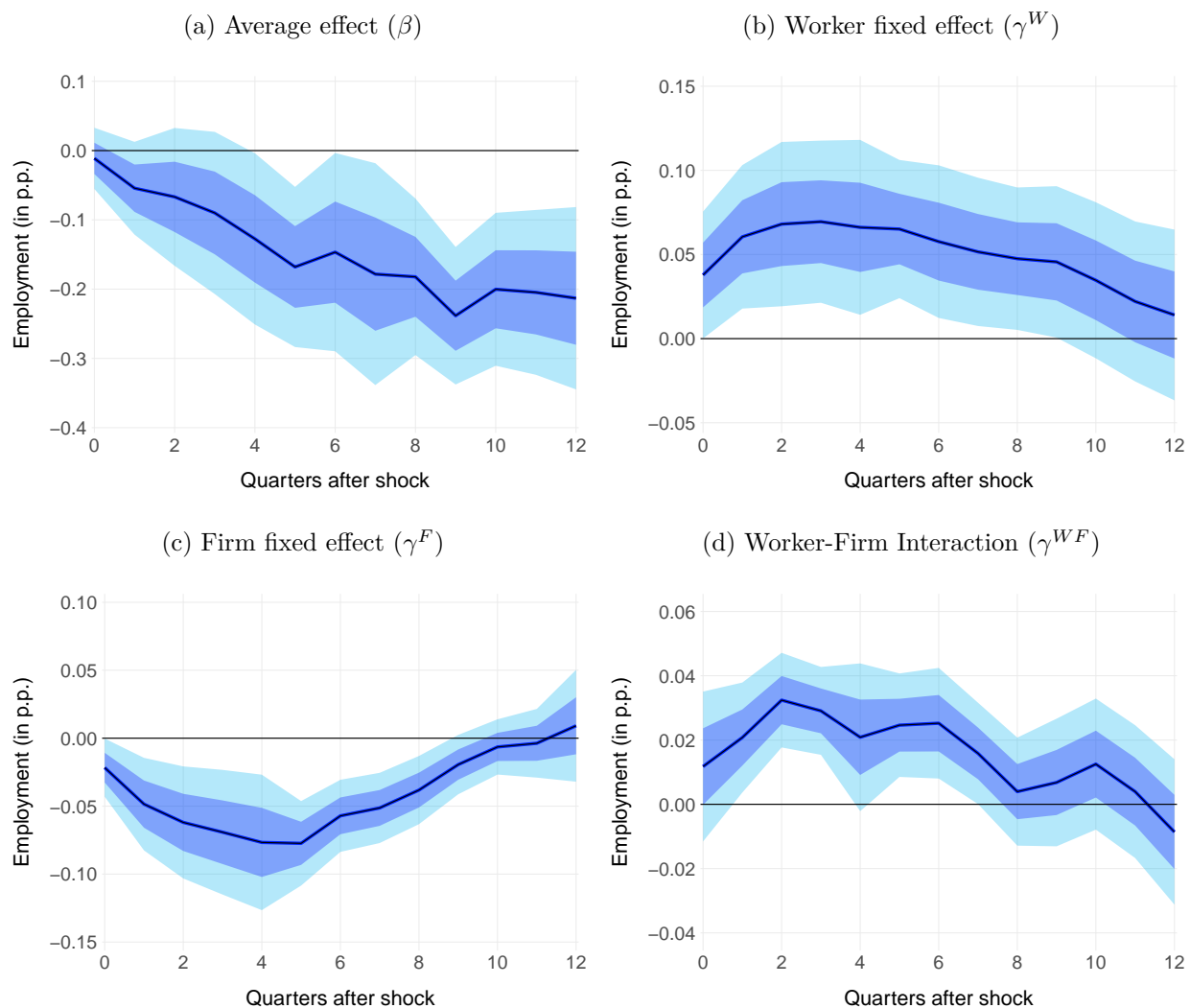
Note: The solid line in Panel (a) shows coefficients β^h in equation (3.1) when ε_t are surprises in the 6-month OIS rate. The solid lines in panels (b)-(d) show the estimated γ coefficients in equation (3.2) when ε_t are surprises in the 6-month OIS rate. The coefficients are standardized to correspond to a one standard deviation increase in ε_t^{MP} and a one standard deviation increase in firm and worker fixed effects. The inner and outer shaded areas respectively indicate 68% and 95% confidence bands two-way clustered by worker and quarter.

Figure A.6: Employment response using sign-restricted surprises in 3-month OIS rates



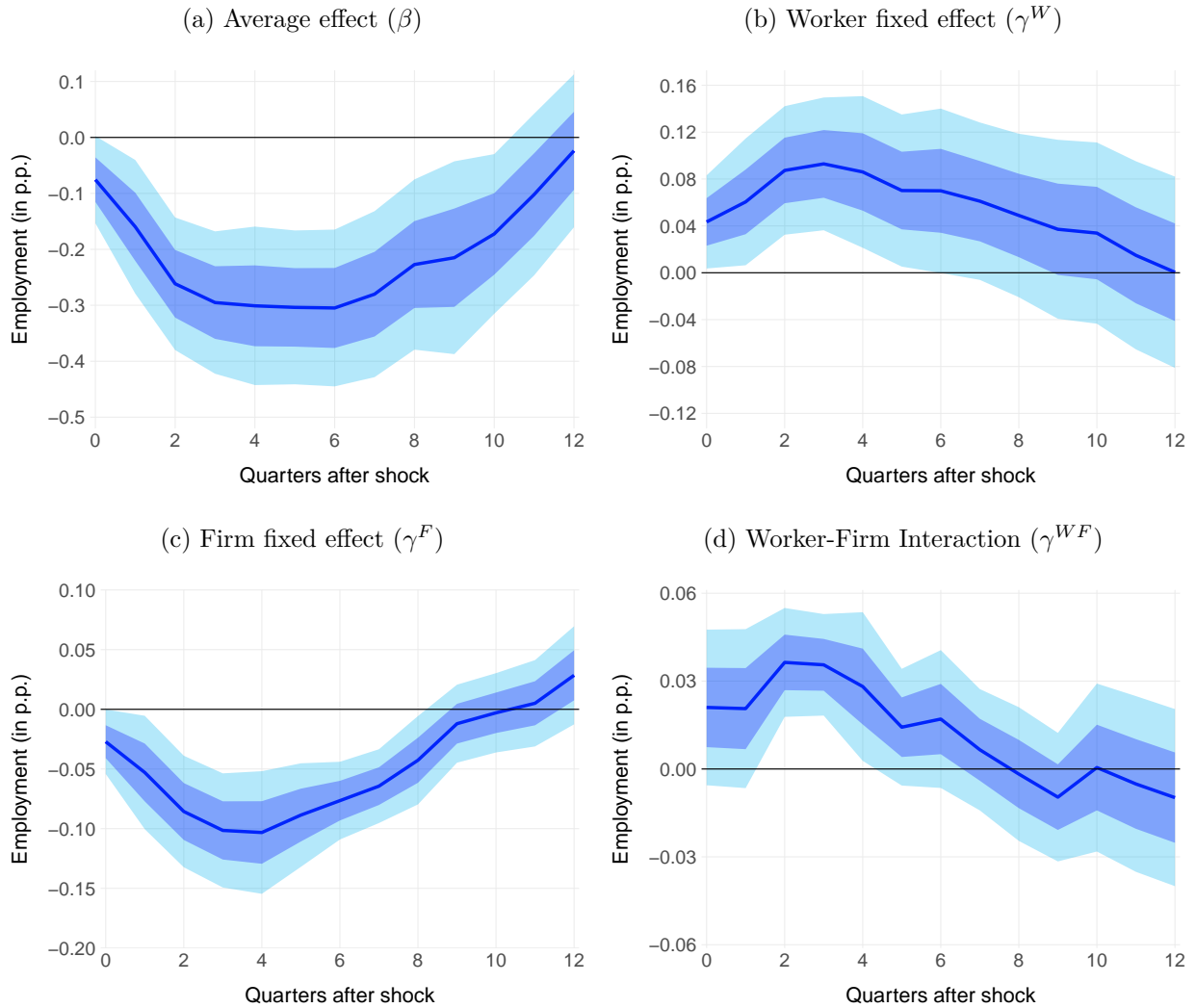
Note: The solid line in Panel (a) shows coefficients β^h in equation (3.1) when ε_t are sign-restricted surprises in the 3-month OIS rate. The solid lines in panels (b)-(d) show the estimated γ coefficients in equation (3.2) when ε_t are sign-restricted surprises in the 3-month OIS rate. The coefficients are standardized to correspond to a one standard deviation increase in ε_t^{MP} and a one standard deviation increase in firm and worker fixed effects. The inner and outer shaded areas respectively indicate 68% and 95% confidence bands two-way clustered by worker and quarter.

Figure A.7: Robustness: Macro controls



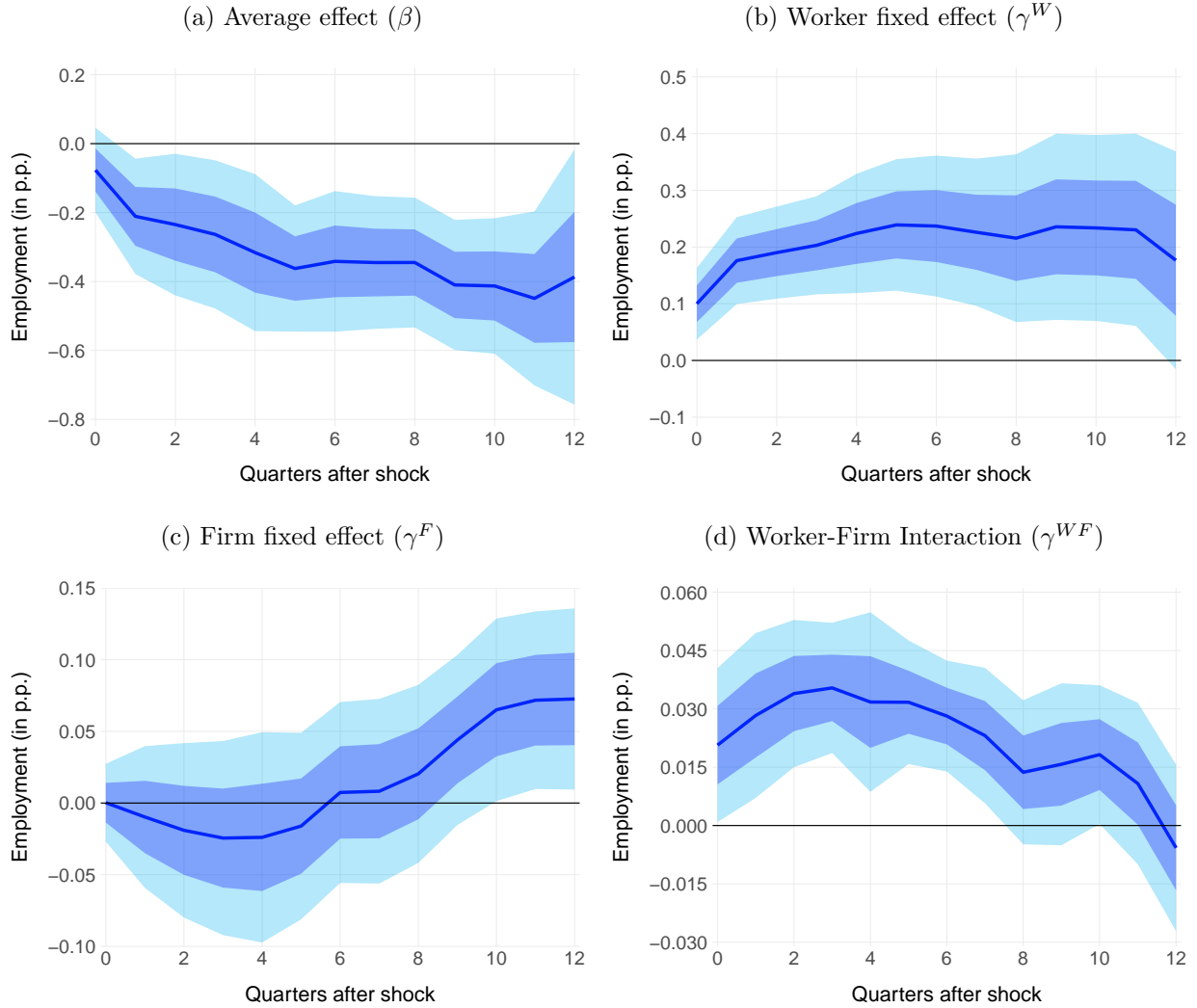
Note: The solid line in Panel (a) shows coefficients β^h in equation (3.1) when we add to $Z_{i,t-1}$ lagged monetary policy shock, GDP, employment rate and inflation. The solid lines in panels (b)-(d) show the estimated γ coefficients in equation (3.2) when we add to $Z_{i,t-1}$ lagged monetary policy shock, GDP, employment rate and inflation. The coefficients are standardized to correspond to a one standard deviation increase in ε_t^{MP} and a one standard deviation increase in firm and worker fixed effects. The inner and outer shaded areas respectively indicate 68% and 95% confidence bands two-way clustered by worker and quarter.

Figure A.8: Employment response for pre-ZLB period



Note: The solid line in Panel (a) shows coefficients β^h in equation (3.1) for observations until 2012Q2. The solid lines in panels (b)-(d) show the estimated γ coefficients in equation (3.2) for observations until 2012Q2. The coefficients are standardized to correspond to a one standard deviation increase in ε_t^{MP} and a one standard deviation increase in firm and worker fixed effects. The inner and outer shaded areas respectively indicate 68% and 95% confidence bands two-way clustered by worker and quarter.

Figure A.9: Employment response when filling missing observations



Note: The solid line in Panel (a) shows coefficients β^h in equation (3.1) when we fill missing observations as non-employed. The solid lines in panels (b)-(d) show the estimated γ coefficients in equation (3.2) when we fill missing observations as non-employed. The coefficients are standardized to correspond to a one standard deviation increase in ε_t^{MP} and a one standard deviation increase in firm and worker fixed effects. The inner and outer shaded areas respectively indicate 68% and 95% confidence bands two-way clustered by worker and quarter.